

# SURVEY & REMONUMENTATION

APR 27 1995

## COMMISSION

### KENT COUNTY REMONUMENTATION

#### LAND CORNER RECORDATION CERTIFICATE Filing Requirement of Act 74, Mich. P.A. 1970

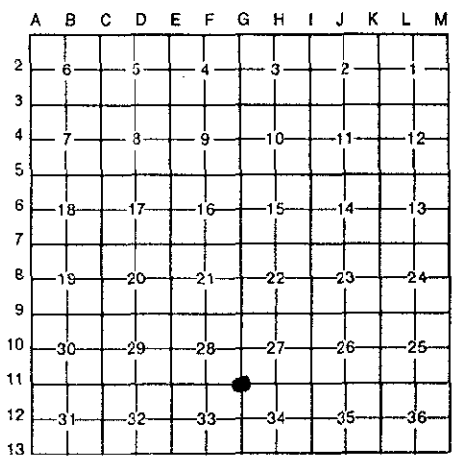
STATE OF MICHIGAN  
COUNTY OF KENT  
RECEIVED FOR RECORD  
9 1/2 DEC -5 AM 8:58

*Lucy J. Bond*  
REG. OF DEEDS

7662

Register of Deeds Stamp & File Number

|   |                          |               |  |
|---|--------------------------|---------------|--|
| For corners in<br><u>KENT COUNTY</u><br><small>(County)</small> | Located In:              | Corner Code # |  |
| 1. Public Land Survey   | T <u>6N</u> R <u>11W</u> | <u>G-11</u>   |  |
|   | T _____ R _____          | _____         |  |
|   | T _____ R _____          | _____         |  |
|   | T _____ R _____          | _____         |  |
| 2. Property Controlling<br>in Section                           | S _____ T _____ R _____  | _____         |  |
|   | S _____ T _____ R _____  | _____         |  |
| 3. Miscellaneous<br>Property in Sec.                            | S _____ T _____ R _____  | _____         |  |
|   | S _____ T _____ R _____  | _____         |  |
| 4. Lot No. _____, Recorded Plat _____                           |                          |               |  |
| 5. Private Claims _____   |                          |               |  |



I, William R. Byl, in a field survey on Sept. 13, 19 94, do hereby certify that under requirements of P.A. 74, Michigan P.A. of 1970, the corner points mentioned in lines 1 and 2 above were in conformance with regulations and rules therefore as required in the current manual of survey instructions of the United States Department of the Interior, Bureau of Land Management or by a decree of a Court of Law and/or that the corner points mentioned in lines 3, 4 and 5 above were in conformance with the rules of the Michigan Board of Land Surveyors or by a Decree of a Court of Law; established, re-established, monumented, re-monumented, recovered, found as expressed below:

**NOTE: Not more than 4 corners, all in the same town and range, may be recorded on this certificate.**

**A. Description of original monument and accessories and/or subsequent restoration:**

|      |      |               |           |                          |                               |
|------|------|---------------|-----------|--------------------------|-------------------------------|
| G-11 | 1831 | GLO           | Mullett   | Set Post                 | P.A. 345 1990 KENT COUNTY     |
|      | 1949 | Kent Co. Wit. |           | 1" Iron top of stone     | PEER APPROVED 12/11/94        |
|      | 1971 | LCRC #51      | Chambers  | 1 1/2" Iron              | CHAIRMAN <i>Harry Thubert</i> |
|      | 1974 | LCRC #648     | VanKooten | Iron in mon. box         |                               |
|      | 1982 | LCRC #3075    | Jonker    | Set Kent County Monument |                               |
|      | 1990 | LCRC #5730    | Bueche    | Kent County Monument     |                               |
|      | 1992 | LCRC #6539    | Bueche    | Kent County Monument     |                               |

The position of this corner was previously approved by the Kent County Remonumentation Peer Group, monumented by Robert J. Jonker on 8/3/82 and was recorded per LCRC #3075

**B. Description of corner evidence found and/or method applied in restoring or reestablishing corner:**

G-11 Found standard Kent Co. Mon. (Harrison) per witnesses from above LCRC as set by Robert J. Jonker in place of the 1 1/2" x 30" Iron he found. Said Iron checks with LCRC #51. LCRC #648 is incorrectly filed (for G-11 T5N, R11W).

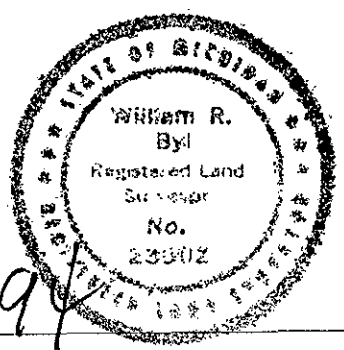
|                               |  |               |
|-------------------------------|--|---------------|
| <u>LCRC #3075</u>             | <u>LCRC #6539</u>                            |               |
| SE cor. hse. fdn. N40°W 93.0' | "X" on S. end culvert                        | S75°W 96.36'  |
| Plat monument North 50.1'     | Nail & KC Remon. tag E. side PP              | N55°W 85.87'  |
| C/L hydrant N80°E 132.84'     | Nail & KC Remon. tag E. side PP              | N20°E 87.08'  |
| "X" S. end culv. S75°W 97.2'  | "X" on S. sd. metal base for signal          | S70°W 159.92' |
| C/L E-W pvt. is 2' N. m/l     | On C/L bit. E-W; C/L bit. N-S is W. 200' m/l |               |

The selected location is accepted by me and is generally accepted by professional surveyors as the best available evidence of the position of the original corner.

**C. Description of monument for corner and accessories established to perpetuate locating the position of the corner:**

G-11 Standard Kent County Monument

|  |       |        |
|--|-------|--------|
| Nail & KC Remon. tag E. side P. Pole         | N55°W | 85.79' |
| Nail & KC Remon. tag E. side P. Pole         | N20°E | 87.12' |
| S. face chain link fence post                | N00°W | 50.87' |
| SE corner CB header                          | S80°W | 96.84' |
| SW corner CB header                          | S70°E | 99.62' |
| Back of walk                                 | S00°E | 49.06' |
| On C/L bit. E-W; C/L bit. N-S is W. 200' m/l |       |        |



Signed by *William R. Byl*  
Surveyor's Michigan License No. 23502

Date 11/27/94