

\$7.00 SEP 18 1995  
\$2.00 COMMISSION

KENT COUNTY REMONUMENTATION

LAND CORNER RECORDATION CERTIFICATE  
Filing Requirement of Act 74, Mich. P.A. 1970

STATE OF MICHIGAN  
COUNTY OF KENT  
RECEIVED FOR RECORD  
95 MAY 12 AM 10:43

*Tim J. Bond*  
REG. OF DEEDS

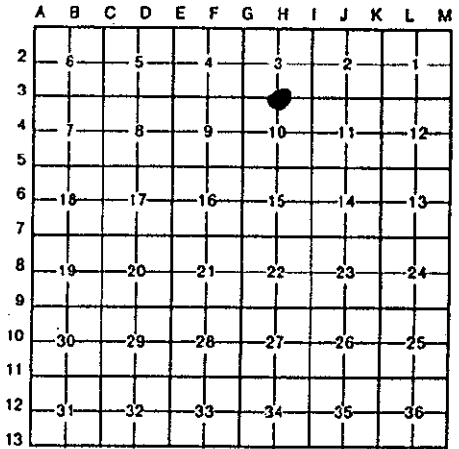
8352

Register of Deeds Stamp & File Number

For corners in  
KENT COUNTY  
(County)

Located In: Corner Code #

- 1. Public Land Survey T 6N R 11W H-3
- 2. Property Controlling in Section S T R
- 3. Miscellaneous Property in Sec. S T R
- 4. Lot No. \_\_\_\_\_ Recorded Plat \_\_\_\_\_
- 5. Private Claims \_\_\_\_\_



I, Kirk Breitels, in a field survey on March 23, 19 95, do hereby certify that under requirements of P.A. 74, Michigan P.A. of 1970, the corner points mentioned in lines 1 and 2 above were in conformance with regulations and rules therefore as required in the current manual of survey instructions of the United States Department of the Interior, Bureau of Land Management or by a decree of a Court of Law and/or that the corner points mentioned in lines 3, 4 and 5 above were in conformance with the rules of the Michigan Board of Land Surveyors or by a Decree of a Court of Law; established, re-established, monumented, re-monumented, recovered, found as expressed below:

NOTE: Not more than 4 corners, all in the same town and range, may be recorded on this certificate.

A. Description of original monument and accessories and/or subsequent restoration:

H-3	1831	GLO	Mullett	Set Post
	1951	Kent Co. Wit.		Boat Spike
	1973	LCRC #578	Spicer	Boat Spike & Tag
	1981	LCRC #2038	Hackbardt	Set Kent Co. Mon.
	1990		Chettleburgh	Set PK Nail (Rd. const. 1987)

The position of this corner was previously approved by the Kent County Remonumentation Peer Group, monumented by Glen S. Hackbardt on 7/14/81 and was recorded per LCRC #2038.

B. Description of corner evidence found and/or method applied in restoring or reestablishing corner:

H-3 Found PK Nail as set by Thomas Chettleburgh (from 1986 Byl witness information prior to road const.) in the same position as set in 1981 by Glen S. Hackbardt in place of the Conc. Nail with Williams & Works tag he found. Said Conc. Nail & tag fit Kent Co. Wit. and LCRC #578.

LCRC#2038

SW cor. CB header	S50°E	43.96'
C/L Manhole	S20°E	13.70'
C/L Manhole	N30°W	36.11'
C/L Manhole	N20°E	9.39'
NW cor. CB header	N60°E	48.79'

P.A. 345 1990 KENT COUNTY

PEER APPROVED 3/30/95

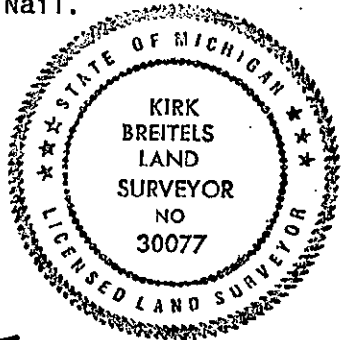
CHAIRMAN *[Signature]*

The selected position is accepted by me and is generally accepted by professional surveyors as the best available evidence of the original corner.

C. Description of monument for corner and accessories established to perpetuate locating the position of the corner:

H-3 Set Standard Kent County Monument (Harrison) in place of the PK Nail.

SW cor. CB header	S50°E	43.74'
C/L Manhole	S20°E	13.76'
C/L Water Valve	N30°W	35.92'
C/L Manhole	N20°E	9.31'
NW cor. CB header	N60°E	48.84'
Nail & KC Remon. tag W. side P. Pole	N25°E	43.67'
Nail & KC Remon. tag W. side Guy Pole	N25°W	93.28'
Nail & KC Remon. tag W. side P. Pole	S50°W	38.02'



Signed by *Kirk Breitels*

Date 3/30/95

Surveyor's Michigan License No. 30077