

SURVEY & REMONUMENTATION

APR 27 1995

KENT COUNTY REMONUMENTATION

COMMISSION

LAND CORNER RECORDATION CERTIFICATE
Filing Requirement of Act 74, Mich. P.A. 1970

STATE OF MICHIGAN
COUNTY OF KENT
RECEIVED FOR RECORD
94 DEC -5 AM 8:58

Lucy J. Bond
REG. OF DEEDS

For corners in
KENT COUNTY
(County)

Located In:

Corner Code #

- | | | |
|------------------------------------|--------------------------|------------|
| 1. Public Land Survey | T <u>6N</u> R <u>11W</u> | <u>H-9</u> |
| | T _____ R _____ | _____ |
| | T _____ R _____ | _____ |
| | T _____ R _____ | _____ |
| 2. Property Controlling in Section | S _____ T _____ R _____ | _____ |
| | S _____ T _____ R _____ | _____ |
| 3. Miscellaneous Property in Sec. | S _____ T _____ R _____ | _____ |

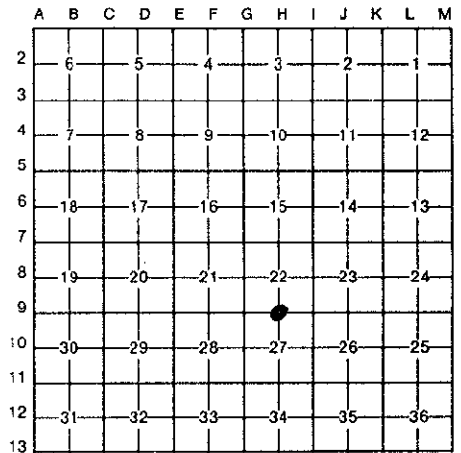
7668

Register of Deeds Stamp & File Number

4. Lot No. _____, Recorded Plat _____
5. Private Claims _____

I, William R. Byl, in a field survey on Sept. 6, 19 94, do hereby certify that under requirements of P.A. 74, Michigan P.A. of 1970, the corner points mentioned in lines 1 and 2 above were in conformance with regulations and rules therefore as required in the current manual of survey instructions of the United States Department of the Interior, Bureau of Land Management or by a decree of a Court of Law and/or that the corner points mentioned in lines 3, 4 and 5 above were in conformance with the rules of the Michigan Board of Surveyors or by a Decree of a Court of Law; established, re-established, monumented, re-monumented, recovered, found as expressed below:

NOTE: Not more than 4 corners, all in the same town and range, may be recorded on this certificate.



A. Description of original monument and accessories and/or subsequent restoration:

H-9	1831	GLO	Mullett	Set Post
		Kent Co. Wit.		Mon. Box
	1972	LCRC #131	Chambers	1" Iron in mon. box
	1981	LCRC #2036	Hackbardt	Set Kent County Monument in mon. box
	1982	LCRC #3188	Wickham	Reset Kent County Monument in mon. box after road construction

P.A. 345 1900 KENT COUNTY

PEER APPROVED 12/1/94
CHAIRMAN *Harry J. Pulver*

The position of this corner was previously approved by the Kent County Remonumentation Peer Group, monumented by Glen S. Hackbardt on 7/24/81 and was recorded per LCRC #2036

B. Description of corner evidence found and/or method applied in restoring or reestablishing corner:

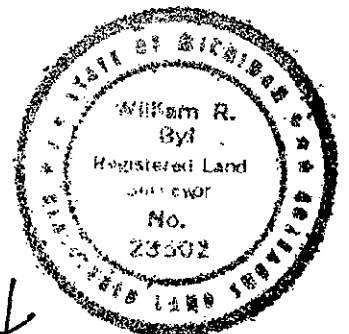
H-9 Found standard Kent Co. Mon. (Harrison) per witnesses from above LCRC as set by Burt Wickham Jr. at the same location as set in 1981 by Glen S. Hackbardt in place of the 1" Iron he found inside a mon. box. Said checks with Kent Co. Wit. & LCRC #131.

<u>LCRC #2036</u>	<u>LCRC #3188</u>
C/L hydrant S70°E 71.00'	N68°E to Nail & tag CP Guy Pole 87.18'
C/L manhole S30°W 17.40'	S43°E to Nail & tag CP Pole 72.55'
C/L manhole S45°W 33.34'	S28°W to "X" in S. end SW curb radius 73.13'
C/L hydrant N80°W 98.60'	N00°E to Nail & tag 9" Chinese Elm 116.86'

The selected location is accepted by me and is generally accepted by professional surveyors as the best available evidence of the position of the original corner.

C. Description of monument for corner and accessories established to perpetuate locating the position of the corner:

H-9 Standard Kent County Monument in mon. box		
Nail & KC Remon. tag NW side Guy Pole	N68°E	87.18'
New Nail & KC Remon. tag NE side CP Pole	S55°E	72.62'
"X" in S. end SW curb radius	S28°W	73.15'
C/L top of hydrant	N55°W	110.26'
Set Nail & KC Remon. tag SE side Guy Pole	S40°W	62.60'



Signed by *William R. Byl*
Surveyor's Michigan License No. 23502

Date 112794