

SURVEY & REMONUMENTATION

APR 27 1995

KENT COUNTY REMONUMENTATION

COMMISSION

LAND CORNER RECORDATION CERTIFICATE
Filing Requirement of Act 74, Mich. P.A. 1970

STATE OF MICHIGAN
COUNTY OF KENT
RECEIVED FOR RECORD
94 DEC -5 AM 8:58

For corners in
KENT COUNTY

(County)	Located In:	Corner Code #
1. Public Land Survey	T <u>6N</u> R <u>11W</u>	<u>I-2</u>
	T _____ R _____	_____
	T _____ R _____	_____
	T _____ R _____	_____
2. Property Controlling in Section	S _____ T _____ R _____	_____
	S _____ T _____ R _____	_____
3. Miscellaneous Property in Sec.	S _____ T _____ R _____	_____
	S _____ T _____ R _____	_____

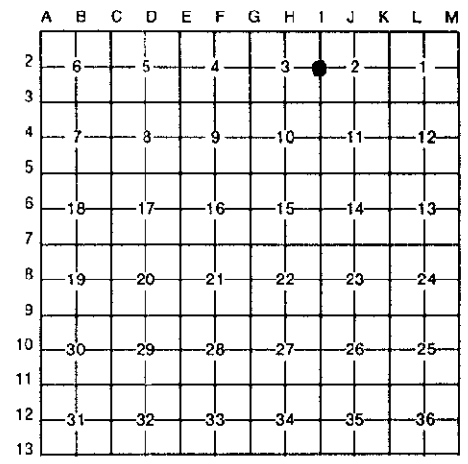
W. R. Byl
REG. OF DEEDS

7672

Register of Deeds Stamp & File Number

- 4. Lot No. _____, Recorded Plat _____
- 5. Private Claims _____

I, William R. Byl, in a field survey on July 7, 19 94, do hereby certify that requirements of P.A. 74, Michigan P.A. of 1970, the corner points mentioned in lines 1 and 2 above were in conformance with regulations and rules therefore as required in the current manual of survey instructions of the United States Department of the Interior, Bureau of Land Management or by a decree of a Court of Law and/or that the corner points mentioned in lines 3, 4 and 5 above of Law; established, re-established, monumented, re-monumented, recovered, found as expressed below:



NOTE: Not more than 4 corners, all in the same town and range, may be recorded on this certificate.

A. Description of original monument and accessories and/or subsequent restoration:

I-2	1831	GLO	Mullett	Set Post	P.A. 345 1800 KENT COUNTY
		Kent Co. Wit.		Iron	PEER APPROVED <u>12/1/94</u>
	1972	LCRC #299	N.C. Jones	1/2" ID Iron	CHAIRMAN <i>Harry Huber</i>
	1980	LCRC #1433	Merdzinski	Set Kent County Monument	
	1989	LCRC #4946	Bueche	Kent County Monument	

The position of this corner was previously approved by the Kent County Remonumentation Peer Group, monumented by John A. Merdzinski on 10/20/80 and was recorded per LCRC #1433

B. Description of corner evidence found and/or method applied in restoring or reestablishing corner:

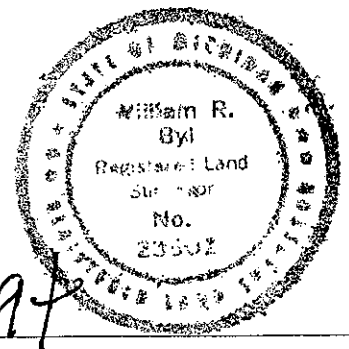
I-2 Found standard Kent Co. Mon. (Harrison) per witnesses from above LCRC as set by John A. Merdzinski in place of the 1/2" Iron Pipe he found. Said Iron Pipe checks with Kent Co. Wit. and LCRC #299.

LCRC #1433	LCRC #4946
N85°W Nail & tag Lt. Pole 45.51'	Nail & tag N. side Lt. Pole N85°W 45.51'
S60°W Nail & tag 6" Pine 42.15'	Nail & tag N. side 10" Pine S60°W 42.15'
South Nail & tag 10" Maple 45.00'	Nail & tag W. side 14" Maple S00°W 45.00'
S50°E Nail & tag 28" Basswood 22.50'	Nail & tag N. side 30" Basswood S50°E 22.50'
S80°E Nail & tag 10" Basswood 44.62'	Nail & tag N. side 14" Basswood S80°E 44.62'
S50°W Back cor. C&G @ NE cor. pkg. lot 62.55'	Back cor. conc. C&G, NE cor. pkg. lot S50°W 62.55'
Mon. on N. side 28" dead Ash	On N. side dead 28" Ash

The selected location is accepted by me and is generally accepted by professional surveyors as the best available evidence of the position of the original corner.

C. Description of monument for corner and accessories established to perpetuate locating the position of the corner:

I-2 Standard Kent County Monument	
Nail & KC Remon. tag N. side Lt. Pole	N85°W 45.48'
New Nail & KC Remon. tag N. side 10" Pine	S60°W 42.29'
New Nail & KC Remon. tag W. side 14" Maple	S00°W 45.11'
New Nail & KC Remon. tag N. side 30" Basswood	S50°E 22.46'
New Nail & KC Remon. tag N. side 14" Basswood	S80°E 44.55'
Back cor. conc. C&G, NE cor. pkg. lot	S50°W 62.60'
On N. side 28" dead Ash	



Signed by *W. R. Byl*
Surveyor's Michigan License No. 23502

Date 11/27/94