

**SURVEY & REMONUMENTATION**

APR 27 1995

COMMISSION

KENT COUNTY REMONUMENTATION

LAND CORNER RECORDATION CERTIFICATE  
Filing Requirement of Act 74, Mich. P.A. 1970

STATE OF MICHIGAN  
COUNTY OF KENT  
RECEIVED FOR RECORD

9/4 DEC -5 AM 8:58

*Levi J. Bond*  
REG. OF DEEDS

For corners in  
**KENT COUNTY**  
(County)

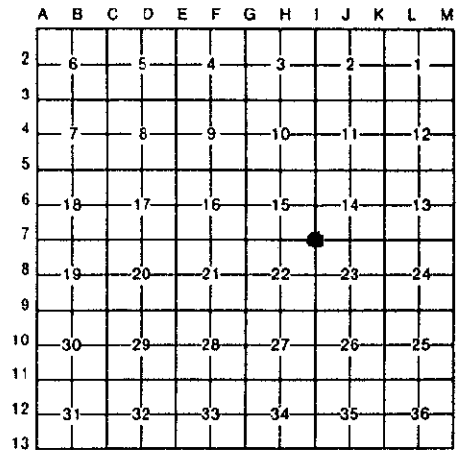
	Located In:	Corner Code -#
1. Public Land Survey	T <u>6N</u> R <u>11W</u>	<u>I-7</u>
	T _____ R _____	_____
	T _____ R _____	_____
	T _____ R _____	_____
2. Property Controlling in Section	S _____ T _____ R _____	_____
	S _____ T _____ R _____	_____
3. Miscellaneous Property in Sec.	S _____ T _____ R _____	_____
	S _____ T _____ R _____	_____

**7677**

Register of Deeds Stamp & File Number

4. Lot No. \_\_\_\_\_, Recorded Plat \_\_\_\_\_  
5. Private Claims \_\_\_\_\_

I, William R. Byl, in a field survey on Sept. 20, 19 94, do hereby certify that under requirements of P.A. 74, Michigan P.A. of 1970, the corner points mentioned in lines 1 and 2 above were in conformance with regulations and rules therefore as required in the current manual of survey instructions of the United States Department of the Interior, Bureau of Land Management or by a decree of a Court of Law and/or that the corner points mentioned in lines 3, 4 and 5 above were in conformance with the rules of the Michigan Board of Land Surveyors or by a Decree of a Court of Law; established, re-established, monumented, re-monumented, recovered, found as expressed below:



**NOTE: Not more than 4 corners, all in the same town and range, may be recorded on this certificate.**

A. Description of original monument and accessories and/or subsequent restoration:

I-7	1831	GLO	Mullett	Set Post
		Kent Co. Wit.		Iron & Stone
	1972	LCRC #324	Spicer	Boat Spike
	1980	LCRC #1441	Merdzinski	Set Kent County Monument
	1989	LCRC #4951	Bueche	Kent County Monument
	1993	LCRC #6753	Roon	Kent County Monument

P.A. 345 1990 KENT COUNTY  
PEER APPROVED 12/1/94  
CHAIRMAN *John A. Merdzinski*

The position of this corner was previously approved by the Kent County Remonumentation Peer Group, monumented by John A. Merdzinski on 10/22/80 and was recorded per LCRC #1441

B. Description of corner evidence found and/or method applied in restoring or reestablishing corner:

I-7 Found standard Kent Co. Mon. (Harrison) per witnesses from above LCRC as set by John A. Merdzinski in place of the Boat Spike over a 1" Iron over a Stone he found. Said Boat Spike, Iron, Stone all check with Kent Co. Wit. and LCRC #324.

	LCRC #1441	LCRC #6753
Top C/L hydr.	S60°E 66.40'	Nail in P. Pole N40°E 73.20'
Nail & tag 10" Elm	S20°W 129.52'	Nail in P. Pole S25°E 81.52'
Nail & tag 10" Elm	N85°W 105.76'	SW cor. CB rim N20°W 62.92'
Nail & tag 10" Elm	N20°W 81.32'	Top C/L hydrant S55°E 67.27'
"X" cut N. end culv.	S35°E 38.65'	
"X" cut S. end culv.	N40°E 39.97'	
SE cor. Elec. box	N75°W 48.91'	

The selected location is accepted by me and is generally accepted by professional surveyors as the best available evidence of the position of the original corner.

C. Description of monument for corner and accessories established to perpetuate locating the position of the corner:

I-7 Standard Kent County Monument			
Nail & MDSH tag in NW side Lt. Pole	N40°E	73.15'	
Nail & MDSH tag in NE side Lt. Pole	S25°E	81.50'	
SW cor. CB header	N20°W	62.97'	
Top C/L hydrant	S55°E	67.22'	
C/L manhole	N00°E	9.14'	
C/L manhole	S40°W	38.75'	



Signed by *William R. Byl*  
Surveyor's Michigan License No. 23502

Date 11/27/94