

~~\$7.00~~ P 18 1995
\$2.00 COMMISSION

KENT COUNTY REMONUMENTATION

LAND CORNER RECORDATION CERTIFICATE
Filing Requirement of Act 74, Mich. P.A. 1970

MAY 12 AM 10:43

For corners in
KENT COUNTY
(County)

Located In:	Corner Code #
T 6N R 11W	I-8
T _____ R _____	_____
T _____ R _____	_____
T _____ R _____	_____
T _____ R _____	_____
S _____ T _____ R _____	_____
S _____ T _____ R _____	_____
S _____ T _____ R _____	_____
S _____ T _____ R _____	_____

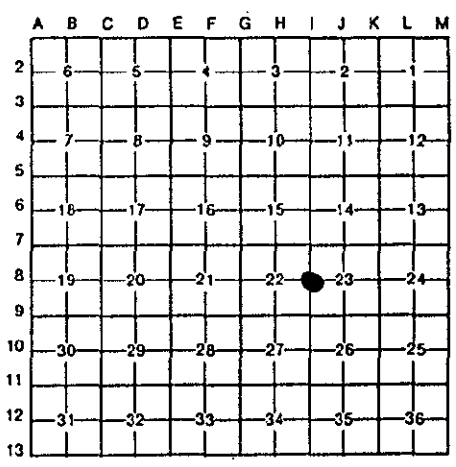
W. J. Bond
REG. OF DEEDS

8353

Register of Deeds Stamp & File Number

4. Lot No. _____, Recorded Plat _____
5. Private Claims _____

I, Kirk Breitels, in a field survey on March 23, 19 95, do hereby certify that under requirements of P.A. 74, Michigan P.A. of 1970, the corner points mentioned in lines 1 and 2 above were in conformance with regulations and rules therefore as required in the current manual of survey instructions of the United States Department of the Interior, Bureau of Land Management or by a decree of a Court of Law and/or that the corner points mentioned in lines 3, 4 and 5 above were in conformance with the rules of the Michigan Board of Land Surveyors or by a Decree of a Court of Law; established, re-established, monumented, re-monumented, recovered, found as expressed below:



NOTE: Not more than 4 corners, all in the same town and range, may be recorded on this certificate.

A. Description of original monument and accessories and/or subsequent restoration:

Date	Surveyor	Monument	Accessories
I-8 1831	GLO	Mullett	Set Post
1964	Kent Co. Wit.		Iron
1972	LCRC #324	Spicer	Boat Spike
1981	LCRC #2037	Hackbardt	Set Kent Co. Mon.
1989	LCRC #4952	Beuche	Kent Co. Mon.
1993	LCRC #6764	Roon	Kent Co. Mon.

P.A. 345 1990 KENT COUNTY
PEER APPROVED 3/30/95
CHAIRMAN *Gary Hubert*

The position of this corner was previously approved by the Kent County Remonumentation Peer Group, monumented by Glen S. Hackbardt on 7/21/81 and was recorded per LCRC #2037

B. Description of corner evidence found and/or method applied in restoring or reestablishing corner:

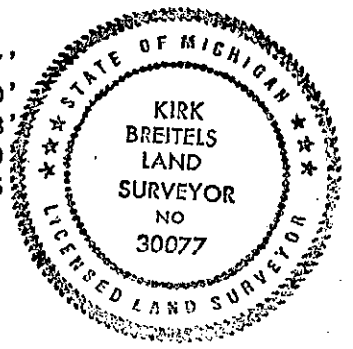
I-8 Found standard Kent Co. Mon. (Harrison) per witnesses from above LCRC as set by Glen S. Hackbardt in place of the 1/2" x 18" iron over a 3/4" x 18" crimped iron that he found. Said Irons check with Kent Co. Wit. and LCRC #324.

LCRC #2037	LCRC #4952 & #6764
Nail & tag 18" Ash East 105.77'	Nail & tag 22" Ash East 105.77'
Nail & tag 10" Ash S35°W 48.61'	Nail & tag 18" dbl. Sycamore N15°W 68.00'
Nail & tag 14" dbl. Sycamore N15°W 68.00'	Nail & tag 14" Ash S35°W 48.55'
Nail & tag 4" Elm N30°E 81.18'	Nail & tag 10" dbl. Elm N20°E 81.05'
C/L pavement - East 2.4'	Nail & tag 10" dbl. Elm N40°E 36.96'

The selected position is accepted by me and is generally accepted by professional surveyors as the best available evidence of the original corner.

C. Description of monument for corner and accessories established to perpetuate locating the position of the corner:

Monument	Direction	Distance
I-8 Standard Kent County Monument		
New Nail & KC Remon. tag N. side 26" Ash	N90°E	105.77'
New Nail & KC Remon. tag W. side 18" dbl. Sycamore	N15°W	67.70'
New Nail & KC Remon. tag SE side 18" Ash	S35°W	48.58'
Nail & KC Remon. tag W. side 10" dbl. Elm stump	N20°E	81.10'
New Nail & KC Remon. tag N. side 12" dbl. Elm	N40°E	36.65'
C/L pavement - East 2' m/l		



Signed by *Kirk Breitels*

Date 3/30/95

Surveyor's Michigan License No. 30077