

SURVEY & REMONUMENTATION

APR 27 1995

KENT COUNTY REMONUMENTATION

STATE OF MICHIGAN
COUNTY OF KENT
RECEIVED FOR RECORD

LAND CORNER RECORDATION CERTIFICATE
Filing Requirement of Act 74, Mich. P.A. 1970

94 DEC -5 AM 9:00

COMMISSION

For corners in
KENT COUNTY
(County)

Located In: Corner Code #

1. Public Land Survey	T <u>6N</u> R <u>11W</u>	<u>K-7</u>
	T _____ R _____	_____
	T _____ R _____	_____
	T _____ R _____	_____
2. Property Controlling in Section	S _____ T _____ R _____	_____
	S _____ T _____ R _____	_____
3. Miscellaneous Property in Sec.	S _____ T _____ R _____	_____
	S _____ T _____ R _____	_____

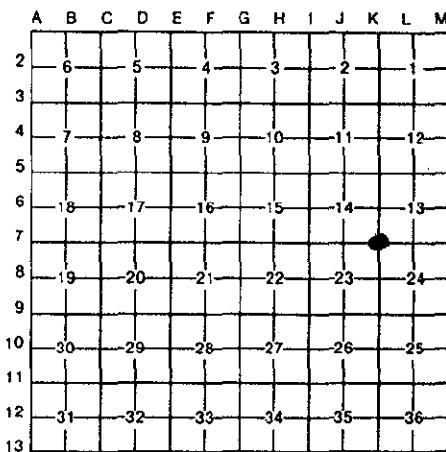
W. R. Byl
REG. OF DEEDS

7696

Register of Deeds Stamp & File Number

4. Lot No. _____, Recorded Plat _____
5. Private Claims _____

I, William R. Byl, in a field survey on Sept. 20, 19 94, do hereby certify that under requirements of P.A. 74, Michigan P.A. of 1970, the corner points mentioned in lines 1 and 2 above were in conformance with regulations and rules therefore as required in the current manual of survey instructions of the United States Department of the Interior, Bureau of Land Management or by a decree of a Court of Law and/or that the corner points mentioned in lines 3, 4 and 5 above were in conformance with the rules of the Michigan Board of Land Surveyors or by a Decree of a Court of Law; established, re-established, monumented, re-monumented, recovered, found as expressed below:



NOTE: Not more than 4 corners, all in the same town and range, may be recorded on this certificate.

A. Description of original monument and accessories and/or subsequent restoration:

K-7	1831	GLO	Mullett	Set Post
	1964	Kent Co. Wit.		Iron in mon. box
	1973	LCRC #589	Spicer	1/2" Iron
	1981	LCRC #2028	Hackbardt	Set Kent County Monument in mon. box
	1989	LCRC #4968	Bueche	Kent County Monument in mon. box
	1993	LCRC #6754	Roon	Kent County Monument

P.A. 345 1990 KENT COUNTY

PEER APPROVED 12/1/94
CHAIRMAN *Harry Huber*

The position of this corner was previously approved by the Kent County Remonumentation Peer Group, monumented by Glen S. Hackbardt on 6/10/81 and was recorded per LCRC #2028

B. Description of corner evidence found and/or method applied in restoring or reestablishing corner:

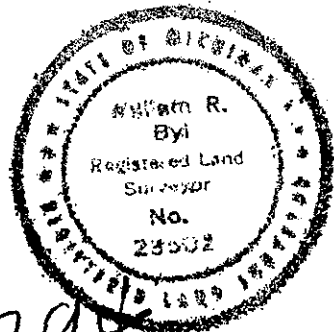
K-7 Found standard Kent Co. Mon. (Harrison) in mon. box per witnesses from above LCRC as set by Glen S. Hackbardt in place of the 1 1/2" x 24" Iron he found inside a mon. box. Said Iron in mon. box checks with Kent Co. Wit. and LCRC #589.

LCRC #2028		LCRC #4968 & #6754	
C/L manhole	S20°W 52.28'	Face of 8" gas vent	S40°W 80.40'
Face 8" gas vent	S40°E 80.40'	"X" cut in conc. curb	N50°E 43.97'
C/L S'ly manhole	N80°E 50.88'	Nail & tag E. side Guy Pole	N45°W 47.75'
C/L manhole	N25°W 51.73'	Nail & tag E. side P. Pole	S40°W 61.83'
		Nail P. Pole	N15°E 112.50'
		Nail P. Pole	S45°E 55.00'

The selected location is accepted by me and is generally accepted by professional surveyors as the best available evidence of the position of the original corner.

C. Description of monument for corner and accessories established to perpetuate locating the position of the corner:

K-7 Standard Kent County Monument in mon. box	
Face of 8" gas vent	S40°W 80.44'
"X" cut in conc. curb	N50°E 44.01'
Nail & KC Remon. tag E. side Guy Pole	N45°W 47.75'
Nail & KC Remon. tag E. side P. Pole	S40°W 61.86'
Nail & MDSH tag P. Pole	N15°E 112.36'
Set Nail & KC Remon. tag NE side P. Pole	S45°E 55.00'
C/l top of hydrant	N10°W 153.36'



Signed by *W. R. Byl*
Surveyor's Michigan License No. 23502

Date 11/27/94