

SURVEY & REMONUMENTATION

Kent County Remonumentation

STATE OF MICHIGAN
COUNTY OF KENT
RECEIVED FOR RECORD

APR 28 1995

LAND CORNER RECORDATION CERTIFICATE 94 NOV 29 AM 9:18
Filing Requirement of Act 74, Mich. P.A. 1970

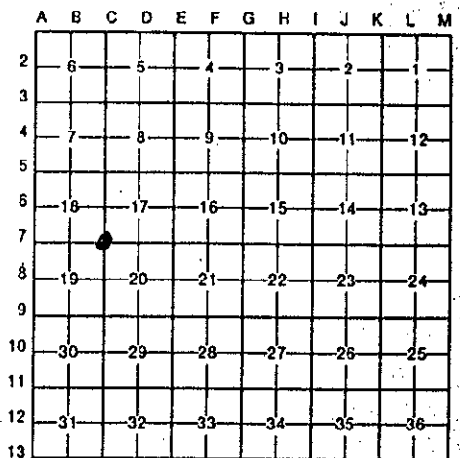
Tim J. Bond
REG. OF DEEDS

For corners in **COMMISSION**

Kent (County)	Located In:	Corner Code #
1. Public Land Survey	T <u>6N</u> R <u>12W</u>	<u>C-7</u>
	T _____ R _____	_____
	T _____ R _____	_____
	T _____ R _____	_____
2. Property Controlling in Section	S _____ T _____ R _____	_____
	S _____ T _____ R _____	_____
3. Miscellaneous Property in Sec.	S _____ T _____ R _____	_____
	S _____ T _____ R _____	_____

7410
Register of Deeds Stamp & File Number

4. Lot No. _____, Recorded Plat _____
5. Private Claims _____



I, Randy Kolehouse, in a field survey on March 29, 1994, do hereby certify that under requirements of P.A. 74, Michigan P.A. of 1970, the corner points mentioned in lines 1 and 2 above were in conformance with regulations and rules therefore as required in the current manual of survey instructions of the United States Department of the Interior, Bureau of Land Management or by a decree of a Court of Law and/or that the corner points mentioned in lines 3, 4 and 5 above were in conformance with the rules of the Michigan Board of Land Surveyors or by a Decree of a Court of Law; established, re-established, monumented, re-monumented, recovered, found as expressed below:

NOTE: Not more than 4 corners, all in the same town and range, may be recorded on this certificate.

A. Description of original monument and accessories and/or subsequent restoration:

C-7	1831	G.L.O. Notes	L. Lyon	Set Post
	1939	Survey Notes	William & Works	Iron
	N/A	Wit. Map	K.C. Surveyor	R.R. Spike
	1984	L.C.R.C. #3827	Exxel Engineering	Fnd. R.R. Spike/Set K.C. Mon.

This corner was originally approved by the Kent County Remonumentation Peer Group and monumented by Exxel Engineering, Inc., on 4/26/84 and was recorded per L.C.R.C. #3827.

B. Description of corner evidence found and/or method applied in restoring or reestablishing corner:

C-7 Found K.C. Monument in C/L Wilson Avenue running N-S per L.C.R.C. #3827 as set by Exxel Engineering in place of a R.R. spike they found by checking K.C. Surveyor's wit. map.

L.C.R.C. #4548

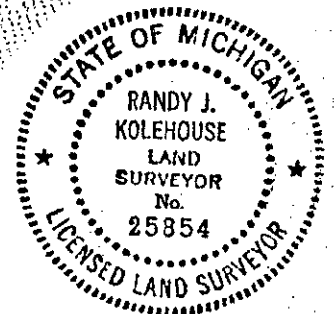
- C/L top of steel fence post (at E end fence) N 46° W 60.23'
- Nail & K.C. remon. tag in SW side p. pole N 62° W 30.82'
- NW cor. brick hse. N 86° E 85.08'
- Nail & K.C. remon. tag in NW side p. pole N 31° E 62.21'
- Nail & K.C. romon. tag in NE side 28" Cottonwood S 25° W 182.71'

The selected location is accepted by me and is generally accepted by professional surveyors as the best available evidence of the position of the original corner.

C. Description of monument for corner and accessories established to perpetuate locating the position of the corner:

- C-7 Standard Kent County Monument
- C/L top of steel fence post (at E end fence) N 46° W 60.23'
- Nail & K.C. remon. tag in SW side p. pole N 62° W 30.82'
- NW cor. brick hse. N 86° E 85.08'
- Nail & K.C. remon. tag in NW side p. pole N 31° E 62.21'
- Nail & K.C. remon. tag in NE side 28" Cottonwood S 25° W 182.71'

P.A. 345 1990 KENT COUNTY
PEER APPROVED 7/28/94
CHAIRMAN *Randy Kolehouse*



Signed by *Randy J. Kolehouse*
Surveyor's Michigan License No. 25854

Date 11/21/94