

SURVEY & REMONUMENTATION

APR 28 1995

Kent County Remonumentation

STATE OF MICHIGAN
COUNTY OF KENT
RECEIVED FOR RECORD

COMMISSION

LAND CORNER RECORDATION CERTIFICATE
Filing Requirement of Act 74, Mich. P.A. 1970

94 NOV 29 AM 9:18

Lucy J. Bond
REG. OF DEEDS

For corners in
Kent

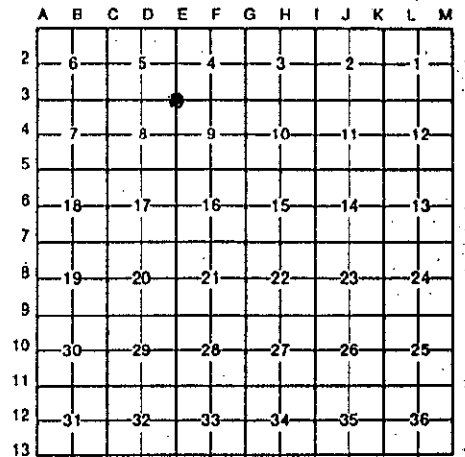
Located In: Corner Code #

(County)

- | | | |
|------------------------------------|------------|-----|
| 1. Public Land Survey | T 6N R 12W | E-3 |
| | T R | |
| | T R | |
| | T R | |
| 2. Property Controlling in Section | S T R | |
| | S T R | |
| 3. Miscellaneous Property in Sec. | S T R | |
| | S T R | |

7425
Register of Deeds Stamp & File Number

4. Lot No. _____, Recorded Plat _____
5. Private Claims _____



I, Randy Kolehouse, in a field survey on April 21, 19 94, do hereby certify that under requirements of P.A. 74, Michigan P.A. of 1970, the corner points mentioned in lines 1 and 2 above were in conformance with regulations and rules therefore as required in the current manual of survey instructions of the United States Department of the Interior, Bureau of Land Management or by a decree of a Court of Law and/or that the corner points mentioned in lines 3, 4 and 5 above were in conformance with the rules of the Michigan Board of Land Surveyors or by a Decree of a Court of Law; established, re-established, monumented, re-monumented, recovered, found as expressed below:

NOTE: Not more than 4 corners, all in the same town and range, may be recorded on this certificate.

A. Description of original monument and accessories and/or subsequent restoration:

E-3	1831	G.L.O. Notes	L. Lyon	Set Post
	1928	Survey Records	Williams & Works	Iron at Fence Corner
	1950	Survey Records	Williams & Works	1-1/2" Iron at Fence Corner
	1963	Wit. Map	K.C. Surveyor	1/2" Iron
	1979	L.C.R.C. #3876	Williams & Works	New 1-1/2" Iron
	1984	L.C.R.C. #3930	Rosema	Fnd. 1-1/2" Iron/Set K.C. Mon. Box

The position of this corner was previously approved by the Kent County Remonumentation Peer Group monumented by Maurice J. Rosema on 8/15/84 and was recorded per L.C.R.C. #3930.

B. Description of corner evidence found and/or method applied in restoring or reestablishing corner:

E-3 Found K.C. Monument per L.C.R.C. #3930 as set by Maurice Rosema in place of a 1-1/2" iron found which checked Williams & Works survey records of 1928 and 1950. Also checked L.C.R.C. #3876.

L.C.R.C. #3930

- Nail & remon. tag E side 10" Maple N 26° W 19.99'
- Nail & remon. tag NE side 15" Ash N 56° W 29.88'
- Nail & remon. tag NE side 15" Ash N 85° W 30.34'
- Nail & remon. tag N side 10" Ash S 56° W 12.89'
- Nail & remon. tag NW side p. pole N 47° E 28.66'

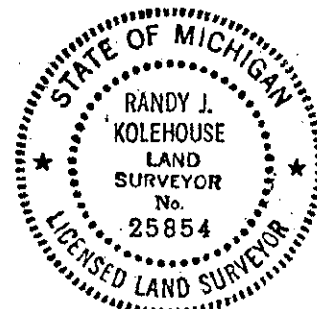
The selected location is accepted by me and is generally accepted by professional surveyors as the best available evidence of the position of the original corner.

C. Description of monument for corner and accessories established to perpetuate locating the position of the corner:

E-3 Standard Kent County Monument
Nail & K.C. remon. tag E side 10" Maple N 26° W 19.99'
Nail & remon. tag NE side 15" Ash N 56° W 29.88'
Nail & remon. tag NE side 15" Ash N 85° W 30.34'
Nail & remon. tag N side 10" Ash S 56° W 12.89'
Nail & remon. tag NW side p. pole N 47° E 28.66'

P.A. 345 1990 KENT COUNTY

PEER APPROVED 8/11/94
CHAIRMAN *[Signature]*



Signed by *Randy J. Kolehouse* Date 11/21/94
Surveyor's Michigan License No. 25854