

SURVEY & REMONUMENTATION

Kent County Remonumentation

STATE OF MICHIGAN
COUNTY OF KENT
RECEIVED FOR RECORD

APR 28 1995

LAND CORNER RECORDATION CERTIFICATE
Filing Requirement of Act 74, Mich. P.A. 1970

94 NOV 29 AM 9:19

COMMISSION

For corners in
Kent
(County)

Located In: Corner Code #

1. Public Land Survey	T6N R 12W	E-5
	T R	
	T R	
	T R	
2. Property Controlling in Section	S T R	
	S T R	
3. Miscellaneous Property in Sec.	S T R	
	S T R	

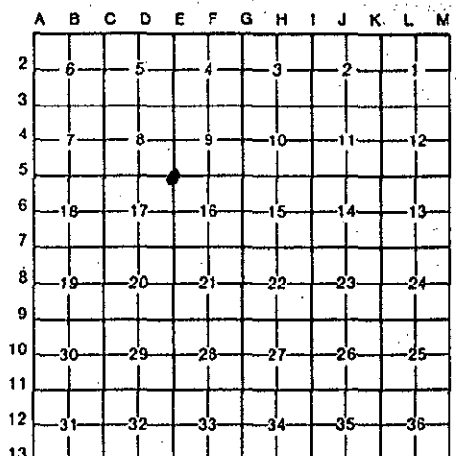
W. J. Bond
REG. OF DEEDS

7427

Register of Deeds Stamp & File Number

4. Lot No. _____, Recorded Plat _____
5. Private Claims _____

I, Randy Kolehouse, in a field survey on March 31, 19 94, do hereby certify that under requirements of P.A. 74, Michigan P.A. of 1970, the corner points mentioned in lines 1 and 2 above were in conformance with regulations and rules therefore as required in the current manual of survey instructions of the United States Department of the Interior, Bureau of Land Management or by a decree of a Court of Law and/or that the corner points mentioned in lines 3, 4 and 5 above were in conformance with the rules of the Michigan Board of Land Surveyors or by a Decree of a Court of Law; established, re-established, monumented, re-monumented, recovered, found as expressed below:



NOTE: Not more than 4 corners, all in the same town and range, may be recorded on this certificate.

A. Description of original monument and accessories and/or subsequent restoration:

E-5	1831	G.L.O. Notes	L. Lyon	Set Post
	1932	Wit. Map	K.C. Surveyor	1/2" Iron in Mon. Box
	1971	L.C.R.C. #55	Williams & Works	Iron in Mon. Box
	1982	L.C.R.C. #3034	Jonker	Fnd. Mon. Box/Set K.C. Mon.

The position of this corner was previously approved by the Kent County Remonumentation Peer Group monumented by Jonker Land Surveys on 7/20/82 and was recorded per L.C.R.C. #3034.

B. Description of corner evidence found and/or method applied in restoring or reestablishing corner:

E-5 Found Standard K.C. Monument per L.C.R.C. #3034 as set by Rob Jonker in place of an iron in monument box. He found and checked L.C.R.C. #55 and K.C. Surveyor records.

L.C.R.C. #3034

- MSHD tag on E side p. pole S 30° E 57.90'
- MSHD tag on SE side p. pole N 40° E 48.32'
- NE cor. to N fndn. to skywalk S 50° W 56.2'
- C/L M.H. North 17.85'
- On C/L "X" intersection

P.A. 345 1990 KENT COUNTY
PEER APPROVED 8/11/94
CHAIRMAN *[Signature]*

The selected location is accepted by me and is generally accepted by professional surveyors as the best available evidence of the position of the original corner.

C. Description of monument for corner and accessories established to perpetuate locating the position of the corner:

E-5 Standard Kent County Monument
PK in pole S 30° E 58.00'
Nail & MSHD tag in pole N 40° E 48.32'
NE cor. to N fndn. skywalk S 50° W 56.2'
SE cor. S fndn. skywalk N 50° W 55.22'
C/L M.H. North 17.95'



Signed by *Randy J. Kolehouse*
Surveyor's Michigan License No. 25854

Date 11/21/94