

# SURVEY & REMONUMENTATION

Kent County Remonumentation

APR 28 1995

STATE OF MICHIGAN  
COUNTY OF KENT  
RECEIVED FOR RECORD

COMMISSION

LAND CORNER RECORDATION CERTIFICATE  
Filing Requirement of Act 74, Mich. P.A. 1970

94 NOV 29 AM 9:19

For corners in  
Kent

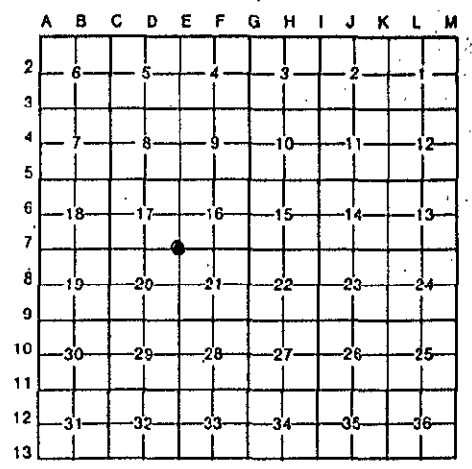
(County)	Located In:	Corner Code #
1. Public Land Survey	T 6N R 12W	E-7
	T _____ R _____	_____
	T _____ R _____	_____
	T _____ R _____	_____
2. Property Controlling in Section	S _____ T _____ R _____	_____
	S _____ T _____ R _____	_____
3. Miscellaneous Property in Sec.	S _____ T _____ R _____	_____
	S _____ T _____ R _____	_____

*Lee J. Bond*  
REG. OF DEEDS

7429

Register of Deeds Stamp & File Number

4. Lot No. \_\_\_\_\_, Recorded Plat \_\_\_\_\_  
5. Private Claims \_\_\_\_\_



I, Randy Kolehouse, in a field survey on March 29, 19 94, do hereby certify that under requirements of P.A. 74, Michigan P.A. of 1970, the corner points mentioned in lines 1 and 2 above were in conformance with regulations and rules therefore as required in the current manual of survey instructions of the United States Department of the Interior, Bureau of Land Management or by a decree of a Court of Law and/or that the corner points mentioned in lines 3, 4 and 5 above were in conformance with the rules of the Michigan Board of Land Surveyors or by a Decree of a Court of Law; established, re-established, monumented, re-monumented, recovered, found as expressed below:

**NOTE: Not more than 4 corners, all in the same town and range, may be recorded on this certificate.**

A. Description of original monument and accessories and/or subsequent restoration:

E-7	1831	G.L.O. Notes	L. Lyon	Set Post	P.A. 345 1990 KENT COUNTY
	1932	Wit. Map	K.C. Surveyor	Stone	PEER APPROVED 7/29/94
	1956	Wit. Map	K.C. Surveyor	Iron	CHAIRMAN <i>Harry Hubers</i>
	1971	L.C.R.C. #58	Williams & Works	P.K. Nail	
	1975	L.C.R.C. #814	Exxel Engineering	P.K. Nail	
	1982	L.C.R.C. #2818	Jonker	Fnd. P.K. Nail/Set K.C. Mon.	

This corner was originally approved by the Kent County Remonumentation Peer Group and monumented by Jonker Land Surveys on 3/22/82 and was recorded per L.C.R.C. #2818.

B. Description of corner evidence found and/or method applied in restoring or reestablishing corner:

E-7 Found K.C. Monument in Ivanrest Avenue running N-S on approx. C/L of Yellow Stone Street running W per L.C.R.C. #2818 as set by Rob Jonker in place of a P.K. nail which he checked to L.C.R.C.'s #58 and #814. Also checked closely to one wit. from K.C. Surveyor's wit. map.

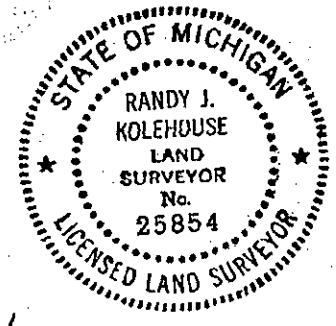
L.C.R.C. #2818

- Nail & K.C. remon. tag on W side t. pole N 23° W 69.92'
- Nail & K.C. remon. tag on S side p. pole N 90° E 49.94'
- Nail & K.C. remon. tag on N side p. pole S 90° W 143.43'
- NW cor. hse. fndn. S 37° E 123.12'
- C/L M.H. N 0° E 16.45'
- NE cor. brick on garage S 50° W 114.77'

The selected location is accepted by me and is generally accepted by professional surveyors as the best available evidence of the position of the original corner.

C. Description of monument for corner and accessories established to perpetuate locating the position of the corner:

- E-7 Standard Kent County Monument
- Nail & K.C. remon. tag on W side t. pole N 23° W 69.92'
- Nail & K.C. remon. tag on S side p. pole N 90° E 49.94'
- Nail & K.C. remon. tag on N side p. pole S 90° W 143.43'
- NE cor. brick on garage S 50° W 114.77'
- NW cor. hse. fndn. S 37° E 123.12'
- C/L M.H. N 0° E 16.45'



Signed by *Randy Kolehouse*  
Surveyor's Michigan License No. 25854

Date 11/21/94