

SURVEY & REMONUMENTATION

APR 28 1995

COMMISSION

Kent County Remonumentation

LAND CORNER RECORDATION CERTIFICATE
Filing Requirement of Act 74, Mich. P.A. 1970

STATE OF MICHIGAN
COUNTY OF KENT
RECEIVED FOR RECORD

94 NOV 29 AM 9:19

W. J. Bond
REG. OF DEEDS

For corners in
Kent
(County)

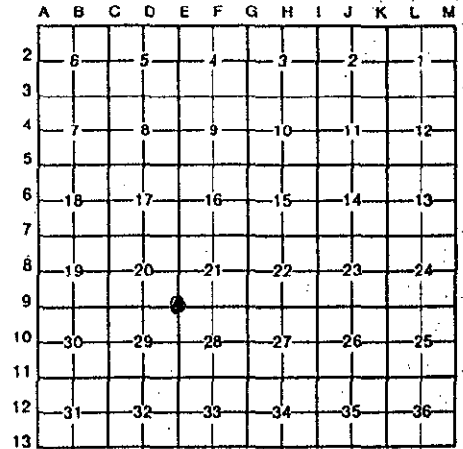
	Located In:	Corner Code #
1. Public Land Survey	T <u>6N</u> R <u>12W</u>	<u>E-9</u>
	T _____ R _____	_____
	T _____ R _____	_____
	T _____ R _____	_____
2. Property Controlling in Section	S _____ T _____ R _____	_____
	S _____ T _____ R _____	_____
3. Miscellaneous Property in Sec.	S _____ T _____ R _____	_____
	S _____ T _____ R _____	_____

7431
Register of Deeds Stamp & File Number

4. Lot No. _____, Recorded Plat _____
5. Private Claims _____

I, Randy Kolehouse, in a field survey on March 29, 19 94, do hereby certify that under requirements of P.A. 74, Michigan P.A. of 1970, the corner points mentioned in lines 1 and 2 above were in conformance with regulations and rules therefore as required in the current manual of survey instructions of the United States Department of the Interior, Bureau of Land Management or by a decree of a Court of Law and/or that the corner points mentioned in lines 3, 4 and 5 above were in conformance with the rules of the Michigan Board of Land Surveyors or by a Decree of a Court of Law; established, re-established, monumented, re-monumented, recovered, found as expressed below:

NOTE: Not more than 4 corners, all in the same town and range, may be recorded on this certificate.



A. Description of original monument and accessories and/or subsequent restoration:

E-9	1831	G.L.O. Notes	L. Lyon	Set Post
	1953	Wit. Map	K.C. Surveyor	3/4" Iron in Mon. Box
	1972	L.C.R.C. #279	Medema Van Kooten	R.R. Splke
	1973	L.C.R.C. #511	Exxel Engineering	Mon. Box
	1981	L.C.R.C. #1959	Exxel Engineering	Fnd. 1/2" Iron in Mon. Box/Set K.C. Mon.

This corner was originally approved by the Kent County Remonumentation Peer Group and monumented by Exxel Engineering, Inc., on 8/31/81 and was recorded per L.C.R.C. #1959.

B. Description of corner evidence found and/or method applied in restoring or reestablishing corner:

E-9 Found K.C. Monument in C/L intersection of Ivanrest Avenue running N-S and 44th Street running E-W per L.C.R.C. #1959 as set by Exxel Engineering in place of 1/2" Iron found and checked with L.C.R.C. #511.

L.C.R.C. #1959

C/L top of hydrant N 49° E 67.28'
SW cor. house N 28° E 164.05'
"X" in top of concrete curb N 85° W 48.13'
"X" in top of concrete curb S 41° W 72.31'
"X" in top of concrete curb S 86° E 48.87'

P.A. 345 1990 KENT COUNTY,
PEER APPROVED 7/28/94
CHAIRMAN *Harry Stuber*

The selected location is accepted by me and is generally accepted by professional surveyors as the best available evidence of the position of the original corner.

C. Description of monument for corner and accessories established to perpetuate locating the position of the corner:

E-9 Standard Kent County Monument
C/L top of hydrant N 49° E 67.28'
SW cor. house N 28° E 164.05'
"X" in top of concrete curb N 85° W 48.13'
"X" in top of concrete curb S 41° W 72.31'
"X" in top of concrete curb S 86° E 48.87'



Signed by *Randy J. Kolehouse* Date 11/21/94
Surveyor's Michigan License No. 25854