

SURVEY & REMONUMENTATION

APR 28 1995

Kent County Remonumentation

STATE OF MICHIGAN
COUNTY OF KENT
RECEIVED FOR RECORD

COMMISSION

LAND CORNER RECORDATION CERTIFICATE
Filing Requirement of Act 74, Mich. P.A. 1970

94 NOV 29 AM 9:20

Tim J. Bond
REG. OF DEEDS

7453

Register of Deeds Stamp & File Number

For corners in

Kent

(County)

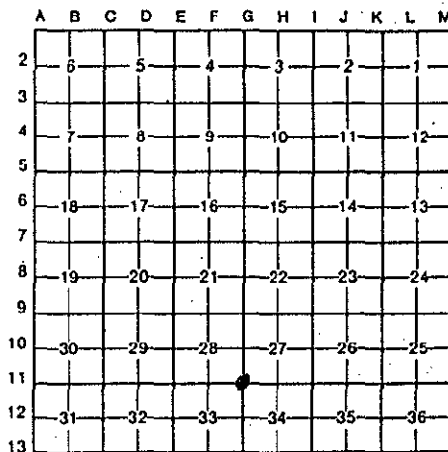
Located In:

Corner Code #

1. Public Land Survey	T <u>6N</u> R <u>12W</u>	<u>G-11</u>
	T _____ R _____	_____
	T _____ R _____	_____
	T _____ R _____	_____
2. Property Controlling in Section	S _____ T _____ R _____	_____
	S _____ T _____ R _____	_____
3. Miscellaneous Property in Sec.	S _____ T _____ R _____	_____
	S _____ T _____ R _____	_____

4. Lot No. _____, Recorded Plat _____

5. Private Claims _____



I, Randy Kolehouse, in a field survey on March 24, 19 94,

do hereby certify that under requirements of P.A. 74, Michigan P.A. of 1970, the corner points mentioned in lines 1 and 2 above were in conformance with regulations and rules therefore as required in the current manual of survey instructions of the United States Department of the Interior, Bureau of Land Management or by a decree of a Court of Law and/or that the corner points mentioned in lines 3, 4 and 5 above were in conformance with the rules of the Michigan Board of Land Surveyors or by a Decree of a Court of Law; established, re-established, monumented, re-monumented, recovered, found as expressed below:

NOTE: Not more than 4 corners, all in the same town and range, may be recorded on this certificate.

A. Description of original monument and accessories and/or subsequent restoration:

G-11	1831	G.L.O. Notes	L. Lyon	Set Post
	1933	Wit Map	KC Surveyor	"+" in Pavement
	1958	Wit Map	Williams & Works	"+" in Pavement
	1972	L.C.R.C. #277	Medema Van Kooten	Nail in Pavement
	1981	L.C.R.C. #1961	Exxel Eng	End PK Nail/Set KC Mon.

This corner was originally approved by the Kent County Remonumentation Peer Group and monumented by Exxel Engineering, Inc., on 8/31/81 and was recorded per L.C.R.C. #1961.

B. Description of corner evidence found and/or method applied in restoring or reestablishing corner:

G-11 Found KC Monument at centerline of Byron Center Ave. running N-S and 52nd St. running E-W per L.C.R.C #1961 as set by Exxel Eng in place of a PK nail which they found and checked with 1958 Williams & Works survey records and L.C.R.C. #277.

L.C.R.C. #1961

At CL "X" of intersection

P.A. 345 1990 KENT COUNTY

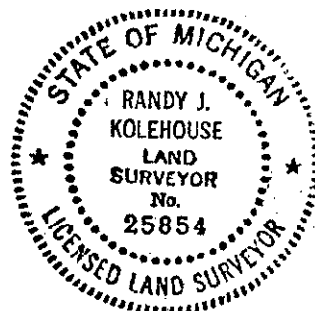
PEER APPROVED 11/28/94

CHAIRMAN *Harry Hubers*

The selected location is accepted by me and is generally accepted by professional surveyors as the best available evidence of the position of the original corner.

C. Description of monument for corner and accessories established to perpetuate locating the position of the corner:

G-11 Standard Kent County Monument
Nail & K.C. remon. tag in NW side p. pole N 45° E 57.16'
Nail & K.C. remon tag in SW side 16" Elm N 40° W 116.75'
"+" cut in SW side conc. base to traffic light S 40° E 73.31'
Nail in SE side p. pole S 50° W 66.07'



Signed by Randy J. Kolehouse

Date 11/21/94

Surveyor's Michigan License No. 25854