

SURVEY & REMONUMENTATION

Kent County Remonumentation

STATE OF MICHIGAN
COUNTY OF KENT
RECEIVED FOR RECORD

LAND CORNER RECORDATION CERTIFICATE
Filing Requirement of Act 74, Mich. P.A. 1970

NOV 29 AM 9:23

For corners in APR 28 1995

Kent (County) **COMMISSION** Located In: Corner Code J-5

1. Public Land Survey T 6N R 12W J-5
T _____ R _____
T _____ R _____
T _____ R _____
2. Property Controlling S _____ T _____ R _____
in Section S _____ T _____ R _____
3. Miscellaneous S _____ T _____ R _____
Property in Sec. S _____ T _____ R _____
4. Lot No. _____, Recorded Plat _____
5. Private Claims _____

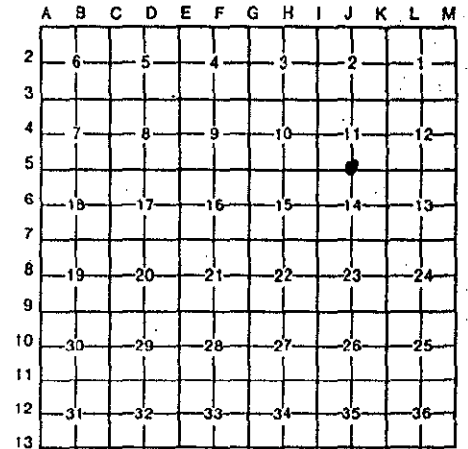
Lee J. Bond
REG. OF DEEDS

7477

Register of Deeds Stamp & File Number

I, Randy Kolehouse, in a field survey on June 8, 19 94

do hereby certify that under requirements of P.A. 74, Michigan P.A. of 1970, the corner points mentioned in lines 1 and 2 above were in conformance with regulations and rules therefore as required in the current manual of survey instructions of the United States Department of the Interior, Bureau of Land Management or by a decree of a Court of Law and/or that the corner points mentioned in lines 3, 4 and 5 above were in conformance with the rules of the Michigan Board of Land Surveyors or by a Decree of a Court of Law; established, re-established, monumented, re-monumented, recovered, found as expressed below:



NOTE: Not more than 4 corners, all in the same town and range, may be recorded on this certificate.

A. Description of original monument and accessories and/or subsequent restoration:

J-5	1831	G.L.O. Notes	L. Lyon	Set Post
	1943	Wit. Map	K.C. Surveyor	"+" in Pavement
	1956	Wit. Map	K.C. Surveyor	"+" in Pavement
	1967	Survey Records	MDSH	Bt. Spk
	1975	L.C.R.C. #832	Moore & Bruggink	P.K. Nail
	1984	L.C.R.C. #4100	Rosema	Fnd. P.K. Nail/Set K.C. Mon.
	1988	L.C.R.C. #4696	Bueche	K.C. Mon.

P.A. 345 1990 KENT COUNTY,

PEER APPROVED 8/11/94
CHAIRMAN Vary Fisher

The position of this corner was previously approved by the Kent County Remonumentation Peer Group monumented by Maurice J. Rosema on 11/1/84 and was recorded per L.C.R.C. #4100.

B. Description of corner evidence found and/or method applied in restoring or reestablishing corner:

J-5 Found K.C. Monument at the approximate centerline intersection of 28th St. running E-W and Michael St. running N-S per L.C.R.C. #4100 as set by M. Rosema in place of a P.K. nail he found which checked with L.C.R.C. #832, MDSH survey records and street improvement plans, City of Wyoming.

L.C.R.C. #4696

L.C.R.C. #4100

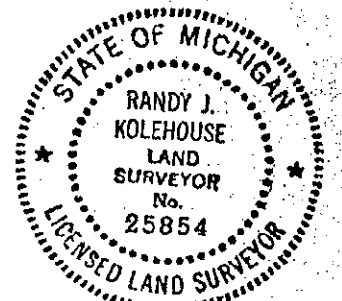
SW corner of metal pedestal of cross walk sign N 41° E 63.8'
Center of top of hyd. N 20° W 57.20'
Face of concrete light pole S 43° W 67.28'
SW corner of casting of catch basin S 50° E 71.30'

Center to top of hyd. N 20° W 57.20'
Face of concrete light pole S 43° W 67.28'
SW corner of casting of catch basin S 50° E 71.30'

The selected location is accepted by me and is generally accepted by professional surveyors as the best available evidence of the position of the original corner.

C. Description of monument for corner and accessories established to perpetuate locating the position of the corner:

J-5 Standard Kent County Monument
SW corner metal base cross walk sign N 41° E 63.8'
C/L top hyd. N 20° W 57.20'
Face of concrete light pole S 43° W 67.28'
SW corner casting CB S 50° E 71.30'



Signed by Randy J. Kolehouse
Surveyor's Michigan License No. 25854

Date 11/21/94