

\$7.00  
\$2.00

SEAN 6 8 1999

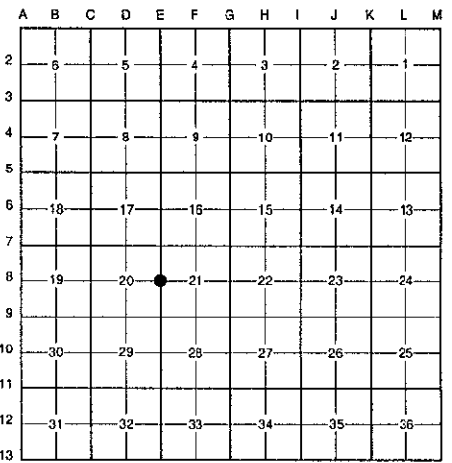
SECTION LAND CORNER RECORDATION CERTIFICATE  
Filing Requirement of Act 74, Mich. P.A. 1970  
KENT COUNTY REMONUMENTATION

STATE OF MICHIGAN  
COUNTY OF KENT  
RECEIVED FOR RECORD  
38 OCT 23 AM 9:57  
REG. OF DEEDS  
*Lucy Stand*

For corners in Kent (County) Located in: Vergennes Township Corner Code #  
1. Public Land Survey T 7N R 9W E-8  
T \_\_\_\_\_ R \_\_\_\_\_  
T \_\_\_\_\_ R \_\_\_\_\_  
T \_\_\_\_\_ R \_\_\_\_\_  
2. Property Controlling in Section S \_\_\_\_\_ T \_\_\_\_\_ R \_\_\_\_\_  
S \_\_\_\_\_ T \_\_\_\_\_ R \_\_\_\_\_  
3. Miscellaneous Property in Sec. S \_\_\_\_\_ T \_\_\_\_\_ R \_\_\_\_\_  
S \_\_\_\_\_ T \_\_\_\_\_ R \_\_\_\_\_  
4. Lot No. \_\_\_\_\_, Recorded Plat \_\_\_\_\_  
5. Private Claims \_\_\_\_\_

10761  
Register of Deeds Stamp & File Number

I, Randy Kolehouse, in a field survey on January 12 19 98, do hereby certify that under requirements of P.A. 74 Michigan P.A. of 1970, the corner points mentioned in lines 1 and 2 above were in conformance with regulations and rules therefore as required in the current manual of survey instructions of the United States Department of the interior, Bureau of Land Management or by a decree of a Court of Law and/or that the corner points mentioned in lines 3, 4 and 5 above were in conformance with the rules of the Michigan Board of Land Surveyors or by a Decree of a Court of Law; established, re-established, monumented, re-monumented, recovered, found as expressed below:



NOTE: Not more than 4 corners, all in the same town and range, may be recorded on this certificate.

A. Description of original monument and accessories and/or subsequent restoration:

E-8	1838	G.L.O. Notes	N. Brookfield	Set Post
	N/A	Witness Map	K.C. Surveyor	Stone
	1971	L.C.R.C. #59	Williams & Works	Fnd. Stone / Set "T" Iron
	1974	L.C.R.C. #737	J. Clapp	Stone
	1984	L.C.R.C. #3998	R. Kolehouse	Fnd. Stone / Set K.C. Monument
	1991	L.C.R.C. #5843	Exxel Engineering	K.C. Monument

P.A. 345 1990 KENT COUNTY  
PEER APPROVED 2/19/98  
CHAIRMAN *Randy Kolehouse*

This corner was originally approved by the Kent County Remonumentation Peer Group and monumented by R. Kolehouse on 10/27/84 and was recorded per L.C.R.C. #3998.

B. Description of corner evidence found and/or method applied in restoring or reestablishing corner:

E-8	Found a Standard Kent County Monument 30.0' ± East of a fence line and tree row running North and South and 10.0' ± North of a fence line running West per L.C.R.C.'s #3998 and #5843 as set by Randy Kolehouse in place of a stone he found which checked L.C.R.C. #737.
-----	---

L.C.R.C. #3998	L.C.R.C. #5843
Nail & K.C. Remon. Tag in S. side 4" W. Cherry N 55 W 24.65'	Nail & remon tag in E side twin 18" Oak S 18° W 3.55' (m. 3.58")
Nail & K.C. Remon. Tag in E. side Tw 16" Oak S 30 W 3.55'	Nail & remon tag in SW side 10" W. cherry N 58° W 24.82' (m. 24.92")
	Nail & remon tag in W side 14" Oak N 02° W 43.50' (m. 43.47")
	Nail & remon tag in N side 12" Hickory S 85° E 42.14' (m. 42.11")
	Nail & remon tag in E side 8" Oak S 17° E 45.10'

The selected location is accepted by me and is generally accepted by professional surveyors as the best available evidence of the position of the original corner.

C. Description of monument for corner and accessories established to perpetuate locating the position of the corner:

E-8	Standard Kent County Monument
-----	-------------------------------

Nail & K.C. remon. tag on E side twin 18" Oak S 18° W 3.58"
Nail & K.C. remon. tag on SW side 10" W. Cherry N 58° W 24.92"
Nail & K.C. remon. tag on W side 14" Oak N 02° W 43.47"
Nail & K.C. remon. tag on N side 12" Hickory S 85° E 42.11'
Nail & K.C. remon. tag on E side 8" Oak S 17° E 45.10'
Fence line and tree row running N-S, West 30.0' ±
Fence line running W, South 10.0' ±

Signed by Randy J. Kolehouse Date \_\_\_\_\_  
EARTH TECH

Surveyor's Michigan License No. 25854

