

\$7.00  
\$2.00

SEP 6 8 1999

SECTION

LAND CORNER RECORDATION CERTIFICATE  
Filing Requirement of Act 74, Mich. P.A. 1970  
KENT COUNTY REMONUMENTATION

STATE OF MICHIGAN  
COUNTY OF KENT  
RECEIVED FOR RECORD  
98 OCT 23 AM 9:57  
REG. OF DEEDS  
*Luis Bond*

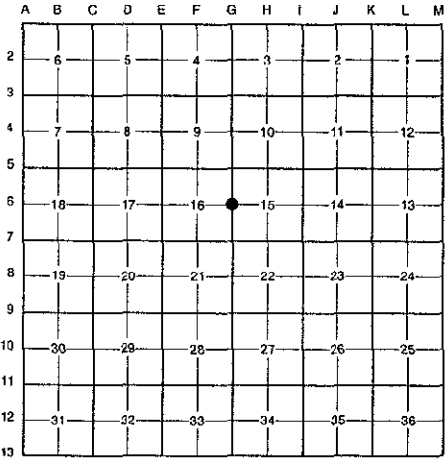
For corners in

Kent (County)	Located in: Vergennes Township	Corner Code #
1. Public Land Survey	T <u>7N</u> R <u>9W</u>	<u>G-6</u>
	T _____ R _____	_____
	T _____ R _____	_____
	T _____ R _____	_____
2. Property Controlling in Section	S _____ T _____ R _____	_____
	S _____ T _____ R _____	_____
3. Miscellaneous Property in Sec.	S _____ T _____ R _____	_____
	S _____ T _____ R _____	_____

10775

Register of Deeds Stamp & File Number

- 4. Lot No. \_\_\_\_\_, Recorded Plat \_\_\_\_\_
- 5. Private Claims \_\_\_\_\_



I, Randy Kolehouse, in a field survey on December 30 19 97, do hereby certify that under requirements of P.A. 74 Michigan P.A. of 1970, the corner points mentioned in lines 1 and 2 above were in conformance with regulations and rules therefore as required in the current manual of survey instructions of the United States Department of the Interior, Bureau of Land Management or by a decree of a Court of Law and/or that the corner points mentioned in lines 3, 4 and 5 above were in conformance with the rules of the Michigan Board of Land Surveyors or by a Decree of a Court of Law; established, re-established, monumented, re-monumented, recovered, found as expressed below:

**NOTE: Not more than 4 corners, all in the same town and range, may be recorded on this certificate.**

A. Description of original monument and accessories and/or subsequent restoration:

G-6	1838	G.L.O. Notes	N. Brookfield	Set Post
	1937	Witness Map	K.C. Surveyor	Iron
	1973	L.C.R.C. #400	Williams & Works	"T" Iron
	1981	L.C.R.C. #1941	Jonker Land Survey	Fnd. RR Spike Over "T" Iron / Set K.C. Monument
	1991	L.C.R.C. #5789	Exxel Engineering	K.C. Monument

P.A. 345 1990 KENT COUNTY  
PEER APPROVED 2/19/98  
CHAIRMAN Randy Kolehouse

This corner was originally approved by the Kent County Remonumentation Peer Group and monumented by Rob Jonker on 8/6/81 and was recorded per L.C.R.C. #1941.

B. Description of corner evidence found and/or method applied in restoring or reestablishing corner:

G-6 Found a Standard Kent County Monument at the C/L intersection of Alden Nash (bit.) running North and South and Downes Street (gravel) running East and West per L.C.R.C.'s #1941 and #5789 as set by Rob Jonker in place of a RR spike he found at grade over a "T" iron 16" below grade which checked L.C.R.C. #400 and the K.C. Surveyor's records.

L.C.R.C. #1941

- Remon. tag on S side 18" Hickory N58°E 49.41'
- Remon. tag on N side 8" Elm S57°E 53.97'
- Remon. tag on NE side 6" Oak N46°W 58.56'
- Remon. tag on NW side 8" Elm S35°W 59.95'

L.C.R.C. #5789

- Nail & remon tag in N side 14" Elm S 56°E 53.81'
- Nail & remon tag in NW side 12" Elm S 35°W 59.88'
- Nail & remon. tag in SW side 12" Oak N 43°W 58.54' (m. 58.57')
- Nail & remon tag in 22" Hickory N 60° 49.41' (m. 49.40')

The selected location is accepted by me and is generally accepted by professional surveyors as the best available evidence of the position of the original corner.

C. Description of monument for corner and accessories established to perpetuate locating the position of the corner:

- G-6 Standard Kent County Monument
- Nail & K.C. remon. tag on N side 14" Elm S 56° E 53.81'
  - Nail & K.C. remon. tag on NW side 12" Elm S 35° W 59.88'
  - Nail & K.C. remon. tag on SW side 12" Oak N 43° W 58.57'
  - Nail & K.C. remon. tag on SE side 22" Hickory N 60° E 49.40'
  - On C/L "X" of bit. road running N-S and gravel road running E-W



Signed by Randy J. Kolehouse Date 9-1-98  
EARTH TECH

Surveyor's Michigan License No. 25854