

**SURVEY & REMONUMENTATION**

\$7.00  
\$2.00

MAR 9 8 1999

**LAND CORNER RECORDATION CERTIFICATE**  
Filing Requirement of Act 74, Mich. P.A. 1970  
KENT COUNTY REMONUMENTATION

STATE OF MICHIGAN  
COUNTY OF KENT  
RECEIVED FOR RECORDS  
38 OCT 23 AM 9:57  
REG. OF DEEDS  
*David Bond*

10780

Register of Deeds Stamp & File Number

For corners in SECTION \_\_\_\_\_

Kent (County)	Located in: Vergennes Township	Corner Code #
1. Public Land Survey	T <u>7N</u> R <u>9W</u>	<u>G-12</u>
	T _____ R _____	_____
	T _____ R _____	_____
	T _____ R _____	_____
2. Property Controlling in Section	S _____ T _____ R _____	_____
	S _____ T _____ R _____	_____
3. Miscellaneous Property in Sec.	S _____ T _____ R _____	_____
	S _____ T _____ R _____	_____
4. Lot No. _____, Recorded Plat _____		
5. Private Claims _____		

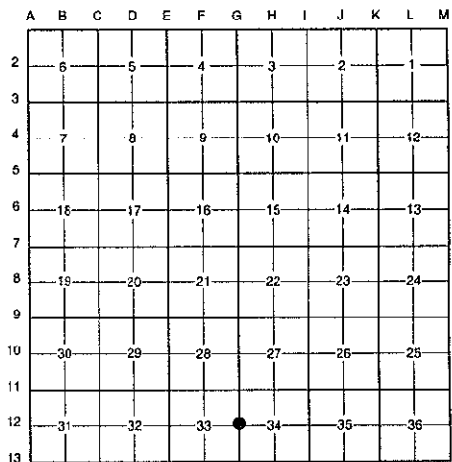
I, Randy Kolehouse, in a field survey on January 7 19 98, do hereby certify that under requirements of P.A. 74 Michigan P.A. of 1970, the corner points mentioned in lines 1 and 2 above were in conformance with regulations and rules therefore as required in the current manual of survey instructions of the United States Department of the interior, Bureau of Land Management or by a decree of a Court of Law and/or that the corner points mentioned in lines 3, 4 and 5 above were in conformance with the rules of the Michigan Board of Land Surveyors or by a Decree of a Court of Law; established, re-established, monumented, re-monumented, recovered, found as expressed below:

**NOTE: Not more than 4 corners, all in the same town and range, may be recorded on this certificate.**

**A. Description of original monument and accessories and/or subsequent restoration:**

G-12	1838	G.L.O. Notes	N. Brookfield	Set Post
	1963	Witness Map	K.C. Surveyor	"T" Iron
	3878	L.C.R.C. #3878	Williams & Works	1-1/4" Iron
	1984	L.C.R.C. #3887	R. Kolehouse	Fnd. 1" Iron / Set K.C. Monument
	1991	L.C.R.C. #5795	Exxel Engineering	K.C. Monument

P.A. 345 1990 KENT COUNTY  
PEER APPROVED 2/19/98  
CHAIRMAN Harry Shubert



This corner was originally approved by the Kent County Remonumentation Peer Group and monumented by R. Kolehouse on 8/18/84 and was recorded per L.C.R.C. #3887.

**B. Description of corner evidence found and/or method applied in restoring or reestablishing corner:**

G-12 Found a Standard Kent County Monument 50' ± West of the C/L of Aiden Nash (bit.) running North and South, on line of a fence line running East and a tree row running East and West, per L.C.R.C.'s #3887 and #5795 as set by Randy Kolehouse in place of a 1" iron he found which checked L.C.R.C. #3878 and the K.C. Surveyor's records.

L.C.R.C. #3887

L.C.R.C. #5795

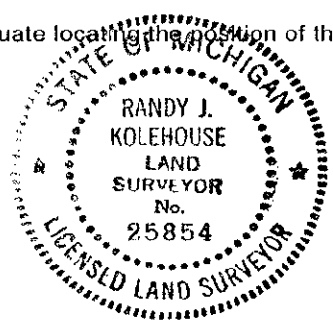
Nail & K.C. Remon. tag in E. side P.Pole S 15 W 79.12'

Nail & remon tag in E side P.Pole S 20°W 79.13' (m. 79.16')

The selected location is accepted by me and is generally accepted by professional surveyors as the best available evidence of the position of the original corner.

**C. Description of monument for corner and accessories established to perpetuate locating the position of the corner:**

- G-12 Standard Kent County Monument
  - Nail & K.C. remon. tag on E side P. pole S 20° W 79.16'
  - Nail & K.C. remon. tag on S side 40" Oak S 88° W 64.45'
  - Nail & K.C. remon. tag on E side 6" Maple N 09° W 68.40'
  - Nail & K.C. remon. tag on S side P. pole N 86° E 87.04'
  - "X" cut in top conc. culvert S end "X" cut .57' from end N 36° E 22.59'
  - C/L of bit. road running N-S, East 50.0'
  - On fence line running E
  - On tree row running E-W



Signed by Randy J. Kolehouse  
EARTH TECH

Date 9-1-98

Surveyor's Michigan License No. 25854