

\$7.00
\$2.00

DEC 23 1998

SECTION

LAND CORNER RECORDATION CERTIFICATE
Filing Requirement of Act 74, Mich. P.A. 1970
KENT COUNTY REMONUMENTATION

For corners in

Kent (County)	Located in: Vergennes Township	Corner Code #
1. Public Land Survey	T <u>7N</u> R <u>9W</u>	<u>H-2</u>
	T _____ R _____	_____
	T _____ R _____	_____
	T _____ R _____	_____
2. Property Controlling in Section	S _____ T _____ R _____	_____
	S _____ T _____ R _____	_____
3. Miscellaneous Property in Sec.	S _____ T _____ R _____	_____
	S _____ T _____ R _____	_____

STATE OF MICHIGAN
COUNTY OF KENT
RECEIVED FOR RECORD

38 DEC 23 AM 8:51

REG. OF DEEDS

Lucy Staud

11063

Register of Deeds Stamp & File Number

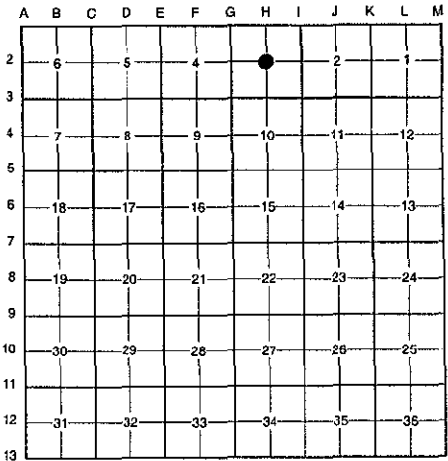
- 4. Lot No. _____, Recorded Plat _____
- 5. Private Claims _____

I, Randy Kolehouse, in a field survey on December 9 19 98, do hereby certify that under requirements of P.A. 74 Michigan P.A. of 1970, the corner points mentioned in lines 1 and 2 above were in conformance with regulations and rules therefore as required in the current manual of survey instructions of the United States Department of the interior, Bureau of Land Management or by a decree of a Court of Law and/or that the corner points mentioned in lines 3, 4 and 5 above were in conformance with the rules of the Michigan Board of Land Surveyors or by a Decree of a Court of Law; established, re-established, monumented, re-monumented, recovered, found as expressed below:

NOTE: Not more than 4 corners, all in the same town and range, may be recorded on this certificate.

A. Description of original monument and accessories and/or subsequent restoration:

H-2 This corner was not originally set by the G.L.O.
No information on record for this corner.



P.A. 345 1990 KENT COUNTY
PEER APPROVED 12/15/98
CHAIRMAN *[Signature]*

B. Description of corner evidence found and/or method applied in restoring or reestablishing corner:

H-2 Set a monument at the intersection of 1/4 lines. Monument is 100' ± South of the North edge of swamp, 6' ± South of an old fence line (posts only) running East and West, and 3' ± West of an old fence line (posts only) running North and South.

The selected location is accepted by me and is generally accepted by professional surveyors as the best available evidence of the position of the original corner.

C. Description of monument for corner and accessories established to perpetuate locating the position of the corner:

- H-2 Set a Standard Kent County Monument
- Nail & K.C. remon. tag on S side 10" Oak N 60° E 30.25'
- Nail & K.C. remon. tag on S side 4" Oak N 45° W 16.51'
- Nail & K.C. remon. tag on E side 5" Oak S 05° W 6.83'
- Nail & K.C. remon. tag on W side 5" Oak S 05° E 13.26'
- Old fence line running N-S, East 3' ±
- Old fence line running E-W, North 6' ±



Signed by *Randy J. Kolehouse* Date 12/14/98
EARTH TECH

Surveyor's Michigan License No. 25854