

SURVEY & REMONUMENTATION

\$7.00
\$2.00

DEC 8 1999

LAND CORNER RECORDATION CERTIFICATE
Filing Requirement of Act 74, Mich. P.A. 1970
KENT COUNTY REMONUMENTATION

For corners in SECTION Located in: Vergennes Township Corner Code #

Kent (County)

1. Public Land Survey	T <u>7N</u>	R <u>9W</u>	<u>H-12</u>
	T _____	R _____	_____
	T _____	R _____	_____
	T _____	R _____	_____
2. Property Controlling in Section	S _____	T _____	R _____
	S _____	T _____	R _____
3. Miscellaneous Property in Sec.	S _____	T _____	R _____
	S _____	T _____	R _____

STATE OF MICHIGAN
COUNTY OF KENT
RECEIVED FOR RECORD

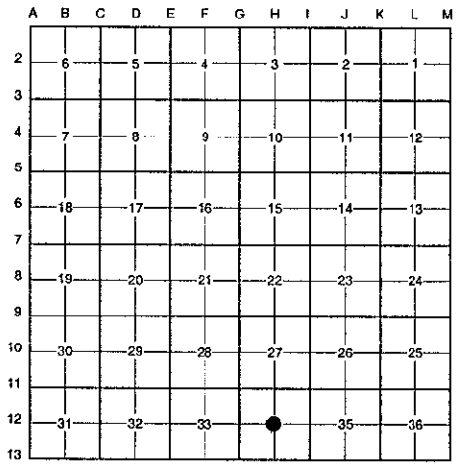
99 DEC 23 AM 8:52

REG. OF DEEDS *Lucy Bond*

11064
Register of Deeds Stamp & File Number

4. Lot No. _____, Recorded Plat _____
5. Private Claims _____

I, Randy Kolehouse, in a field survey on December 9 19 98, do hereby certify that under requirements of P.A. 74 Michigan P.A. of 1970, the corner points mentioned in lines 1 and 2 above were in conformance with regulations and rules therefore as required in the current manual of survey instructions of the United States Department of the interior, Bureau of Land Management or by a decree of a Court of Law and/or that the corner points mentioned in lines 3, 4 and 5 above were in conformance with the rules of the Michigan Board of Land Surveyors or by a Decree of a Court of Law; established, re-established, monumented, re-monumented, recovered, found as expressed below:



NOTE: Not more than 4 corners, all in the same town and range, may be recorded on this certificate.

A. Description of original monument and accessories and/or subsequent restoration:

H-12 This corner was not originally set by the G.L.O.

1915	Survey Records	Williams & Works	Leaded Stone
N/A	Witness Map	K.C. Surveyor	Leaded Stone

P.A. 345 1990 KENT COUNTY
PEER APPROVED 9/24/98
CHAIRMAN *Harry Fisher*

B. Description of corner evidence found and/or method applied in restoring or reestablishing corner:

H-12 Leaded stone indicated on the witness map and Williams & Works survey notes of 1915 was not recovered. Set a monument at the intersection of 1/4 lines. Monument is on line of a fence line running South and West.

The selected location is accepted by me and is generally accepted by professional surveyors as the best available evidence of the position of the original corner.

C. Description of monument for corner and accessories established to perpetuate locating the position of the corner:

H-12 Set a Standard Kent County Monument

- Nail & K.C. remon. tag on E side 10" Ash N 10° W 26.48'
- Nail & K.C. remon. tag on W side 8" Ash N 15° E 21.64'
- Nail & K.C. remon. tag on S side 4" Ash S 80° E 15.15'
- Nail & K.C. remon. tag on E side 12" Ash 24.05'
- On fence line running S & W



Signed by *Randy J. Kolehouse* Date 12/14/98
EARTH TECH

Surveyor's Michigan License No. 25854