

SECTION

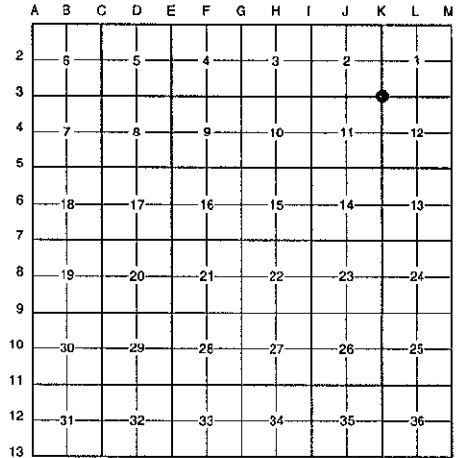
For corners in Kent (County) Located in: Vergennes Township Corner Code #

1. Public Land Survey	T <u>7N</u>	R <u>9W</u>	<u>K-3</u>
	T _____	R _____	_____
	T _____	R _____	_____
	T _____	R _____	_____
2. Property Controlling in Section	S _____	T _____	R _____
	S _____	T _____	R _____
3. Miscellaneous Property in Sec.	S _____	T _____	R _____
	S _____	T _____	R _____

4. Lot No. \_\_\_\_\_, Recorded Plat \_\_\_\_\_

5. Private Claims \_\_\_\_\_

I, Randy Kolehouse, in a field survey on December 30 19 97, do hereby certify that under requirements of P.A. 74 Michigan P.A. of 1970, the corner points mentioned in lines 1 and 2 above were in conformance with regulations and rules therefore as required in the current manual of survey instructions of the United States Department of the interior, Bureau of Land Management or by a decree of a Court of Law and/or that the corner points mentioned in lines 3, 4 and 5 above were in conformance with the rules of the Michigan Board of Land Surveyors or by a Decree of a Court of Law; established, re-established, monumented, re-monumented, recovered, found as expressed below:



**NOTE: Not more than 4 corners, all in the same town and range, may be recorded on this certificate.**

A. Description of original monument and accessories and/or subsequent restoration:

K-3	1838	G.L.O. Notes	N. Brookfield	Set Post
	1938	Witness Map	K.C. Surveyor	Concrete Monument
	1984	L.C.R.C. #3893	Kolehouse	Fnd. Concrete Monument / Set K.C. Monument
	1995	L.C.R.C. #8253	William Byl	K.C. Monument

This corner was originally approved by the Kent County Remonumentation Peer Group and monumented by Randy Kolehouse on 8/18/84 and was recorded per L.C.R.C. #3893.

B. Description of corner evidence found and/or method applied in restoring or reestablishing corner:

K-3 Found a Standard Kent County Monument 5.0' North of the C/L of 3 Mile Road (bit.) running East and West, 5.0' West of the C/L of Ashley Avenue (gravel) running North, on line of a fence line running South per L.C.R.C.'s #3893 and #8253 as set by Randy Kolehouse in place of a concrete monument he found which checked the K.C. Surveyor's records.

L.C.R.C. #3893

- Nail & K.C. Remon. tag in SW side P Pole N 40 W 45.10'
- Nail & K.C. Remon. tag in NW side 10" Maple S 40 W 42.02'
- Nail & K.C. Remon. tag in W. side 36" Oak S 10 E 41.78'
- Nail & K.C. Remon. tag in S. side 36" Maple N 75 E 76.12'
- NE corner house S 40 E 83.75'

L.C.R.C. #8253

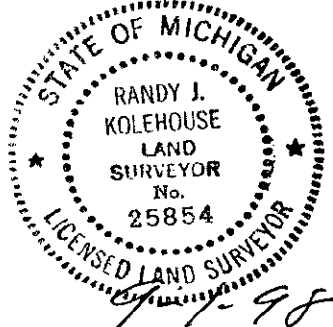
- Nail & KC Remon. tag SW side P. Pole N40°W 45.05' (m. 45.07')
- Nail & KC Remon. tag NW side 14" Maple S40°W 42.06' (m. 42.09')
- Nail & KC Remon. tag W. side 40" Oak S10°E 41.75' (m. 41.74')
- Nail & KC Remon. tag S. side 40" Maple N75°E 76.14' (m. 76.21')
- NE corner house S40°E 83.75' (m. 83.88')

The selected location is accepted by me and is generally accepted by professional surveyors as the best available evidence of the position of the original corner.

C. Description of monument for corner and accessories established to perpetuate locating the position of the corner:

K-3 Standard Kent County Monument

- Nail & K.C. remon. tag on SW side P. pole N 40° W 45.07'
- Nail & K.C. remon. tag on NW side 14" Maple S 40° W 42.09'
- Nail & K.C. remon. tag on W side 40" Oak S 10° 41.74'
- Nail & K.C. remon. tag on S side 40" Maple N 75° E 76.21'
- NE cor. house S 40° E 83.88'
- C/L of bit. road running E-W, South 5.0'
- C/L of gravel road running N, East 5.0'



Signed by Randy J. Kolehouse Date \_\_\_\_\_

Surveyor's Michigan License No. 25854