

SECURITY & REMONUMENTATION

\$7.00
\$2.00

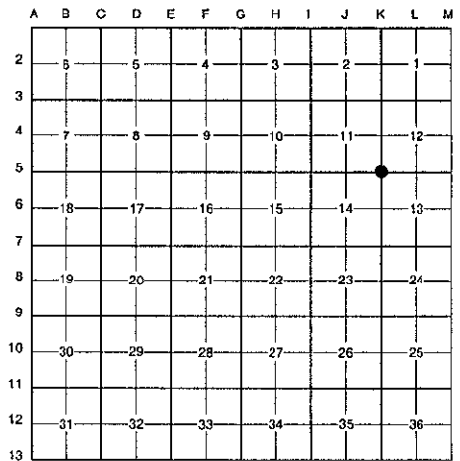
MAR 08 1999

LAND CORNER RECORDATION CERTIFICATE
Filing Requirement of Act 74, Mich. P.A. 1970
KENT COUNTY REMONUMENTATION

STATE OF MICHIGAN
 COUNTY OF KENT
 RECEIVED FOR RECORD
 98 OCT 23 AM 9:58
 REG. OF DEEDS
 10806
 Register of Deeds Stamp & File Number

For corners in SECTION _____

Kent (County)	Located in: Vergennes Township	Corner Code #
1. Public Land Survey	T <u>7N</u> R <u>9W</u>	<u>K-5</u>
	T _____ R _____	_____
	T _____ R _____	_____
	T _____ R _____	_____
2. Property Controlling in Section	S _____ T _____ R _____	_____
	S _____ T _____ R _____	_____
3. Miscellaneous Property in Sec.	S _____ T _____ R _____	_____
	S _____ T _____ R _____	_____
4. Lot No. _____, Recorded Plat _____		
5. Private Claims _____		



I, Randy Kolehouse, in a field survey on January 13 19 98, do hereby certify that under requirements of P.A. 74 Michigan P.A. of 1970, the corner points mentioned in lines 1 and 2 above were in conformance with regulations and rules therefore as required in the current manual of survey instructions of the United States Department of the interior, Bureau of Land Management or by a decree of a Court of Law and/or that the corner points mentioned in lines 3, 4 and 5 above were in conformance with the rules of the Michigan Board of Land Surveyors or by a Decree of a Court of Law; established, re-established, monumented, re-monumented, recovered, found as expressed below:

NOTE: Not more than 4 corners, all in the same town and range, may be recorded on this certificate.

A. Description of original monument and accessories and/or subsequent restoration:

K-5	1838	G.L.O. Notes	N. Brookfield	Set Post
	1976	L.C.R.C. #1082	Medema, Van Kooten & Assoc.	Set Square Spike
	1982	L.C.R.C. #2865	Jonker Land Survey	Fnd. Square Spike / Set Capped Rerod
	1995	L.C.R.C. #8255	William Byl	Capped Rerod

This corner was originally approved by the Kent County Remonumentation Peer Group and monumented by Rob Jonker on 5/18/82 and was recorded per L.C.R.C. #2865.

B. Description of corner evidence found and/or method applied in restoring or reestablishing corner:

K-5 Found a capped iron in the SE side of a 14" Oak at corner of fence lines running North and West per L.C.R.C.'s #2865 and #8255 as set by Rob Jonker in place of a square spike he found which checked L.C.R.C. #1082. P.A. 345 1990 KENT COUNTY PEER APPROVED 2/19/98 CHAIRMAN Randy Kolehouse

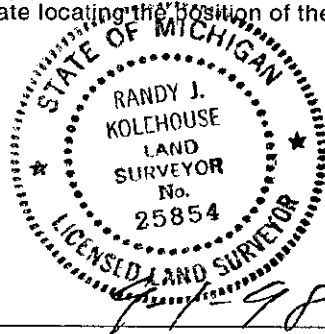
L.C.R.C. #2865	L.C.R.C. #8255
Remon. tag on NW side 8" Oak S55°W 40.63'	Capped Rerod (*#21572) in SE side 14" Oak
Remon. tag on SE side 24" N25°E 7.66'	Nail & KC Remon. tag NW side 10" Oak S55°W 40.59' (m. 40.57')
	Nail & KC Remon. tag SE side 24" Stump N25°E 7.70' (m. 7.80')
	Nail & KC Remon. tag S. side 18" Oak S75°W 24.51' (m. 24.63')
	Nail & KC Remon. tag S. side 8" Maple S80°E 18.16' (m. 18.17')
	Nail & KC Remon. tag W. side 8" Maple S10°W 20.25'

The selected location is accepted by me and is generally accepted by professional surveyors as the best available evidence of the position of the original corner.

C. Description of monument for corner and accessories established to perpetuate locating the position of the corner:

K-5 Set a Kent County Remon. Cap on Capped Iron

- Nail & K.C. remon. tag on NW side 10" Oak S 55° W 40.57'
- Nail & K.C. remon. tag on SE side 24" stump N 25° E 7.80'
- Nail & K.C. remon. tag on S side 18" Oak S 75° W 24.63'
- Nail & K.C. remon. tag on S side 8" Maple S 80° E 18.17'
- Nail & K.C. remon. tag on W side 8" Maple S 10° W 20.25'
- On fence corner running W & N



Signed by Randy J. Kolehouse Date 2/19/98
 EARTH TECH
 Surveyor's Michigan License No. 25854