

\$7.00
\$2.00

MAR 08 1999

LAND CORNER RECORDATION CERTIFICATE
Filing Requirement of Act 74, Mich. P.A. 1970
KENT COUNTY REMONUMENTATION

STATE OF MICHIGAN
COUNTY OF KENT
RECEIVED FOR RECORDS
98 OCT 23 AM 9:58

REG. OF DEEDS
Lucy Stand

10807

Register of Deeds Stamp & File Number

For corners in SECTION _____

Kent (County) Located in: Vergennes Township Corner Code #

1. Public Land Survey T 7N R 9W K-6

2. Property Controlling in Section S _____ T _____ R _____

3. Miscellaneous Property in Sec. S _____ T _____ R _____

4. Lot No. _____, Recorded Plat _____

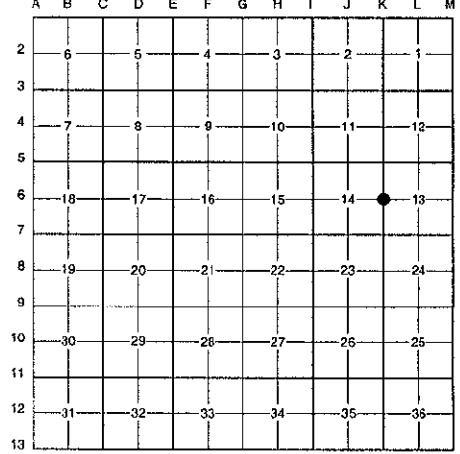
5. Private Claims _____

I, Randy Kolehouse, in a field survey on January 13 19 98, do hereby certify that under requirements of P.A. 74 Michigan P.A. of 1970, the corner points mentioned in lines 1 and 2 above were in conformance with regulations and rules therefore as required in the current manual of survey instructions of the United States Department of the interior, Bureau of Land Management or by a decree of a Court of Law and/or that the corner points mentioned in lines 3, 4 and 5 above were in conformance with the rules of the Michigan Board of Land Surveyors or by a Decree of a Court of Law; established, re-established, monumented, re-monumented, recovered, found as expressed below:

NOTE: Not more than 4 corners, all in the same town and range, may be recorded on this certificate.

A. Description of original monument and accessories and/or subsequent restoration:

K-6	1838	G.L.O. Notes	N. Brookfield	Set Post
	1875	Survey	Skeels	Post at Corner
	1984	L.C.R.C. #3810	T. Chettleburgh	Fnd. 1/2" Iron Bar / Set K.C. Monument
	1995	L.C.R.C. #8256	William Byl	K.C. Monument



This corner was originally approved by the Kent County Remonumentation Peer Group and monumented by T. Chettleburgh on 3/7/84 and was recorded per L.C.R.C. #3810.

P.A. 345 1990 KENT COUNTY
PEER APPROVED 2/19/98
CHAIRMAN T. Chettleburgh

B. Description of corner evidence found and/or method applied in restoring or reestablishing corner:

K-6 Found a Standard Kent County Monument on the C/L of Downes Street (gravel) running East and West, on line of a tree row running North and South, per L.C.R.C.'s #3810 and #8256 as set by T. Chettleburgh in place of a 1/2" iron bar he found which checked a 1875 survey by Skeels.

L.C.R.C. #3810

L.C.R.C. #8256

South face of Angle Iron Cor Fence Post N3E 29.11'	S. face of angle iron fence post (leaning) N03°E 29.20' (m. 29.23')
Nail in SE side Power Pole N65E 82.45'	Nail & KC Remon. tag S. side 22" W. Cherry Stump N75°E 52.04' (m. 52.08')
Nail in S side 22" W Cherry N75E 51.98'	Nail & KC Remon. tag NE side Power Pole (newer) S50°E 197.45' (197.47')
Nail in NE side Power Pole S44E 199.90'	Nail & KC Remon. tag NW side 20" Oak S55°W 29.15' (m. 29.17')
Nail in NW side 15" Oak S55W 29.09'	Nail & KC Remon. tag S. side 16" Oak N65°E 34.17' (m. 34.20')
	Capped Re-rod (Nederveld) S00°E 33.01' (m. 33.03')

The selected location is accepted by me and is generally accepted by professional surveyors as the best available evidence of the position of the original corner.

C. Description of monument for corner and accessories established to perpetuate locating the position of the corner:

- K-6 Standard Kent County Monument
- Nail & K.C. remon. tag on S side 22" W. Cherry stump N 75° E 52.08'
 - S face of angle iron fence post (leaning) N 03° E 29.23'
 - Nail & K.C. remon. tag on NE side P. pole S 50° E 197.47'
 - Nail & K.C. remon. tag on NW side 20" Oak S 55° W 29.17'
 - Nail & K.C. remon. tag on S side 16" Oak N 65° E 34.20'
 - On C/L gravel road running E-W
 - On tree row running N-S



Signed by Randy J. Kolehouse Date 9-1-98

Surveyor's Michigan License No. 25854