

\$7.00
\$2.00

MAR 08 1999

SECTION

LAND CORNER RECORDATION CERTIFICATE
Filing Requirement of Act 74, Mich. P.A. 1970
KENT COUNTY REMONUMENTATION

STATE OF MICHIGAN
COUNTY OF KENT
RECEIVED FOR RECORD
38 OCT 23 AM 9:58
REG. OF DEEDS
David Stand

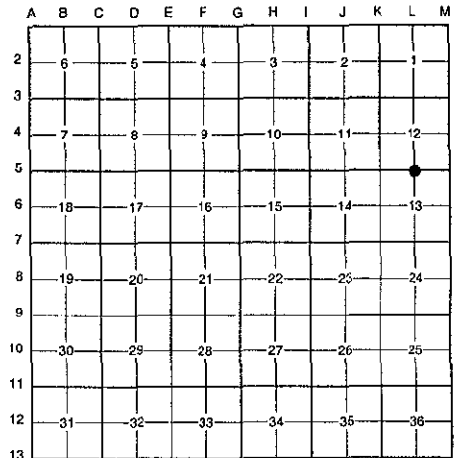
10814

Register of Deeds Stamp & File Number

For corners in

Kent (County)	Located in: Vergennes Township	Corner Code #
1. Public Land Survey	T <u>7N</u> R <u>9W</u>	<u>L-5</u>
	T _____ R _____	_____
	T _____ R _____	_____
	T _____ R _____	_____
2. Property Controlling in Section	S _____ T _____ R _____	_____
	S _____ T _____ R _____	_____
3. Miscellaneous Property in Sec.	S _____ T _____ R _____	_____
	S _____ T _____ R _____	_____

- 4. Lot No. _____ ; Recorded Plat _____
- 5. Private Claims _____



I, Randy Kolehouse, in a field survey on January 7 19 98, do hereby certify that under requirements of P.A. 74 Michigan P.A. of 1970, the corner points mentioned in lines 1 and 2 above were in conformance with regulations and rules therefore as required in the current manual of survey instructions of the United States Department of the interior, Bureau of Land Management or by a decree of a Court of Law and/or that the corner points mentioned in lines 3, 4 and 5 above were in conformance with the rules of the Michigan Board of Land Surveyors or by a Decree of a Court of Law; established, re-established, monumented, re-monumented, recovered, found as expressed below:

NOTE: Not more than 4 corners, all in the same town and range, may be recorded on this certificate.

A. Description of original monument and accessories and/or subsequent restoration:

L-5	1838	G.L.O. Notes	N. Brookfield	Set Post
	1938	Witness Map	K.C. Surveyor	1" Iron
	1986	L.C.R.C. #4474	T. Chettleburgh	Fnd. Iron Pipe / Set K.C. Monument
	1995	L.C.R.C. #8267	William Byl	K.C. Monument

P.A. 345 1990 KENT COUNTY
PEER APPROVED 2/19/98
CHAIRMAN Randy Kolehouse

This corner was originally approved by the Kent County Remonumentation Peer Group and monumented by T. Chettleburgh on 4/1/86 and was recorded per L.C.R.C. #4474.

B. Description of corner evidence found and/or method applied in restoring or reestablishing corner:

L-5 Found a Standard Kent County Monument on the C/L of Fallasburg Park Road (bit.) running North and South, on line of a tree row running West, per L.C.R.C.'s #4474 and #8267 as set by T. Chettleburgh in place of a 1" iron he found which checked the K.C. Surveyor's records.

L.C.R.C. #4474

- Nail in West side 21" Oak N22°E 91.70'
- Nail in SW side Power Pole S44°E 124.95'
- Nail in West side 15" Oak S7°E 157.40'
- Nail in North side 39" Oak N88°W 98.62'

L.C.R.C. #8267

- Nail & KC Remon. tag W. side 28" Oak N22°E 91.69' (m. 91.72')
- Nail & KC Remon. tag SW side P. Pole S44°E 124.95' (m. 124.99')
- Nail & KC Remon. tag W. side 21" Oak S07°E 157.42' (m. 157.50')
- Nail & KC Remon. tag N. side 48" Oak N88°W 98.67' (m. 98.70')
- Nail & KC Remon. tag N. side P. Pole N65°W 56.29' (m. 56.81')

The selected location is accepted by me and is generally accepted by professional surveyors as the best available evidence of the position of the original corner.

C. Description of monument for corner and accessories established to perpetuate locating the position of the corner:

- L-5 Standard Kent County Monument
- Nail & K.C. remon. tag on W side 28" Oak N 22° E 91.72'
- Nail & K.C. remon. tag on SW side P. pole S 44° E 124.99'
- Nail & K.C. remon. tag on W side 21" Oak S 07° E 157.50'
- Nail & K.C. remon. tag on N side 48" Oak N 88° W 98.70'
- Nail & K.C. remon. tag on N side P. pole N 65° W 56.81'
- On C/L on bit. road running N-S
- On tree row running W



Signed by Randy J. Kolehouse Date 9-1-98

EARTH TECH

Surveyor's Michigan License No. 25854