

MAR 08 1999

SECTION

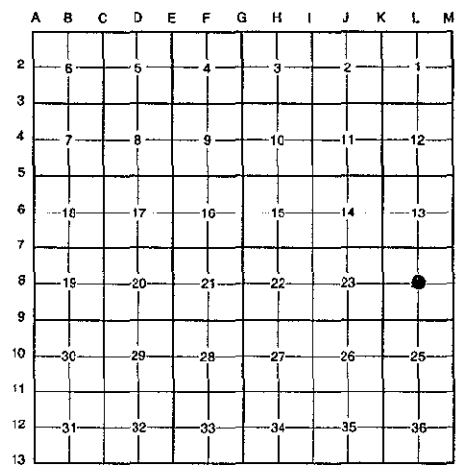
LAND CORNER RECORDATION CERTIFICATE
Filing Requirement of Act 74, Mich. P.A. 1970
KENT COUNTY REMONUMENTATION

\$7.00
\$2.00
For corners in

Form with fields for Kent (County), Located in: Vergennes Township, Corner Code #, and numbered sections 1-5 for survey details.

REG. OF DEEDS stamp with date 98 DEC 14 AM 8:00, file number 11038, and signature.

I, Randy Kolehouse, in a field survey on January 9 19 98, do hereby certify that under requirements of P.A. 74 Michigan P.A. of 1970, the corner points mentioned in lines 1 and 2 above were in conformance with regulations and rules therefore as required in the current manual of survey instructions of the United States Department of the interior, Bureau of Land Management or by a decree of a Court of Law and/or that the corner points mentioned in lines 3, 4 and 5 above were in conformance with the rules of the Michigan Board of Land Surveyors or by a Decree of a Court of Law; established, re-established, monumented, re-monumented, recovered, found as expressed below:



NOTE: Not more than 4 corners, all in the same town and range, may be recorded on this certificate.

Table A: Description of original monument and accessories and/or subsequent restoration. Includes columns for date, survey name, engineer, and monument type.

P.A. 345 1990 KENT COUNTY PEER APPROVED 1/24/98 CHAIRMAN Harry Huber

This corner was originally approved by the Kent County Remonumentation Peer Group and monumented by John Bueche on 10/2/89 and was recorded per L.C.R.C. #5233.

Description of corner evidence found and/or method applied in restoring or reestablishing corner: Found a Standard Kent County Monument 200' +/- West of the C/L of Montcalm (gravel) running North and South and 80' +/- South of a fence line running East and West per L.C.R.C.'s #5233 and #8269 as set by John Bueche. K.C. monument is 17.81' East and 0.00' North of the intersection of 1/4 lines. Accepted monument as Center of Section.

Table comparing L.C.R.C. #5233 and #8269 monument details, including bearings and distances for iron, cedar, and oak monuments.

The selected location is accepted by me and is generally accepted by professional surveyors as the best available evidence of the position of the original corner.

Description of monument for corner and accessories established to perpetuate locating the position of the corner: Standard Kent County Monument. Includes list of monument tags and bearings.

Signed by Randy J. Kolehouse, Earth Tech, Date, Surveyor's Michigan License No. 25854

