

MAR 08 1999

LAND CORNER RECORDATION CERTIFICATE
Filing Requirement of Act 74, Mich. P.A. 1970
KENT COUNTY REMONUMENTATION

SECTION

For corners in

Table with columns: Kent (County), Located in: Vergennes Township, Corner Code #. Rows include Public Land Survey, Property Controlling in Section, and Miscellaneous Property in Sec.

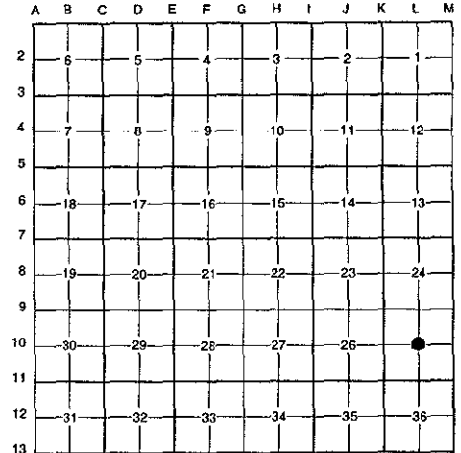
STATE OF MICHIGAN
COUNTY OF KENT
RECEIVED FOR RECORD
38 DEC 14 AM 8:00
REG. OF DEEDS

11039

Register of Deeds Stamp & File Number

4. Lot No. , Recorded Plat
5. Private Claims

I, Randy Kolehouse, in a field survey on January 8 19 98, do hereby certify that under requirements of P.A. 74 Michigan P.A. of 1970, the corner points mentioned in lines 1 and 2 above were in conformance with regulations and rules therefore as required in the current manual of survey instructions of the United States Department of the interior, Bureau of Land Management or by a decree of a Court of Law and/or that the corner points mentioned in lines 3, 4 and 5 above were in conformance with the rules of the Michigan Board of Land Surveyors or by a Decree of a Court of Law; established, re-established, monumented, re-monumented, recovered, found as expressed below:



NOTE: Not more than 4 corners, all in the same town and range, may be recorded on this certificate.

A. Description of original monument and accessories and/or subsequent restoration:

L-10 This corner was not originally set by the G.L.O.

Table with 4 columns: Year, L.C.R.C. #, Name, Monument Type. Rows: 1977 C. Hay Iron and Cap; 1989 John Bueche Fnd. Capped Iron / Set K.C. Monument; 1995 William Byl K.C. Monument

P.A. 345 1990 KENT COUNTY
PEER APPROVED 12/3/98

CHAIRMAN Randy Kolehouse

This corner was originally approved by the Kent County Remonumentation Peer Group and monumented by John Bueche on 10/10/89 and was recorded per L.C.R.C. #5234.

B. Description of corner evidence found and/or method applied in restoring or reestablishing corner:

L-10 Found a Standard Kent County Monument 2.0' North of the C/L of Flat River Drive (bit.) running East and West per L.C.R.C.'s #5234 and #8273 as set by John Bueche in place of a capped iron he found 16.37' North and 1.65' East of the intersection of 1/4 lines which checked L.C.R.C. #1062. Accepted monument as Center of Section.

L.C.R.C. #5234

L.C.R.C. #8273

Nail & Remon tag W side of 28" Oak S 45° W 40.16'
Nail & Remon tag W side of 24" Oak S 25° W 30.04'
Nail & Remon tag E side of 30" Oak S 45° E 39.28'

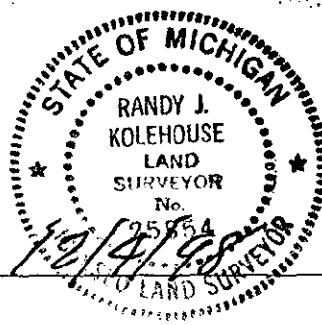
Nail & KC Remon. tag W. side 28" Oak S45°W 40.18' (m. 40.12')
Nail & KC Remon. tag W. side 24" Oak S25°W 30.04' (m. 30.06')
Nail & KC Remon. tag E. side 30" Oak S45°E 39.04' (m. 39.03')
Nail & KC Remon. tag E. side 20" Oak N00°W 38.62' (m. 38.60')

The selected location is accepted by me and is generally accepted by professional surveyors as the best available evidence of the position of the original corner.

C. Description of monument for corner and accessories established to perpetuate locating the position of the corner:

L-10 Standard Kent County Monument

Nail & K.C. remon. tag on W side 28" Oak S 45° W 40.12'
Nail & K.C. remon. tag on W side 24" Oak S 25° W 30.06'
Nail & K.C. remon. tag on E side 30" Oak S 45° E 39.03'
Nail & K.C. remon. tag on E side 20" Oak due North 38.60'
C/L of bit. road running E-W, South 2.0'



Signed by Randy J. Kolehouse Date 12/14/98

EARTH TECH

Surveyor's Michigan License No. 25854