

SURVEY & REMONUMENTATION

MAR 03 1998

**\$7.00
\$2.00**

SECTION

**LAND CORNER RECORDATION CERTIFICATE
Filing Requirement of Act 74, Mich. P.A. 1970
KENT COUNTY REMONUMENTATION**

For corners in

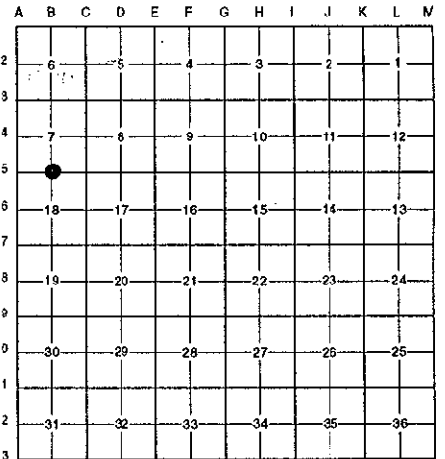
Kent (County)	Located in:	Ada Township	Corner Code #
1. Public Land Survey	T <u>7N</u>	R <u>10W</u>	<u>B-5</u>
	T _____	R _____	_____
	T _____	R _____	_____
	T _____	R _____	_____
2. Property Controlling In Section	S _____ T _____	R _____	_____
	S _____ T _____	R _____	_____
3. Miscellaneous Property in Sec.	S _____ T _____	R _____	_____
	S _____ T _____	R _____	_____
4. Lot No. _____, Recorded Plat _____			
5. Private Claims _____			

STATE OF MICHIGAN
COUNTY OF KENT
RECEIVED FOR RECORD
97 NOV 14 AM 9:00
REG. OF DEEDS
David Stand

10309

Register of Deeds Stamp & File Number

I, Randy Kolehouse, in a field survey on August 8 19 97, do hereby certify that under requirements of P.A. 74 Michigan P.A. of 1970, the corner points mentioned in lines 1 and 2 above were in conformance with regulations and rules therefore as required in the current manual of survey instructions of the United States Department of the interior, Bureau of Land Management or by a decree of a Court of Law and/or that the corner points mentioned in lines 3, 4 and 5 above were in conformance with the rules of the Michigan Board of Land Surveyors or by a Decree of a Court of Law; established, re-established, monumented, re-monumented, recovered, found as expressed below:



NOTE: Not more than 4 corners, all in the same town and range, may be recorded on this certificate.

A. Description of original monument and accessories and/or subsequent restoration:

B-5	1831	G.L.O. Notes	Mullett	Set Post
	1983	L.C.R.C. #3690	Glaza & Associates	"T" Iron
	1984	L.C.R.C. #3867	M. Rosema	Fnd. "T" Iron / Set K.C. Monument
	1989	L.C.R.C. #5104	T. Chettleburgh	K.C. Monument

This corner was originally approved by the Kent County Remonumentation Peer Group and monumented by M. Rosema on 7/16/84 and was recorded per L.C.R.C. #3867.

B. Description of corner evidence found and/or method applied in restoring or reestablishing corner:

B-5 Found a Standard Kent County Monument 1.0' ± below ground level 400' ± East of the C/L of Shady Drive (gravel) running North and South and 5' North of a fence line running East and West per L.C.R.C.'s #3867 and #5104 as set by M. Rosema in place of a "T" iron he found which checked L.C.R.C. #3960.

L.C.R.C. #3867

L.C.R.C. #5104

- Nail and remon. tag in NE side 6" Ash - S24°E 5.00'
- Nail and remon. tag in E side 12" Oak - S28°W 37.70'
- Nail and remon. tag in NE side 12" Maple - N18°W 33.29'
- Nail and remon. tag in E side twin 30" Maple - N20°E 27.20'
- Nail and remon. tag in S side 6" Ash - N68°E 25.68'

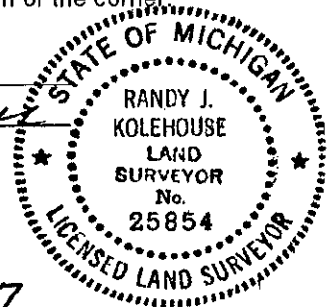
- K. C. Remon. Tag & Nail East side 33" Maple N 19° E 27.18' (m. 27.19')
- K. C. Remon. Tag & Nail South side 8" Ash N 68° E 25.66'
- K. C. Remon. Tag & Nail Northeast side 6" Ash S 27° E 4.99'
- K. C. Remon. Tg & Nail East side 18" Maple S 10° W 58.17' (m. 58.15')
- K. C. Remon. Tag & Nail East side 13" Maple S 29° W 37.67' (m. 37.66')
- K. C. Remon. Tag & Nail Northeast side 14" Maple N 17° W 33.25'

The selected location is accepted by me and is generally accepted by professional surveyors as the best available evidence of the position of the original corner.

C. Description of monument for corner and accessories established to perpetuate locating the position of the corner:

- B-5 Standard Kent County Monument
- Nail & K.C. remon. tag on E side 33" Maple N 19° E 27.19'
 - Nail & K.C. remon. tag on S side 8" Ash N 68° E 25.66'
 - Nail & K.C. remon. tag on NE side 6" Ash S 27° E 4.99'
 - Nail & K.C. remon. tag on E side 18" Maple S 10° W 58.15'
 - Nail & K.C. remon. tag on E side 13" Maple S 29° W 37.66'
 - Nail & K.C. remon. tag on NE side 14" Maple N 17° W 33.25'

P.A. 345 1990 KENT COUNTY
PEER APPROVED 8/28/97
CHAIRMAN Randy Kolehouse



Signed by Randy J. Kolehouse

Date 9/23/97

Surveyor's Michigan License No. 25854