

SURVEY & REMONUMENTATION

MAR 03 1998

LAND CORNER RECORDATION CERTIFICATE Filing Requirement of Act 74, Mich. P.A. 1970 KENT COUNTY REMONUMENTATION

For corners in SECTION Kent (County) Located in: Ada Township Corner Code # B-7

1. Public Land Survey T 7N R 10W B-7
 T _____ R _____
 T _____ R _____
 T _____ R _____

2. Property Controlling in Section S _____ T _____ R _____
 S _____ T _____ R _____

3. Miscellaneous Property in Sec. S _____ T _____ R _____
 S _____ T _____ R _____

4. Lot No. _____, Recorded Plat _____

5. Private Claims _____

STATE OF MICHIGAN
COUNTY OF KENT
RECEIVED FOR RECORD
97 OCT 15 AM 8:49
REG. OF DEEDS
Luigi Bondi

10167

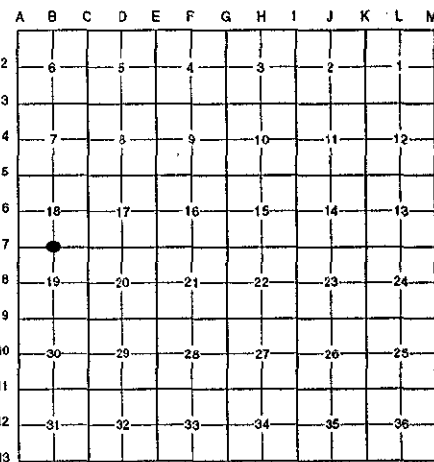
Register of Deeds Stamp & File Number

I, Randy Kolehouse, in a field survey on January 23 19 97, do hereby certify that under requirements of P.A. 74 Michigan P.A. of 1970, the corner points mentioned in lines 1 and 2 above were in conformance with regulations and rules therefore as required in the current manual of survey instructions of the United States Department of the interior, Bureau of Land Management or by a decree of a Court of Law and/or that the corner points mentioned in lines 3, 4 and 5 above were in conformance with the rules of the Michigan Board of Land Surveyors or by a Decree of a Court of Law; established, re-established, monumented, re-monumented, recovered, found as expressed below:

NOTE: Not more than 4 corners, all in the same town and range, may be recorded on this certificate.

A. Description of original monument and accessories and/or subsequent restoration:

B-7	1831	G.L.O. Notes	Mullett	Set Post	P.A. 345 1990 KENT COUNTY
	N/A	Witness Map	K.C. Surveyor	Stake & Stone	PEER APPROVED 5/27/97
	1983	L.C.R.C. #3712	Moore & Bruggink	"T" Iron	CHAIRMAN <i>Handwritten Signature</i>
	1984	L.C.R.C. #3923	Moore & Bruggink	Fnd. "T" Iron / Set K.C. Monument	
	1989	L.C.R.C. #5105	T. Chettleburgh	K.C. Monument	



This corner was originally approved by the Kent County Remonumentation Peer Group and monumented by J. McCloskey on 10/5/84 and was recorded per L.C.R.C. #3923.

B. Description of corner evidence found and/or method applied in restoring or reestablishing corner:

B-7 Found a Standard Kent County Monument 40' East of the C/L of Grand River Drive (bit.) running North and South on line of a fence line running West per L.C.R.C.'s #3923 and #5105 as set by Moore & Bruggink in place of a "T" iron they found which checked L.C.R.C. #3712 and the K.C. Surveyor's records.

L.C.R.C. #3923

L.C.R.C. #5105

R.R. spike in C/L Grand River Drive West 42.02'
 Nail & tag in 20" Maple S 45° E 32.07'
 Nail & tag in 20" Maple S 20° E 64.19'
 NW Cor House Foundation S 55° E 71.51'
 Nail & tag in 16" Pine S 40° W 69.73'

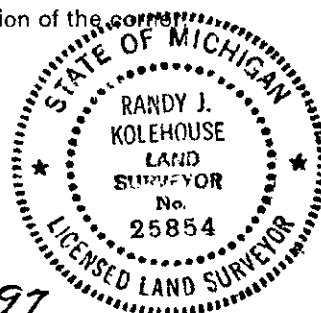
Northwest corner house foundation (Hse #1260) S 80° E 71.48'
 K.C. Remon. Tag & Nail Southwest side 18" Maple S 67° E 32.07' (m. 32.34')
 K.C. Remon. Tag & Nail Southwest side 17" Maple S 41° E 64.19'
 K.C. Remon. Tag & Nail Northwest side 15" Pine S 46° W 70.33'
 R.R. spike in centerline Grand River Drive N 90° W 42.02' (m. 42.06')
 K.C. Remon. Tag & Nail West side Multi. 4" Cedar N 04° W 69.04' (m. 69.12')

The selected location is accepted by me and is generally accepted by professional surveyors as the best available evidence of the position of the original corner.

C. Description of monument for corner and accessories established to perpetuate locating the position of the corner:

B-7 Standard Kent County Monument

NW corner hse. fndtn. (#1260) S 80° E 71.48'
 Nail & K.C. remon. tag on SW side 18" Maple S 67° E 32.34'
 Nail & K.C. remon. tag on SW side 18" Maple S 41° E 64.19'
 Nail & K.C. remon. tag on NW side 15" Pine S 46° W 70.33'
 R.R. spike on center line bit. road N 90° W 42.06'
 Nail & K.C. remon. tag on W side Multi 8" Cedar N 04° W 69.12'



Signed by *Randy J. Kolehouse* Date 8-1-97

EARTH TECH

Surveyor's Michigan License No. 25854