

**SURVEY & REMONUMENTATION**

MAR 03 1998

**LAND CORNER RECORDATION CERTIFICATE**  
**Filing Requirement of Act 74, Mich. P.A. 1970**  
**KENT COUNTY REMONUMENTATION**

STATE OF MICHIGAN  
 COUNTY OF KENT  
 RECEIVED FOR RECORD  
 97 OCT 15 AM 8:49  
 REG. OF DEEDS  
*W. J. Hubert*

**SECTION**

For corners in

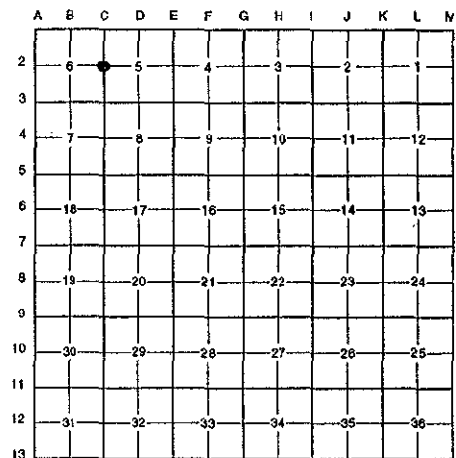
<u>Kent</u> (County)	Located in: <u>Ada</u> Township	Corner Code # <u>C-2</u>
1. Public Land Survey	T <u>7N</u> R <u>10W</u>	<u>C-2</u>
	T _____ R _____	_____
	T _____ R _____	_____
	T _____ R _____	_____
2. Property Controlling in Section	S _____ T _____ R _____	_____
	S _____ T _____ R _____	_____
3. Miscellaneous Property in Sec.	S _____ T _____ R _____	_____
	S _____ T _____ R _____	_____

10171

Register of Deeds Stamp & File Number

4. Lot No. \_\_\_\_\_, Recorded Plat \_\_\_\_\_  
 5. Private Claims \_\_\_\_\_

I, Randy Kolehouse, in a field survey on March 31 19 97, do hereby certify that under requirements of P.A. 74 Michigan P.A. of 1970, the corner points mentioned in lines 1 and 2 above were in conformance with regulations and rules therefore as required in the current manual of survey instructions of the United States Department of the Interior, Bureau of Land Management or by a decree of a Court of Law and/or that the corner points mentioned in lines 3, 4 and 5 above were in conformance with the rules of the Michigan Board of Land Surveyors or by a Decree of a Court of Law; established, re-established, monumented, re-monumented, recovered, found as expressed below:



**NOTE: Not more than 4 corners, all in the same town and range, may be recorded on this certificate.**

A. Description of original monument and accessories and/or subsequent restoration:

C-2	1831	G.L.O. Notes	Mullett	Set Post
	1940	Witness Map	K.C. Surveyor	Iron & Stone
	1979	L.C.R.C. #1263	Williams & Works	Concrete Nail in Asphalt
	1982	L.C.R.C. #3152	G. Hackbardt	Frnd. 6" Concrete Nail / Set K.C. Monument
	1989	L.C.R.C. #5109	T. Chettleburgh	K.C. Monument

P.A. 345 1990 KENT COUNTY  
 PEER APPROVED 5/22/97  
 CHAIRMAN Harry Hubert

This corner was originally approved by the Kent County Remonumentation Peer Group and monumented by G. Hackbardt on 6/15/82 and was recorded per L.C.R.C. #3152.

B. Description of corner evidence found and/or method applied in restoring or reestablishing corner:

C-2 Found a Standard Kent County Monument 1.5' West of the C/L of Pettis Avenue (bit.) running North and South on line of a tree row running East and West per L.C.R.C.'s #3152 and #5109 as set by G. Hackbardt in place of a 6" concrete nail he found over a "T" iron over a 1" crimped iron which checked L.C.R.C. #1263 and the K.C. Surveyor's records.

L.C.R.C. #3152

L.C.R.C. #5109

K.C. Monument Nail & Tag CP Pole N 85° W 52.63'  
 K.C. Monument Nail & Tag 7" Hickory S 55° E 32.81'  
 K.C. Monument Nail & Tag 10" Pine S 25° W 73.38'

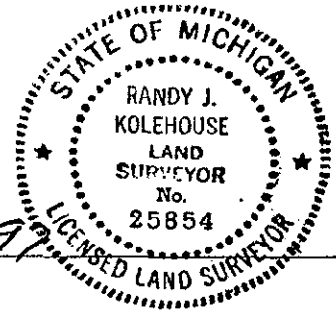
K.C. Remon. Tag & Nail Southeast side 20" Oak N 53° E 42.61' (m. 42.64')  
 K.C. Remon. Tag & Nail Northwest side 27" Hickory N 80° E 34.64' (m. 34.64')  
 K.C. Remon. Tag & Nail Northeast side 10" Hickory S 50° E 32.81' (m. 32.83')  
 K.C. Remon. Tag & Nail Ease side 10" Pine S 24° W 73.42' (m. 73.47')  
 K.C. Remon Tag & Nail South side Power Pole N 84° W 52.64' (m. 52.69')

The selected location is accepted by me and is generally accepted by professional surveyors as the best available evidence of the position of the original corner.

C. Description of monument for corner and accessories established to perpetuate locating the position of the corner:

C-2 Standard Kent County Monument

- Nail & K.C. remon. tag on SE side 20" Oak N 53° E 42.64'
- Nail & K.C. remon. tag on NW side 26" Hickory N 80° E 34.64'
- Nail & K.C. remon. tag on NE side 12" Hickory S 50° E 32.83'
- Nail & K.C. remon. tag on E side 10" Pine S 24° W 73.47'
- Nail & K.C. remon. tag on S side P. pole N 84° W 52.69'



Signed by Randy J. Kolehouse  
 EARTH TECH

Date 8-1-97

Surveyor's Michigan License No. 25854