

**SURVEY & REMONUMENTATION**

MAR 03 1998

**SECTION**

**LAND CORNER RECORDATION CERTIFICATE**  
**Filing Requirement of Act 74, Mich. P.A. 1970**  
**KENT COUNTY REMONUMENTATION**

For corners in

Kent  
 (County)

Located in: Ada Township

Corner Code #

- |                                    |             |              |            |
|------------------------------------|-------------|--------------|------------|
| 1. Public Land Survey              | T <u>7N</u> | R <u>10W</u> | <u>C-4</u> |
|                                    | T _____     | R _____      | _____      |
|                                    | T _____     | R _____      | _____      |
|                                    | T _____     | R _____      | _____      |
| 2. Property Controlling in Section | S _____     | T _____      | R _____    |
|                                    | S _____     | T _____      | R _____    |
| 3. Miscellaneous Property in Sec.  | S _____     | T _____      | R _____    |
|                                    | S _____     | T _____      | R _____    |

4. Lot No. \_\_\_\_\_, Recorded Plat \_\_\_\_\_
5. Private Claims \_\_\_\_\_

REC. OF DEEDS

*Lucy Standa*

97 OCT 15 AM 8:49

STATE OF MICHIGAN  
 COUNTY OF KENT  
 RECEIVED FOR RECORD

**10173**

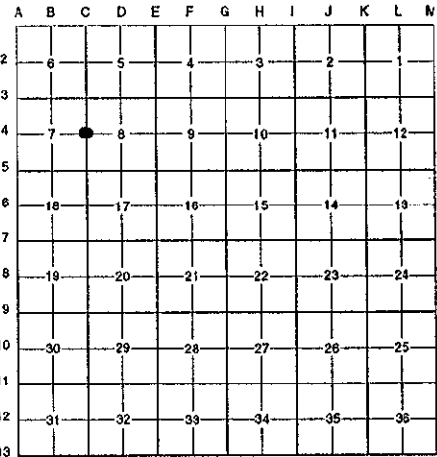
Register of Deeds Stamp & File Number

I, Randy Kolehouse, in a field survey on March 31 19 97, do hereby certify that under requirements of P.A. 74 Michigan P.A. of 1970, the corner points mentioned in lines 1 and 2 above were in conformance with regulations and rules therefore as required in the current manual of survey instructions of the United States Department of the Interior, Bureau of Land Management or by a decree of a Court of Law and/or that the corner points mentioned in lines 3, 4 and 5 above were in conformance with the rules of the Michigan Board of Land Surveyors or by a Decree of a Court of Law; established, re-established, monumented, re-monumented, recovered, found as expressed below:

**NOTE: Not more than 4 corners, all in the same town and range, may be recorded on this certificate.**

**A. Description of original monument and accessories and/or subsequent restoration:**

C-4	1831	G.L.O. Notes	Mullett	Set Post
	1963	Witness Map	K.C. Surveyor	Monument Box
	1973	L.C.R.C. #502	Williams & Works	1/2" Iron in Monument Box
	1981	L.C.R.C. #2546	J. Bueche	Fnd. 3/4" x 18" Iron / Set K.C. Monument in Monument Box
	1989	L.C.R.C. #5111	T. Chettleburgh	K.C. Monument



This corner was originally approved by the Kent County Remonumentation Peer Group and monumented by J. Bueche on 12/12/81 and was recorded per L.C.R.C. #2546.

**B. Description of corner evidence found and/or method applied in restoring or reestablishing corner:**

C-4 Found a Standard Kent County Monument in a monument box at the C/L intersection of Pettis Avenue (bit.) running North and South and Knapp Road (bit.) running East and West per L.C.R.C.'s #2546 and #5111 as set by J. Bueche in place of a 3/4" x 18" iron, a 1" x 30" solid iron and a 2-1/2" x 44" iron he found in a monument box which checked L.C.R.C. #502 and the K.C. Surveyor's records.

L.C.R.C. #2546

L.C.R.C. #5111

NW cor. bldg. (wood) S 50° E 89.89'	Northwest Corner Wood Building S 48° E 89.79' (m. 89.84')
NE cor. conc. porch to hse. S 43° W 130.35'	Northwest Corner Concrete Feed Trough Wall S 29° E 132.02' (m. 132.91')
K. C. Remon. tag & nail in East side 26" Pine S 27° W 111.55'	K. C. Remon. Tag & Nail East side 26" Spruce S 29° W 111.52' (m. 111.63')
NW cor. conc. wall S 26° E 132.89'	Northeast Corner Concrete Porch to House S 41° W 130.26' (m. 130.4')
C/L X blktp. rds. N & S - E & S (E & W)	K. C. Remon. Tag & Nail North side 24" Hickory S 69° W 65.60' (m. 65.65')
	K. C. Remon. Tag & Nail Northeast side Street Light Pole N 41° W 44.13' (m. 44.19')

The selected location is accepted by me and is generally accepted by professional surveyors as the best available evidence of the position of the original corner.

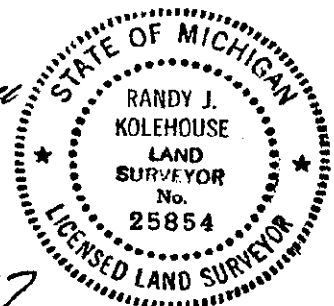
**C. Description of monument for corner and accessories established to perpetuate locating the position of the corner:**

- C-4 Standard Kent County Monument in a Monument Box
- NW cor. wood bldg. S 48° E 89.84'
  - NW cor. conc. feed trough S 29° E 132.91'
  - Nail & K.C. remon. tag on E side 28" Spruce S 29° W 111.63'
  - Nail & K.C. remon. tag on N side 24" Maple S 69° W 65.65'
  - Nail & K.C. remon. tag on NE side Light pole N 41° W 44.19'
  - 1/2" rebar in conc. mon. N 45° E 55.07'

P.A. 345 1990 KENT COUNTY

PEER APPROVED 5/22/97

CHAIRMAN J. Bueche



Signed by Randy J. Kolehouse Date 8-1-97

EARTH TECH

Surveyor's Michigan License No. 25854