

SURVEY & REMONUMENTATION

MAR 03 1998

SECTION

LAND CORNER RECORDATION CERTIFICATE
Filing Requirement of Act 74, Mich. P.A. 1970
KENT COUNTY REMONUMENTATION

For corners in

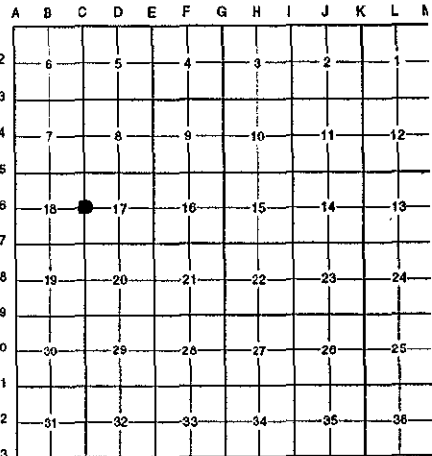
Kent (County)	Located in:	Ada Township	Corner Code #
1. Public Land Survey	T <u>7N</u>	R <u>10W</u>	<u>C-6</u>
	T _____	R _____	_____
	T _____	R _____	_____
	T _____	R _____	_____
2. Property Controlling in Section	S _____	T _____	R _____
	S _____	T _____	R _____
3. Miscellaneous Property in Sec.	S _____	T _____	R _____
	S _____	T _____	R _____

STATE OF MICHIGAN
 COUNTY OF KENT
 REGISTERED FOR RECORD
 97 OCT 15 AM 8:49
 REG. OF DEEDS
W. J. Bond

10175

Register of Deeds Stamp & File Number

4. Lot No. _____, Recorded Plat _____
 5. Private Claims _____



I, Randy Kolehouse, in a field survey on January 30 19 97, do hereby certify that under requirements of P.A. 74 Michigan P.A. of 1970, the corner points mentioned in lines 1 and 2 above were in conformance with regulations and rules therefore as required in the current manual of survey instructions of the United States Department of the interior, Bureau of Land Management or by a decree of a Court of Law and/or that the corner points mentioned in lines 3, 4 and 5 above were in conformance with the rules of the Michigan Board of Land Surveyors or by a Decree of a Court of Law; established, re-established, monumented, re-monumented, recovered, found as expressed below:

NOTE: Not more than 4 corners, all in the same town and range, may be recorded on this certificate.

A. Description of original monument and accessories and/or subsequent restoration:

C-6	1831	G.L.O. Notes	Mullett	Set Post
	1980	L.C.R.C. #1343	C. Hay	"T" Iron
	1981	L.C.R.C. #2548	J. Bueche	Fnd. 8" "T" Iron / Set K.C. Monument
	1989	L.C.R.C. #5113	T. Chettleburgh	K.C. Monument

P.A. 345 1990 KENT COUNTY
 PEER APPROVED 5/22/97
Harry Bueche
 CHAIRMAN

This corner was originally approved by the Kent County Remonumentation Peer Group and monumented by J. Bueche on 12/12/81 and was recorded per L.C.R.C. #2548.

B. Description of corner evidence found and/or method applied in restoring or reestablishing corner:

C-6 Found a Standard Kent County Monument at the C/L of Pettis Avenue (bit.) running North and South per L.C.R.C.'s #2548 and #5113 as set by J. Bueche in place of an 8" "T" iron he found which checked L.C.R.C. #1343.

L.C.R.C. #2548

- K.C. Remon. tag & nail in East side 14" Oak S 30° W 78.93'
- K.C. Remon. tag & nail in NE side 18" Walnut N 60° W 38.61'
- K.C. Remon. tag & nail in S'ly side fence post S 65° E 31.79'

L.C.R.C. #5113

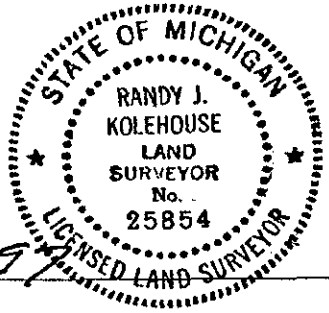
- K.C. Remon. Tag & Nail North side Telephone Pole S 75° E 32.22'
- K.C. Remon. Tag & Nail South side Fence Post S 66° E 31.78'
- K.C. Remon. Tag & Nail West side 8" Elm S 19° E 80.00'
- K.C. Remon. Tag & Nail East side 13" Oak S 30° W 78.93'
- K.C. Remon. Tag & Nail Northeast side 19" Walnut N 60° W 39.00'

The selected location is accepted by me and is generally accepted by professional surveyors as the best available evidence of the position of the original corner.

C. Description of monument for corner and accessories established to perpetuate locating the position of the corner:

C-6 Standard Kent County Monument

- Nail & K.C. remon. tag on N side T. pole S 75° E 32.22'
- Nail & K.C. remon. tag on S side fence post S 66° E 31.78'
- Nail & K.C. remon. tag on E side 13" Oak S 30° W 78.93'
- Nail & K.C. remon. tag on NE side 19" Walnut N 60° W 39.00'
- Nail & K.C. remon. tag on W side 8" Ash S 15° E 107.85'



Signed by *Randy J. Kolehouse* Date 5-1-97
 EARTH TECH

Surveyor's Michigan License No. 25854