

SURVEY & REMONUMENTATION

MAR 03 1998

SECTION

LAND CORNER RECORDATION CERTIFICATE
Filing Requirement of Act 74, Mich. P.A. 1970
KENT COUNTY REMONUMENTATION

For corners in

Kent
 (County)

Located in: Ada
 Township

Corner Code #

- 1. Public Land Survey T 7N R 10W C-9
 T R _____
 T R _____
 T R _____
- 2. Property Controlling S _____ T _____ R _____
 in Section S _____ T _____ R _____
- 3. Miscellaneous S _____ T _____ R _____
 Property in Sec. S _____ T _____ R _____

- 4. Lot No. _____, Recorded Plat _____
- 5. Private Claims _____

REG. OF DEEDS

Handwritten signature

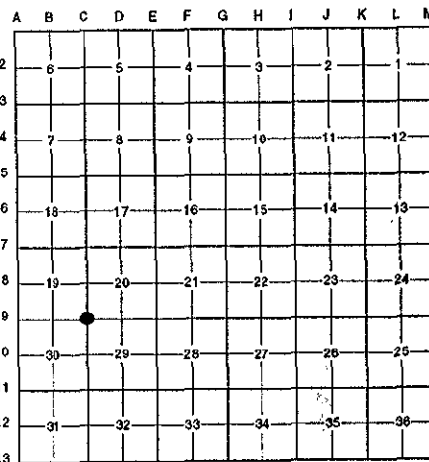
97 OCT 15 AM 8:49

STATE OF MICHIGAN
 COUNTY OF KENT
 REGISTERED FOR RECORD

10177

Register of Deeds Stamp & File Number

I, Randy Kolehouse, in a field survey on January 23 19 97, do hereby certify that under requirements of P.A. 74 Michigan P.A. of 1970, the corner points mentioned in lines 1 and 2 above were in conformance with regulations and rules therefore as required in the current manual of survey instructions of the United States Department of the interior, Bureau of Land Management or by a decree of a Court of Law and/or that the corner points mentioned in lines 3, 4 and 5 above were in conformance with the rules of the Michigan Board of Land Surveyors or by a Decree of a Court of Law; established, re-established, monumented, re-monumented, recovered, found as expressed below:



NOTE: Not more than 4 corners, all in the same town and range, may be recorded on this certificate.

A. Description of original monument and accessories and/or subsequent restoration:

C-9	1831	G.L.O. Notes	Mullet	Set Post
	1944	Witness Map	K.C. Surveyor	Iron
	1971	L.C.R.C. #10	J. Spencer	3/4" Pipe in Concrete Monument
	1981	L.C.R.C. #2500	Williams & Works	3/4" Iron
	1981	L.C.R.C. #2549	J. Bueche	Fnd. 3/4" x 18" Iron in Conc. / Set K.C. Monument
	1989	L.C.R.C. #5115	T. Chettleburgh	K.C. Monument

This corner was originally approved by the Kent County Remonumentation Peer Group and monumented by J. Bueche on 12/15/81 and was recorded per L.C.R.C. #2549.

B. Description of corner evidence found and/or method applied in restoring or reestablishing corner:

C-9 Found a Standard Kent County Monument 130' ± South of the North edge of woods in old fence line running East and West per L.C.R.C.'s #2549 and #5115 as set by J. Bueche in place of a 3/4" x 18" iron he found in concrete which checked L.C.R.C.'s #2500, #10, and the K.C. Surveyor's records.

L.C.R.C. 2549

L.C.R.C. 5115

- K.C. Remon. tag & nail in NE side 6" Pine N 35° W 27.70'
- K.C. Remon. tag & nail in South side double 8" Sassafras S 75° W 19.52'
- K.C. Remon. tag & nail in West side 16" Oak S 10° W 21.55'
- K.C. Remon. tag & nail in North side 10" Poplar S 65° E 17.87'

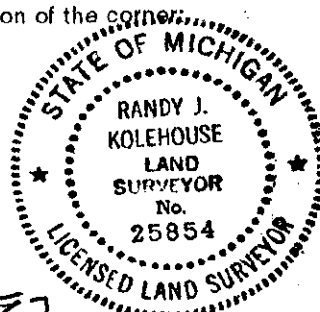
- On old Fence East & West
- K.C. Remon. Tag & Nail West side 26" Oak N 15° E 21.67' (m. 21.21')
- K.C. Remon. Tag & Nail North side 10" Poplar S 71° E 14.87'
- K.C. Remon. Tag & Nail West side 17" Oak S 04° W 21.38' (m. 21.42')
- K.C. Remon. Tag & Nail South side Twin 8" Sassafras S 80° W 19.42'
- K.C. Remon. Tag & Nail Northeast side 5" Pine N 40° W 27.65' (m. 27.74')
- Steel Fence Post in Concrete N 07° W 1.55'

The selected location is accepted by me and is generally accepted by professional surveyors as the best available evidence of the position of the original corner.

C. Description of monument for corner and accessories established to perpetuate locating the position of the corner:

C-9 Standard Kent County Monument

- Nail & K.C. remon. tag on W side 28" Oak N 15° E 21.21'
- Nail & K.C. remon. tag on N side 10" Poplar S 71° E 14.87'
- Nail & K.C. remon. tag on W side 18" Oak S 40° W 21.42'
- Nail & K.C. remon. tag on S side 10" Twin Sassafras S 80° W 19.42'
- Nail & K.C. remon. tag on NE side 6" Dead Pine N 40° W 27.74'
- Steel fence post in conc. N 07° W 1.55'



Signed by Randy J. Kolehouse Date 8-1-97

EARTH TECH

Surveyor's Michigan License No. 25854

P.A. 345 1990 KENT COUNTY

PEER APPROVED 5/22/97

CHAIRMAN Harry Hubert