

# SURVEY & REMONUMENTATION

**MAR 03 1998**

## LAND CORNER RECORDATION CERTIFICATE Filing Requirement of Act 74, Mich. P.A. 1970 KENT COUNTY REMONUMENTATION

For corners in **SECTION**

<u>Kent</u> (County)	Located in: <u>Ada</u> Township	Corner Code # <u>D-7</u>	
1. Public Land Survey	T <u>7N</u> R <u>10W</u>	<u>D-7</u>	
	T _____ R _____	_____	
	T _____ R _____	_____	
	T _____ R _____	_____	
2. Property Controlling in Section	S _____ T _____ R _____	_____	
	S _____ T _____ R _____	_____	
3. Miscellaneous Property in Sec.	S _____ T _____ R _____	_____	
	S _____ T _____ R _____	_____	
4. Lot No. _____, Recorded Plat _____			
5. Private Claims _____			

STATE OF MICHIGAN  
COUNTY OF KENT  
RECEIVED FOR RECORD

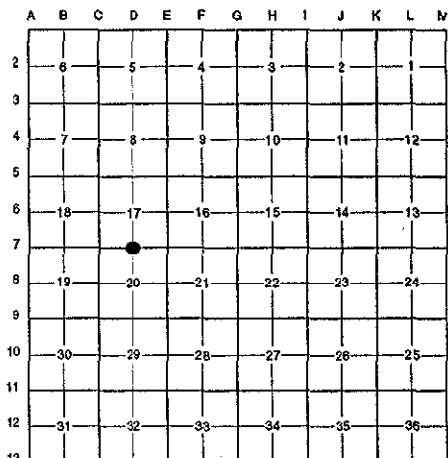
97 OCT 15 AM 8:50

REG. OF DEEDS

10182

Register of Deeds Stamp & File Number

I, Randy Kolehouse, in a field survey on January 30 19 97, do hereby certify that under requirements of P.A. 74 Michigan P.A. of 1970, the corner points mentioned in lines 1 and 2 above were in conformance with regulations and rules therefore as required in the current manual of survey instructions of the United States Department of the interior, Bureau of Land Management or by a decree of a Court of Law and/or that the corner points mentioned in lines 3, 4 and 5 above were in conformance with the rules of the Michigan Board of Land Surveyors or by a Decree of a Court of Law; established, re-established, monumented, re-monumented, recovered, found as expressed below:



**NOTE: Not more than 4 corners, all in the same town and range, may be recorded on this certificate.**

**A. Description of original monument and accessories and/or subsequent restoration:**

D-7	1831	G.L.O. Notes	Mullett	Set Post
	N/A	Notes	Williams & Works	Iron
	1984	L.C.R.C. #3871	M. Rosema	Fnd. 2" Iron / Set K.C. Monument
	1989	L.C.R.C. #5122	T. Chettleburgh	K.C. Monument

This corner was originally approved by the Kent County Remonumentation Peer Group and monumented by M. Rosema on 6/21/84 and was recorded per L.C.R.C. #3871.

**B. Description of corner evidence found and/or method applied in restoring or reestablishing corner:**

D-7 Found a Standard Kent County Monument 400' ± East of the C/L of Pettis Avenue (bit.) running Northwest and Southeast, on line of a tree row running East and West, and 1.4' South of a fence line running East and West per L.C.R.C.'s #3871 and #5122 as set by M. Rosema in place of a 2" iron he found which checked the K.C. Surveyor's records.

L.C.R.C. #3871

L.C.R.C. #5122

Nail and remon. tag in N side clump 18" W. Cherry - S 90° W 5.06'  
Nail and remon. tag in N side 7" Oak - S 59° W 33.12'  
Nail and remon. tag in N side dbl. 15" W. Cherry - S 79° E 21.37'  
Nail and remon. tag in NW side 10" Oak - S 42° E 26.44'  
E-W fence line - N 2.4'

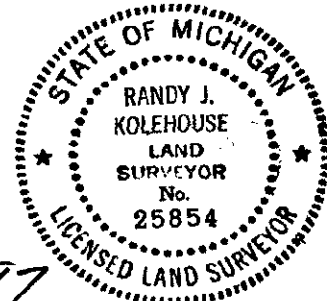
East-West fence line North 2.4'  
K. C. Remon. Tag & Nail North side dbl. 15" Stump S 75° E 21.39'  
K. C. Remon. Tag & Nail South side 12" Ash S 60° E 25.17'  
K. C. Remon. Tag & Nail Northwest side 10" Oak S 39° E 26.47'  
K. C. Remon. Tag & Nail West side 7" Oak S 31° W 20.20'  
K. C. Remon. Tag & Nail North side 7" Oak S 60° W 33.13'  
K. C. Remon. Tag & Nail North side 18" Stump S 78° W 5.06'

The selected location is accepted by me and is generally accepted by professional surveyors as the best available evidence of the position of the original corner.

**C. Description of monument for corner and accessories established to perpetuate locating the position of the corner:**

D-7 Standard Kent County Monument

Nail & K.C. remon. tag on N side double 15" Stump S 75° E 21.39'  
Nail & K.C. remon. tag on N side 12" Ash S 60° E 25.17'  
Nail & K.C. remon. tag on NW side 10" Oak S 39° E 26.51'  
Nail & K.C. remon. tag on W side 7" Oak S 31° W 20.20'  
Nail & K.C. remon. tag on N side 7" Oak S 60° W 33.13'  
Nail & K.C. remon. tag on N side 18" Stump S 78° W 5.06'



Signed by Randy J. Kolehouse Date 8-1-97  
EARTH TECH

Surveyor's Michigan License No. 25854

P.A. 345 1990 KENT COUNTY  
PEER APPROVED 5/22/97  
CHAIRMAN Harry Huber