

FEB 14 1997

COMMISSION

KENT COUNTY REMONUMENTATION

LAND CORNER RECORDATION CERTIFICATE
Filing Requirement of Act 74, Mich. P.A. 1970

For corners in

KENT COUNTY

(County)

Located In:

Corner Code #

- | | | |
|------------------------------------|--------------------------|-------|
| 1. Public Land Survey | T <u>7N</u> R <u>10W</u> | D-13 |
| | T ___ R ___ | _____ |
| | T ___ R ___ | _____ |
| | T ___ R ___ | _____ |
| 2. Property Controlling in Section | S ___ T ___ R ___ | _____ |
| | S ___ T ___ R ___ | _____ |
| 3. Miscellaneous Property in Sec. | S ___ T ___ R ___ | _____ |
| | S ___ T ___ R ___ | _____ |

REG. OF DEEDS

Lucy Spand

96 MAR 20 AM 8:49

STATE OF MICHIGAN
COUNTY OF KENT
RECEIVED FOR RECORD

9019

Register of Deeds Stamp & File Number

4. Lot No. _____, Recorded Plat _____
5. Private Claims _____

I, Kirk Breitels, in a field survey on Feb. 9, 1996 do hereby state that under requirements of P.A. 74, Michigan P.A. of 1970, the corner points mentioned in lines 1 and 2 above were in conformance with regulations and rules therefore as required in the current manual of survey instructions of the United States Department of the Interior, Bureau of Land Management or by a decree of a Court of Law and/or that the corner points mentioned in lines 3, 4 and 5 above were in conformance with the rules of the Michigan Board of Land Surveyors or by a Decree of a Court of Law, established, re-established, monumented, recovered, found as expressed below:

NOTE: Not more than 2 corners, all in the same town and range, may be recorded on this certificate.

A	B	C	D	E	F	G	H	I	J	K	L	M
1												
2	6	5	4	3	2	1						
3												
4	7	8	9	10	11	12						
5												
6	18	17	16	15	14	13						
7												
8	19	20	21	22	23	24						
9												
10	30	29	28	27	26	25						
11												
12	31	32	33	34	35	36						
13												

P.A. 345 1990 KENT COUNTY

PEER APPROVED 3/7/96

CHAIRMAN *[Signature]*

A. Description of original monument and accessories and/or subsequent restoration:

- | | | | | |
|------|------|---------------|--------------|--------------------------|
| D-13 | 1831 | GLO | Mullett | Set Post |
| | | Kent Co. Wit. | | Plow Point |
| | 1982 | LCRC #3141 | Hackbardt | Set Kent County Monument |
| | 1989 | LCRC #5125 | Chettleburgh | Kent County Monument |

The position of this corner was previously approved by the Kent County Remonumentation Peer Group, monumented by Glen Hackbardt on 8/30/82 and was recorded per LCRC #3141

B. Description of corner evidence found and/or method applied in restoring or reestablishing corner:

D-13 Found standard Kent Co. Mon. (Harrison) per witnesses from above LCRC as set by Glen Hackbardt in place of the Boat Spike over a Plow Point he found. Both check with Kent Co. Wit.

LCRC #3141

- Nail/tag 10" Maple S02°E 91.15'
- Nail/tag 52' Ash S60°W 52.45'
- Nail/tag dbl. 12" Hickory N50°W 72.13'
- Nail/tag 8" Hickory N25°W 40.72'
- Nail/tag 12" Hickory N04°E 45.93'

LCRC #5125 (Nail/tag in trees)

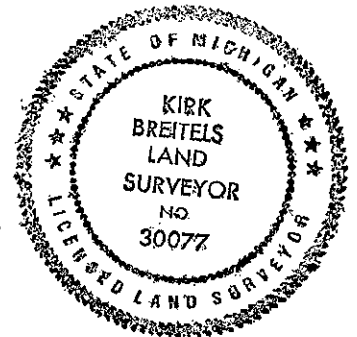
- 7" Hickory N04°E 35.39'
- 11" Hickory N06°E 45.79'
- 14" Map. S01°E 91.15' 9" Hick. N27°W 40.70'
- 52" Ash S64°W 52.40' KC Mon. N88°W 78.77'
- Tw. 13" Hickory N48°W 72.12'

The selected location is accepted by me and is generally accepted by professional surveyors as the best available evidence of the position of the original corner.

C. Description of monument for corner and accessories established to perpetuate locating the position of the corner:

D-13 Standard Kent County Monument

- | | | |
|---|-------|--------|
| New Nail & KC Remon. tag E. side 9" Hickory | N04°E | 35.39' |
| New Nail & KC Remon. tag E. side 11" Hickory | N06°E | 45.79' |
| Set Nail & KC Remon. tag W. side 18" Maple | S01°E | 91.37' |
| Nail & KC Remon. tag S. side 56" Ash | S64°W | 52.40' |
| Nail & KC Remon. tag S. side Twin 15" Hickory | N48°W | 72.12' |
| Nail & KC Remon. tag S. side 9" Hickory | N27°W | 40.70' |
| Kent County Monument (D-1, T6N, R10W) | West | 78.77' |



Signed by *[Signature]*

Date 3/1/96

Surveyor's Michigan License No. 30077