

SURVEY & REMONUMENTATION

MAR 03 1998

LAND CORNER RECORDATION CERTIFICATE Filing Requirement of Act 74, Mich. P.A. 1970 KENT COUNTY REMONUMENTATION

For corners in

	SECTION	Located in:	Ada Township	Corner Code #
1. Public Land Survey		T <u>7N</u>	R <u>10W</u>	<u>E-6</u>
		T _____	R _____	_____
		T _____	R _____	_____
		T _____	R _____	_____
2. Property Controlling in Section	S _____	T _____	R _____	_____
	S _____	T _____	R _____	_____
3. Miscellaneous Property in Sec.	S _____	T _____	R _____	_____
	S _____	T _____	R _____	_____

REG. OF DEEDS
 97 OCT 15 AM 8:50
 STATE OF MICHIGAN
 COUNTY OF KENT
 RECEIVED FOR RECORD

10190

Register of Deeds Stamp & File Number

4. Lot No. _____, Recorded Plat _____
 5. Private Claims _____

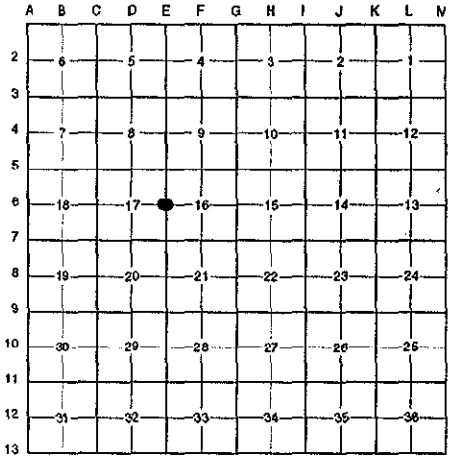
I, Randy Kolehouse, in a field survey on June 3 19 97, do hereby certify that under requirements of P.A. 74 Michigan P.A. of 1970, the corner points mentioned in lines 1 and 2 above were in conformance with regulations and rules therefore as required in the current manual of survey instructions of the United States Department of the Interior, Bureau of Land Management or by a decree of a Court of Law and/or that the corner points mentioned in lines 3, 4 and 5 above were in conformance with the rules of the Michigan Board of Land Surveyors or by a Decree of a Court of Law; established, re-established, monumented, re-monumented, recovered, found as expressed below:

NOTE: Not more than 4 corners, all in the same town and range, may be recorded on this certificate.

A. Description of original monument and accessories and/or subsequent restoration:

E-6	1831	G.L.O. Notes	Mullett	Set Post	
	N/A	Witness Map	K.C. Surveyor	Iron	
	1974	L.C.R.C. #1086	Medema, Van Kooten & Assoc.	"T" Iron	
	1981	L.C.R.C. #2579	Jonker Land Survey	Fnd. "T" Iron / Set K.C. Monument	
	1989	L.C.R.C. #5130	T. Chettleburgh	K.C. Monument	

P.A. 345 1990 KENT COUNTY
 PEER APPROVED 6/26/97
 CHAIRMAN Randy Kolehouse



This corner was originally approved by the Kent County Remonumentation Peer Group and monumented by Rob Jonker on 12/15/81 and was recorded per L.C.R.C. #2579.

B. Description of corner evidence found and/or method applied in restoring or reestablishing corner:

E-6 Found a Standard Kent County Monument (.2' below grade) 9' East of C/L of Egypt Valley Avenue (gravel) running North and South on line of a fence line running West per L.C.R.C.'s #2579 and #5130 as set by Rob Jonker in place of a "T" iron he found which checked L.C.R.C. #1086 and the K.C. Surveyor's records.

L.C.R.C. #2579

L.C.R.C. #5130

Top east face conc. fe. post N 88° W 32.5'
 Remon. tag on SW side 16" Poplar N 44° W 41.65'
 Remon. tag on NW side 26" Oak N 17° E 89.55'
 Remon. tag on E side 14" W. Cherry N 19° W 96.53'

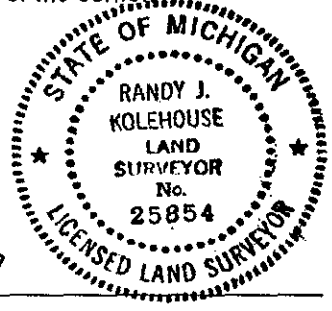
K. C. Remon. Tag & Nail West side 27" Oak N 17° E 89.52'
 K. C. Remon. Tag & Nail East side 14" Wild Cherry S 14° W 118.02'
 K. C. Remon. Tag & Nail South side 12" Oak N 72° W 33.07'
 K. C. Remon. Tag & Nail Southwest side 16" Poplar N 44° W 41.75'
 K. C. Remon. Tag & Nail East side 15" Wild Cherry N 18° W 96.53'

The selected location is accepted by me and is generally accepted by professional surveyors as the best available evidence of the position of the original corner.

C. Description of monument for corner and accessories established to perpetuate locating the position of the corner:

E-6 Standard Kent County Monument

- Nail & K.C. remon. tag on W side 28" Oak N 17° E 89.52'
- Nail & K.C. remon. tag on E side 14" W. Cherry S 14° W 118.02'
- Nail & K.C. remon. tag on S side 12" Oak N 72° W 33.07'
- Nail & K.C. remon. tag on SW side 16" Poplar N 44° W 41.75'
- Nail & K.C. remon. tag on E side 16" W. Cherry N 18° W 96.53'



Signed by Randy J. Kolehouse Date 8-1-97

Surveyor's Michigan License No. 25854