

SURVEY & REMONUMENTATION

MAR 03 1998

SECTION

LAND CORNER RECORDATION CERTIFICATE Filing Requirement of Act 74, Mich. P.A. 1970 KENT COUNTY REMONUMENTATION

For corners in

Kent <small>(County)</small>	Located in:	Ada <small>Township</small>	Corner Code #
1. Public Land Survey	T <u>7N</u> R <u>10W</u>		<u>E-7</u>
	T _____ R _____		_____
	T _____ R _____		_____
	T _____ R _____		_____
2. Property Controlling in Section	S _____ T _____ R _____		_____
	S _____ T _____ R _____		_____
3. Miscellaneous Property in Sec.	S _____ T _____ R _____		_____
	S _____ T _____ R _____		_____

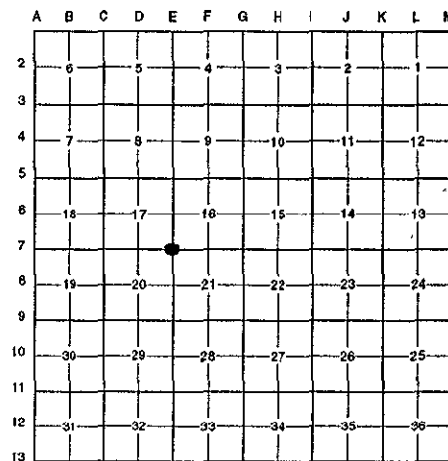
STATE OF MICHIGAN
 COUNTY OF KENT
 RECEIVED FOR RECORD
 97 OCT 15 AM 8:50
 REG. OF DEEDS
Lucy Bond

10191

Register of Deeds Stamp & File Number

4. Lot No. _____, Recorded Plat _____
 5. Private Claims _____

I, Randy Kolehouse, in a field survey on June 3 19 97, do hereby certify that under requirements of P.A. 74 Michigan P.A. of 1970, the corner points mentioned in lines 1 and 2 above were in conformance with regulations and rules therefore as required in the current manual of survey instructions of the United States Department of the Interior, Bureau of Land Management or by a decree of a Court of Law and/or that the corner points mentioned in lines 3, 4 and 5 above were in conformance with the rules of the Michigan Board of Land Surveyors or by a Decree of a Court of Law; established, re-established, monumented, re-monumented, recovered, found as expressed below:



NOTE: Not more than 4 corners, all in the same town and range, may be recorded on this certificate.

A. Description of original monument and accessories and/or subsequent restoration:

E-7	1831	G.L.O. Notes	Mullett	Set Post
	N/A	Witness Map	K.C. Surveyor	Iron Plow Point
	1974	L.C.R.C. #1086	Medema, Van Kooten & Assoc.	Concrete Monument
	1981	L.C.R.C. #2580	Jonker Land Survey	Fnd. 4"x28" Concrete Monument / Set K.C. Monument
	1989	L.C.R.C. #5131	T. Chettleburgh	K.C. Monument

This corner was originally approved by the Kent County Remonumentation Peer Group and monumented by Rob Jonker on 12/15/81 and was recorded per L.C.R.C. #2580.

B. Description of corner evidence found and/or method applied in restoring or reestablishing corner:

E-7 Found a Standard Kent County Monument 2' East of the C/L of Egypt Valley Avenue (gravel) running North and South and 11' South of a fence row running East per L.C.R.C.'s #2580 and #5131 as set by Rob Jonker in place of a 4" x 28" concrete monument he found surrounded by stones and a plow point 12" below grade which checked L.C.R.C. #1086 and the K.C. Surveyor's records.

L.C.R.C. #2580

L.C.R.C. #5131

Remon. tag on NW side 6" Ash S 53° W 58.95'
 Remon. tag on N side 8" Oak S 85° W 59.97'
 Remon. tag on NE side 9" Ash N 55° W 58.87'
 Remon. tag on S side 9" Oak N 63° E 28.02'
 Remon. tag on SW side 12" Ash S 72° E 42.02'
 Remon. tag on NE side 24" Oak S 17° E 64.41'

K. C. Remon. Tag & Nail South side 12" Oak N 65° E 28.02'
 Centerline North-South gravel drive East 2' ±
 K. C. Remon. Tag & Nail Southwest side 13" Ash S 74° E 42.02'
 K. C. Remon. Tag & Nail Northeast side 20" Oak S 17° E 64.41'
 Centerline fence & tree row to East South 11' ±
 K. C. Remon. Tag & Nail Northwest side 8" Ash S 53° W 58.82'
 K. C. Remon. Tag & Nail North side 9" Oak S 85° W 59.97'
 K. C. Remon. Tag & Nail Northeast side 10" Ash N 54° W 58.82'

The selected location is accepted by me and is generally accepted by professional surveyors as the best available evidence of the position of the original corner.

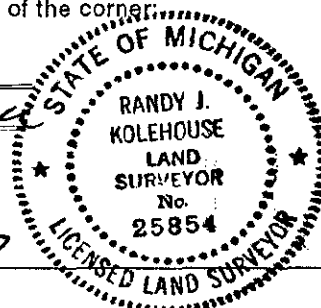
C. Description of monument for corner and accessories established to perpetuate locating the position of the corner:

E-7 Standard Kent County Monument

Nail & K.C. remon. tag on S side 12" Oak N 65° E 28.02'
 Nail & K.C. remon. tag on SW side 14" Ash S 74° E 42.02'
 Nail & K.C. remon. tag on NE side 20" Oak S 17° E 64.41'
 Nail & K.C. remon. tag on NE side 10" Ash N 54° W 58.82'

P.A. 345 1990 KENT COUNTY

PEER APPROVED 6/26/97
 CHAIRMAN Randy Kolehouse



Signed by Randy J. Kolehouse
EARTH TECH

Date 8-1-97

Surveyor's Michigan License No. 25854