

**SURVEY & REMONUMENTATION**

MAR 03 1998

SECTION

**LAND CORNER RECORDATION CERTIFICATE**  
**Filing Requirement of Act 74, Mich. P.A. 1970**  
**KENT COUNTY REMONUMENTATION**

\$7.00  
\$2.00

For corners in:

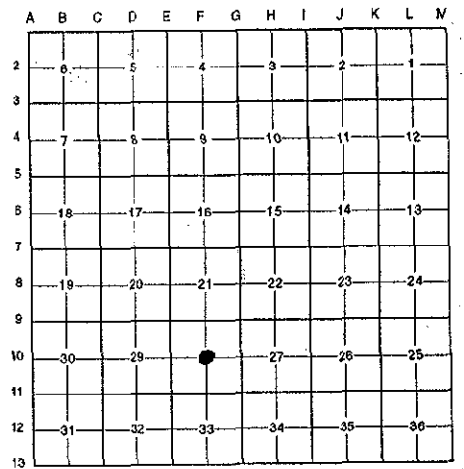
<u>Kent</u> (County)	Located in: <u>Ada</u> Township	Corner Code # <u>F-10</u>
1. Public Land Survey	T <u>7N</u> R <u>10W</u>	<u>F-10</u>
	T _____ R _____	_____
	T _____ R _____	_____
	T _____ R _____	_____
2. Property Controlling in Section:	S _____ T _____ R _____	<u>Seg. #2</u>
	S _____ T _____ R _____	_____
3. Miscellaneous Property in Sec.	S _____ T _____ R _____	_____
	S _____ T _____ R _____	_____
4. Lot No. _____, Recorded Plat _____		
5. Private Claims _____		

STATE OF MICHIGAN  
 COUNTY OF KENT  
 RECEIVED FOR RECORD  
 97 DEC 15 AM 10:42  
 REG. OF DEEDS  
*Lucy Bond*

**10363**

Register of Deeds Stamp & File Number

I, Randy Kolehouse, in a field survey on December 5 19 97, do hereby certify that under requirements of P.A. 74 Michigan P.A. of 1970, the corner points mentioned in lines 1 and 2 above were in conformance with regulations and rules therefore as required in the current manual of survey instructions of the United States Department of the interior, Bureau of Land Management or by a decree of a Court of Law and/or that the corner points mentioned in lines 3, 4 and 5 above were in conformance with the rules of the Michigan Board of Land Surveyors or by a Decree of a Court of Law; established, re-established, monumented, re-monumented, recovered, found as expressed below:



**NOTE: Not more than 4 corners, all in the same town and range, may be recorded on this certificate.**

- A. Description of original monument and accessories and/or subsequent restoration:
- F-10 This corner was not originally set by the G.L.O.
  - 1993 Cert. Survey L. 258 P. 47 William Byl N/A
  - 1993 L.C.R.C. #6867 William Byl K.C. Monument

This corner was originally approved by the Kent County Remonumentation Peer Group and monumented by William Byl on 12/28/93 and was recorded per L.C.R.C. #6867.

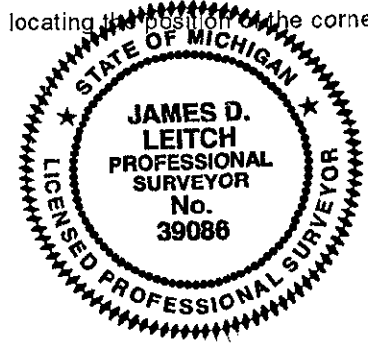
- B. Description of corner evidence found and/or method applied in restoring or reestablishing corner:
- F-10 The Kent County Monument as set by William Byl in L.C.R.C. #6867 has been removed due to construction and no witnesses remain. Reset monument per Cert. Survey L. 258 P. 47 in East side gravel parking area on the West side of Amway Corporation property. Center is 2626.03' North of the South 1/4 corner and 2661.03' East of the West 1/4 corner.

P.A. 345 1990 KENT COUNTY  
 PEER APPROVED 10/30/97  
 CHAIRMAN *Harry Huber*

The selected location is accepted by me and is generally accepted by professional surveyors as the best available evidence of the position of the original corner.

- C. Description of monument for corner and accessories established to perpetuate locating the position of the corner:

- F-10 Reset a Standard Kent County Monument
- Nail & K.C. remon. tag on E side 5" Box Elder N 64° E 66.27'
- Nail & K.C. remon. tag on N side 8" Aspen S 60° E 92.54'
- Nail & K.C. remon. tag on S side 6" Aspen S 50° E 94.32'
- Nail & K.C. remon. tag on N side 12" Aspen S 35° E 74.72'
- Nail & K.C. remon. tag on NE side 6" Aspen S 25° E 44.58'
- P.K. nail set in top wood guardrail post S 05° W 79.7'
- C/L 3' wide creek East 65' ±
- C/L of gravel drive running SE-NW 50' ± South



Signed by *[Signature]* Date 12/8/97  
 EARTH TECH  
 Surveyor's Michigan License No. 39086