

SURVEY & REMONUMENTATION

MAR 03 1998

LAND CORNER RECORDATION CERTIFICATE
 Filing Requirement of Act 74, Mich. P.A. 1970
 KENT COUNTY REMONUMENTATION

STATE OF MICHIGAN
 COUNTY OF KENT
 RECEIVED FOR RECORD
 97 OCT 15 AM 8:51
 REG. OF DEEDS
David Stand

SECTION

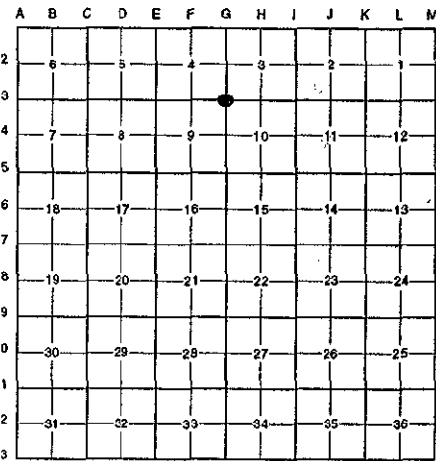
For corners in Kent (County)

Located in: Ada Township Corner Code # _____

1. Public Land Survey	T <u>7N</u> R <u>10W</u>	<u>G-3</u>
	T _____ R _____	_____
	T _____ R _____	_____
	T _____ R _____	_____
2. Property Controlling in Section	S _____ T _____ R _____	_____
	S _____ T _____ R _____	_____
3. Miscellaneous Property in Sec.	S _____ T _____ R _____	_____
	S _____ T _____ R _____	_____
4. Lot No. _____, Recorded Plat _____		
5. Private Claims _____		

10202

Register of Deeds Stamp & File Number



I, Randy Kolehouse, in a field survey on April 1 19 97, do hereby certify that under requirements of P.A. 74 Michigan P.A. of 1970, the corner points mentioned in lines 1 and 2 above were in conformance with regulations and rules therefore as required in the current manual of survey instructions of the United States Department of the interior, Bureau of Land Management or by a decree of a Court of Law and/or that the corner points mentioned in lines 3, 4 and 5 above were in conformance with the rules of the Michigan Board of Land Surveyors or by a Decree of a Court of Law; established, re-established, monumented, re-monumented, recovered, found as expressed below:

NOTE: Not more than 4 corners, all in the same town and range, may be recorded on this certificate.

A. Description of original monument and accessories and/or subsequent restoration:

G-3	1831	G.L.O. Notes	Mullett	Set Post	P.A. 345 1990 KENT COUNTY
	1956	Witness Map	K.C. Surveyor	Iron	PEER APPROVED 5/22/97
	1974	L.C.R.C. #726	Medema, Van Kooten & Assoc.	1" Round Iron	CHAIRMAN <i>Harry Huben</i>
	1981	L.C.R.C. #2585	Jonker Land Survey	Fnd. 1" Round Iron / Set K.C. Monument	
	1989	L.C.R.C. #5144	T. Chettleburgh	K.C. Monument	

This corner was originally approved by the Kent County Remonumentation Peer Group and monumented by Rob Jonker on 12/15/81 and was recorded per L.C.R.C. #2585.

B. Description of corner evidence found and/or method applied in restoring or reestablishing corner:

G-3 Found a Standard Kent County Monument 6' North of the C/L of 3 Mile Road (gravel) 0.8' below grade per L.C.R.C.'s #2585 and #5144 as set by Rob Jonker in place of a 1" round iron he found which checked L.C.R.C. #726 and the K.C. Surveyor's records.

L.C.R.C. #2585

L.C.R.C. #5144

Remon. tag on W side 16" Oak S 02° W 40.73'
 Remon. tag on SW side 10" Ash S 53° E 70.79'
 Remon. tag on E side 12" Oak N 15° W 18.07'
 Remon. tag on SE side 8" Poplar N 38° E 19.53'
 Remon. tag on SE side 8" Elm S 45° W 65.52'
 Remon. tag on S side 12" Tw. Walnut N 80° W 71.34'

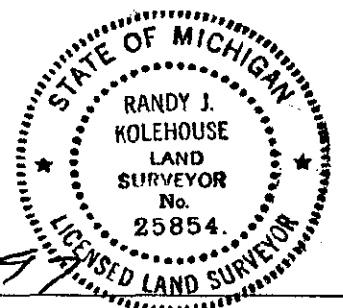
K. C. Remon. Tag & Nail Southeast side 8" Poplar N 36° E 19.53'
 K. C. Remon. Tag & Nail Southwest side 12" Ash S 52° E 70.77' (m. 70.74')
 Centerline East-West gravel drive South 6' ±
 K. C. Remon. Tag & Nail West side 17" Oak S 02° W 40.73' (m. 40.76')
 K. C. Remon. Tag & Nail Southeast side 12" Elm S 45° W 65.52' (m. 65.58')
 K. C. Remon. Tag & Nail South side Tw. 13" Walnut N 66° W 71.27'
 K. C. Remon. Tag & Nail East side 13" Oak N 17° W 18.07'

The selected location is accepted by me and is generally accepted by professional surveyors as the best available evidence of the position of the original corner.

C. Description of monument for corner and accessories established to perpetuate locating the position of the corner:

G-3 Standard Kent County Monument

Nail & K.C. remon. tag on SE side 8" Poplar N 36° E 19.53'
 Nail & K.C. remon. tag on SW side 12" Ash S 52° E 70.74'
 Nail & K.C. remon. tag on W side 18" Oak S 02° W 40.76'
 Nail & K.C. remon. tag on SE side 12" Elm S 45° W 65.58'
 Nail & K.C. remon. tag on S side 14" Walnut N 66° W 71.27'
 Nail & K.C. remon. tag on E side 14" Oak N 17° W 18.07'



Signed by *Randy J. Kolehouse* Date 8-1-97
 EARTH TECH

Surveyor's Michigan License No. 25854