

SURVEY & REMONUMENTATION

MAR 03 1998

SECTION

LAND CORNER RECORDATION CERTIFICATE
Filing Requirement of Act 74, Mich. P.A. 1970
KENT COUNTY REMONUMENTATION

For corners in

Kent (County)	Located in:	Ada Township	Corner Code #
1. Public Land Survey	T <u>7N</u>	R <u>10W</u>	<u>G-4</u>
	T _____	R _____	_____
	T _____	R _____	_____
	T _____	R _____	_____
2. Property Controlling in Section	S _____	T _____	R _____
	S _____	T _____	R _____
3. Miscellaneous Property in Sec.	S _____	T _____	R _____
	S _____	T _____	R _____

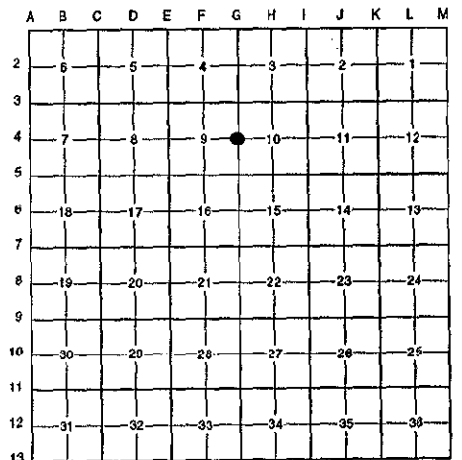
STATE OF MICHIGAN
 COUNTY OF KENT
 REGISTERED FOR RECORD
 REG. OF DEEDS
 97 OCT 15 AM 8:51
Randy J. Kolehouse

10203

Register of Deeds Stamp & File Number

4. Lot No. _____, Recorded Plat _____
 5. Private Claims _____

I, Randy Kolehouse, in a field survey on April 10 19 97, do hereby certify that under requirements of P.A. 74 Michigan P.A. of 1970, the corner points mentioned in lines 1 and 2 above were in conformance with regulations and rules therefore as required in the current manual of survey instructions of the United States Department of the interior, Bureau of Land Management or by a decree of a Court of Law and/or that the corner points mentioned in lines 3, 4 and 5 above were in conformance with the rules of the Michigan Board of Land Surveyors or by a Decree of a Court of Law; established, re-established, monumented, re-monumented, recovered, found as expressed below:



NOTE: Not more than 4 corners, all in the same town and range, may be recorded on this certificate.

A. Description of original monument and accessories and/or subsequent restoration:

Date	Description	Surveyor	Monument
G-4 1831	G.L.O. Notes	Mullett	Set Post
1949	Witness Map	K.C. Surveyor	Stone & Iron
1974	L.C.R.C. #726	Medema, Van Kooten & Assoc.	"T" Iron
1982	L.C.R.C. #3145	Moore & Bruggink	Fnd. "T" Iron / Set K.C. Monument
1989	L.C.R.C. #5145	T. Chettleburgh	K.C. Monument

P.A. 345 1990 KENT COUNTY
 PEER APPROVED 5/22/97
 CHAIRMAN *Randy Kolehouse*

This corner was originally approved by the Kent County Remonumentation Peer Group and monumented by Moore & Bruggink on 6/21/82 and was recorded per L.C.R.C. #3145.

B. Description of corner evidence found and/or method applied in restoring or reestablishing corner:

G-4 Found a Standard Kent County Monument on the C/L of Knapp Street (bit.) Extended East running West and Northeasterly on line of a tree row running South per L.C.R.C.'s #3145 and #5145 as set by Moore & Bruggink in place of a "T" iron they found which checked L.C.R.C. #726 and the K.C. Surveyor's records.

L.C.R.C. #3145

K.C. Nail & Tag 8" Maple S 45° W 57.54'
 K.C. Nail & Tag 10" Maple South 22.92'

L.C.R.C. #5145

Centerline Pavement North 23' ±
 K.C. Remon. Tag & Nail West side 10" Sassafras S 56° E 21.31'
 K.C. Remon. Tag & Nail East side 9" Maple S 03° W 22.93' (m. 22.97')
 K.C. Remon. Tag & Nail Southeast side 7" Maple S 51° W 57.50'
 K.C. Remon. Tag & Nail Southwest side 16" Elm N 66° W 85.71'
 K.C. Remon. Tag & Nail West side Power Pole N 47° W 66.55'

The selected location is accepted by me and is generally accepted by professional surveyors as the best available evidence of the position of the original corner.

C. Description of monument for corner and accessories established to perpetuate locating the position of the corner:

G-4 Standard Kent County Monument

- Nail & K.C. remon. tag on W side 10" Sassafras S 56° E 21.31'
- Nail & K.C. remon. tag on E side 9" Maple S 03° W 22.97'
- Nail & K.C. remon. tag on SE side 7" Maple S 51° W 57.50'
- Nail & K.C. remon. tag on SW side 16" Elm stump N 66° W 85.71'
- Nail & K.C. remon. tag on W side P. pole N 47° W 66.55'
- C/L E/W Knapp Rd. North 23' ±



Signed by *Randy J. Kolehouse* Date 5-1-97

Surveyor's Michigan License No. 25854