

MAR 03 1998

SECTION

LAND CORNER RECORDATION CERTIFICATE
Filing Requirement of Act 74, Mich. P.A. 1970
KENT COUNTY REMONUMENTATION

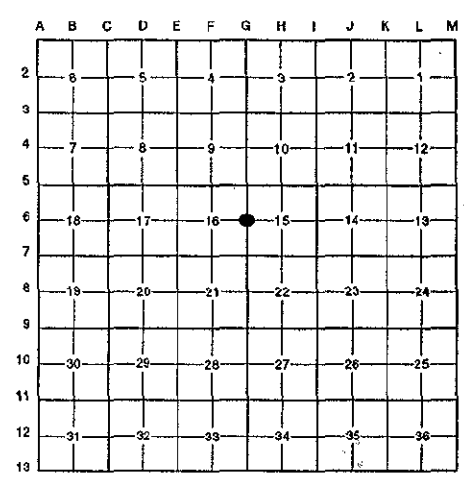
For corners in Kent (County) Located in: Ada Township Corner Code #
1. Public Land Survey T 7N R 10W G-6
2. Property Controlling in Section S T R
3. Miscellaneous Property in Sec. S T R
4. Lot No. , Recorded Plat
5. Private Claims

REG. OF DEEDS
97 OCT 15 AM 8:51
STATE OF MICHIGAN
COUNTY OF KENT
RECEIVED FOR RECORD

10205

Register of Deeds Stamp & File Number

I, Randy Kolehouse, in a field survey on April 11 19 97, do hereby certify that under requirements of P.A. 74 Michigan P.A. of 1970, the corner points mentioned in lines 1 and 2 above were in conformance with regulations and rules therefore as required in the current manual of survey instructions of the United States Department of the Interior, Bureau of Land Management or by a decree of a Court of Law and/or that the corner points mentioned in lines 3, 4 and 5 above were in conformance with the rules of the Michigan Board of Land Surveyors or by a Decree of a Court of Law; established, re-established, monumented, re-monumented, recovered, found as expressed below:



NOTE: Not more than 4 corners, all in the same town and range, may be recorded on this certificate.

A. Description of original monument and accessories and/or subsequent restoration:

Table with 4 columns: G-6, Description, Date, and Monument Type. Includes entries for G.L.O. Notes, Witness Map, L.C.R.C. #1087, #3142, #5147, Mullett, K.C. Surveyor, Medema, Van Kooten & Assoc., Moore & Bruggink, T. Chettleburgh, Set Post, 1/2" Iron, 3/4" Round Iron, and Fnd. 3/4" Iron / Set K.C. Monument.

P.A. 345 1990 KENT COUNTY
PEER APPROVED 5/22/97
CHAIRMAN [Signature]

This corner was originally approved by the Kent County Remonumentation Peer Group and monumented by Moore & Bruggink on 6/22/82 and was recorded per L.C.R.C. #3142.

B. Description of corner evidence found and/or method applied in restoring or reestablishing corner:

G-6 Found a Standard Kent County Monument 8' East of the C/L of Cramton Avenue (gravel) running North and South on line of a fence line running East and West per L.C.R.C.'s #3142 and #5147 as set by Moore & Bruggink in place of a 3/4" iron they found over a 1/2" iron which checked L.C.R.C. #1087 and the K.C. Surveyor's records.

L.C.R.C. #3142

L.C.R.C. #5147

- K.C. Nail & Tag 15" Oak N 30° E 25.16'
K.C. Nail & Tag 32" Oak S 20° E 43.97'
K.C. Nail & Tag 12" Oak N 45° W 36.81'
K.C. Nail & Tag 12" Oak N 85° W 30.57'
K.C. Nail & Tag 10" Cherry N 30° W 80.89'

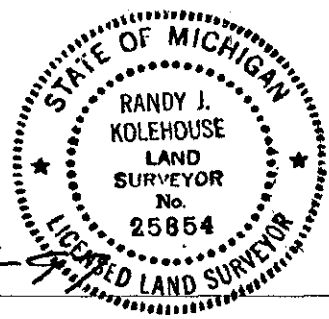
- K.C. Remon. Tag & Nail Southeast side 16" Oak N 37° E 25.16'
K.C. Remon. Tag & Nail West side 32" Oak S 18° E 43.95'
K.C. Remon. Tag & Nail Southeast side 12" Oak S 57° W 36.80'
K.C. Remon. Tag & Nail East side Multi-12" Wild Cherry N 27° W 80.93'
K.C. Remon. Tag & Nail South side 12" Oak N 80° W 30.55'
On fence lines East & West

The selected location is accepted by me and is generally accepted by professional surveyors as the best available evidence of the position of the original corner.

C. Description of monument for corner and accessories established to perpetuate locating the position of the corner:

G-6 Standard Kent County Monument

- Nail & K.C. remon. tag on SE side 16" Oak N 37° E 25.16'
Nail & K.C. remon. tag on W side 32" Oak S 18° E 43.95'
Nail & K.C. remon. tag on SE side 12" Oak S 57° W 36.80'
Nail & K.C. remon. tag on E side multi 12" Wild Cherry N 27° W 80.95'
Nail & K.C. remon. tag on S side 12" Oak N 80° W 30.55'



Signed by [Signature] Date 8-1-97
EARTH TECH

Surveyor's Michigan License No. 25854