

MAR 03 1998

SECTION

LAND CORNER RECORDATION CERTIFICATE
Filing Requirement of Act 74, Mich. P.A. 1970
KENT COUNTY REMONUMENTATION

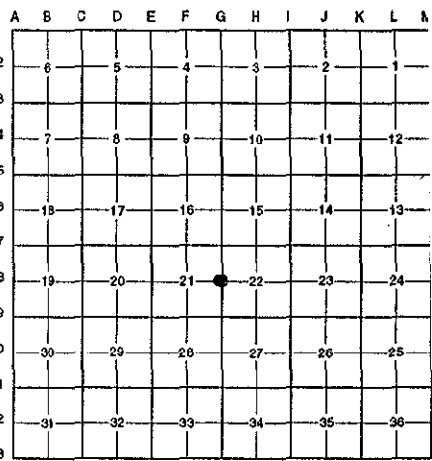
For corners in

Located in:	Ada Township	Corner Code #
Kent (County)		
1. Public Land Survey	T <u>7N</u> R <u>10W</u>	<u>G-8</u>
	T _____ R _____	_____
	T _____ R _____	_____
	T _____ R _____	_____
2. Property Controlling in Section	S _____ T _____ R _____	_____
	S _____ T _____ R _____	_____
3. Miscellaneous Property in Sec.	S _____ T _____ R _____	_____
	S _____ T _____ R _____	_____

STATE OF MICHIGAN
COUNTY OF KENT
RECEIVED FOR RECORD
97 OCT 15 AM 8:51
REG. OF DEEDS
Luci Stand
10207
Register of Deeds Stamp & File Number

4. Lot No. _____, Recorded Plat _____
5. Private Claims _____

I, Randy Kolehouse, in a field survey on January 29 19 97, do hereby certify that under requirements of P.A. 74 Michigan P.A. of 1970, the corner points mentioned in lines 1 and 2 above were in conformance with regulations and rules therefore as required in the current manual of survey instructions of the United States Department of the interior, Bureau of Land Management or by a decree of a Court of Law and/or that the corner points mentioned in lines 3, 4 and 5 above were in conformance with the rules of the Michigan Board of Land Surveyors or by a Decree of a Court of Law; established, re-established, monumented, re-monumented, recovered, found as expressed below:



NOTE: Not more than 4 corners, all in the same town and range, may be recorded on this certificate.

A. Description of original monument and accessories and/or subsequent restoration:

G-8	1831	G.L.O. Notes	Mullett	Set Post
	1940	Witness Map	K.C. Surveyor	Concrete Monument
	1972	L.C.R.C. #393	Williams & Works	3/4" Iron
	1981	L.C.R.C. #2505	C. Hay	Fnd. 3/4" Iron / Set K.C. Monument
	1989	L.C.R.C. #5149	T. Chettleburgh	K.C. Monument

P.A. 345 1990 KENT COUNTY
PEER APPROVED 5/22/97
CHAIRMAN Stan Huber

This corner was originally approved by the Kent County Remonumentation Peer Group and monumented by C. Hay on 12/11/81 and was recorded per L.C.R.C. #2505.

B. Description of corner evidence found and/or method applied in restoring or reestablishing corner:

G-8 Found a Standard Kent County Monument at the C/L of Conservation Street (gravel) running East and West and 20' West of the C/L of Cramton Avenue (gravel) running North per L.C.R.C.'s #2505 and #5149 as set by C. Hay in place of a 1/2" rod and cap he found over a 3/4" iron which checked L.C.R.C. #393 and the K.C. Surveyor's records.

L.C.R.C. #2505

Remon. Tag East side 24" Oak S 15° W 23.12'
Remon. Tag NE side 12" W. Cherry S 45° E 36.45'
Remon. Tab East side 12" Oak South 50.20'

L.C.R.C. #5149

K.C. Remon. Tag & Nail North side 13" Wild Cherry S 45° E 36.46'
K.C. Remon. Tag & Nail East side 22" Oak S 02° W 50.15'
K.C. Remon. Tag & Nail East side 24" Oak S 15° W 23.14'
K.C. Remon. Tag & Nail Southeast side Powerpole S 42° W 61.91'
K.C. Remon. Tag & Nail North side 24" Hickory N 84° W 118.98'

The selected location is accepted by me and is generally accepted by professional surveyors as the best available evidence of the position of the original corner.

C. Description of monument for corner and accessories established to perpetuate locating the position of the corner:

G-8 Standard Kent County Monument

- Nail & K.C. remon. tag on N side 14" Wild Cherry S 45° E 36.46'
- Nail & K.C. remon. tag on E side 22" Oak S 02° W 50.15'
- Nail & K.C. remon. tag on E side 24" Oak S 15° W 23.14'
- Nail & K.C. remon. tag on SE side P. pole S 42° W 62.91'
- Nail & K.C. remon. tag on N side 24" Hickory N 84° W 118.98'

Signed by Randy J. Kolehouse Date 8-1-97

EARTH TECH

Surveyor's Michigan License No. 25854

