

**SURVEY & REMONUMENTATION**

MAR 03 1998

**SECTION LAND CORNER RECORDATION CERTIFICATE**  
**Filing Requirement of Act 74, Mich. P.A. 1970**  
**KENT COUNTY REMONUMENTATION**

For corners in

Kent (County)	Located in: Ada Township	Corner Code #
1. Public Land Survey	T <u>7N</u> R <u>10W</u>	<u>G-12</u>
	T _____ R _____	_____
	T _____ R _____	_____
	T _____ R _____	_____
2. Property Controlling in Section	S _____ T _____ R _____	_____
	S _____ T _____ R _____	_____
3. Miscellaneous Property in Sec.	S _____ T _____ R _____	_____
	S _____ T _____ R _____	_____

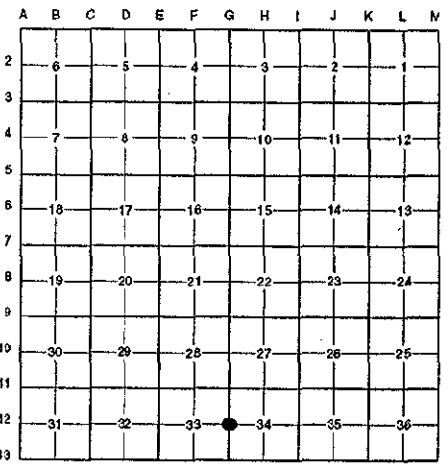
STATE OF MICHIGAN  
 COUNTY OF KENT  
 RECEIVED FOR RECORD  
 97 OCT 15 AM 8:51  
 REG. OF DEEDS  
*Luci St. Bond*

**10208**

Register of Deeds Stamp & File Number

4. Lot No. \_\_\_\_\_, Recorded Plat \_\_\_\_\_  
 5. Private Claims \_\_\_\_\_

I, Randy Kolehouse, in a field survey on January 24 19 97, do hereby certify that under requirements of P.A. 74 Michigan P.A. of 1970, the corner points mentioned in lines 1 and 2 above were in conformance with regulations and rules therefore as required in the current manual of survey instructions of the United States Department of the interior, Bureau of Land Management or by a decree of a Court of Law and/or that the corner points mentioned in lines 3, 4 and 5 above were in conformance with the rules of the Michigan Board of Land Surveyors or by a Decree of a Court of Law; established, re-established, monumented, re-monumented, recovered, found as expressed below:



**NOTE: Not more than 4 corners, all in the same town and range, may be recorded on this certificate.**

A. Description of original monument and accessories and/or subsequent restoration:

G-12	1831	G.L.O. Notes	Mullett	Set Post
	1974	L.C.R.C. #666	Williams & Works	Iron
	1981	L.C.R.C. #2587	Jonker Land Survey	Fnd. 1" Iron / Set K.C. Monument
	1989	L.C.R.C. #5152	T. Chettleburgh	K.C. Monument

P.A. 345 1990 KENT COUNTY  
 PEER APPROVED 5/22/97  
 CHAIRMAN *[Signature]*

This corner was originally approved by the Kent County Remonumentation Peer Group and monumented on 12/28/81 by Rob Jonker and was recorded per L.C.R.C. #2587.

B. Description of corner evidence found and/or method applied in restoring or reestablishing corner:  
 G-12 Found a Standard Kent County Monument in the woods 25' West of a 2-track and 2' East of a lone fence post per L.C.R.C.'s #2587 and #5152 as set by Rob Jonker in place of a 1" iron he found at an angle point in a fence which checked L.C.R.C. #666 and the K.C. Surveyor's records.

L.C.R.C. #2587

L.C.R.C. #5152

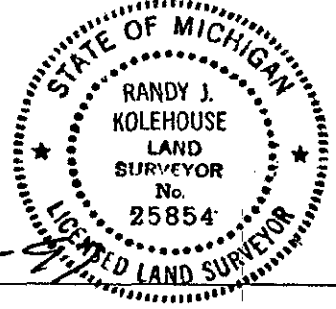
Remon. tag on N side 12" W. Cherry S 49° E 16.11'  
 Remon. tag on NE side 8" Oak N 62° E 21.67'  
 Remon. tag on W side 8" Sassafras N 20° E 27.93'  
 Remon. tag on NE side 10" Oak N 66° W 20.46'  
 Remon. tag on W side 6" Tw. W. Cherry S 47° W 9.22'  
 C/L N-S 2 track is East 25' m/l.

K.C. Remon. Tag & Nail North side 14" Wild Cherry S 50° E 16.11'  
 K.C. Remon. Tag & Nail Northeast side 8" Oak N 62° E 21.67' (m. 21.72')  
 K.C. Remon. Tag & Nail West side 9" Sassafras N 22° E 27.93'  
 K.C. Remon. Tag & Nail Northeast side 13" Oak N 66° W 20.46' (m. 20.58')  
 K.C. Remon. Tag & Nail West side 6" Tw. Wild Cherry S 48° W 9.22'  
 Centerline North-South Two Track East 25'±  
 K.C. Remon. Tag & Nail West side Tw. 7" Maple N 14° W 16.00'

The selected location is accepted by me and is generally accepted by professional surveyors as the best available evidence of the position of the original corner.

C. Description of monument for corner and accessories established to perpetuate locating the position of the corner:  
 G-12 Standard Kent County Monument

Nail & K.C. remon. tag on N side 14" Wild Cherry S 50° E 16.11'  
 Nail & K.C. remon. tag on NE side 8" Oak N 62° E 21.72'  
 Nail & K.C. remon. tag on W side 9" Sassafras N 22° E 27.93'  
 Nail & K.C. remon. tag on NE side 13" Oak N 66° W 20.58'  
 Nail & K.C. remon. tag on W side 6" Twin Wild Cherry S 48° W 9.22'  
 Nail & K.C. remon. tag on W side 9" Twin Maple N 14° W 16.00'



Signed by *Randy J. Kolehouse* Date 8-1-97  
 EARTH TECH

Surveyor's Michigan License No. 25854