

SURVEY & REMONUMENTATION

MAR 03 1998

LAND CORNER RECORDATION CERTIFICATE
Filing Requirement of Act 74, Mich. P.A. 1970
KENT COUNTY REMONUMENTATION

For corners in Kent SECTION _____ Located in: Ada Corner Code # _____
 (County) Township

| | | | |
|------------------------------------|-------------|--------------|------------|
| 1. Public Land Survey | T <u>7N</u> | R <u>10W</u> | <u>H-5</u> |
| | T _____ | R _____ | _____ |
| | T _____ | R _____ | _____ |
| | T _____ | R _____ | _____ |
| 2. Property Controlling in Section | S _____ | T _____ | R _____ |
| | S _____ | T _____ | R _____ |
| 3. Miscellaneous Property in Sec. | S _____ | T _____ | R _____ |
| | S _____ | T _____ | R _____ |

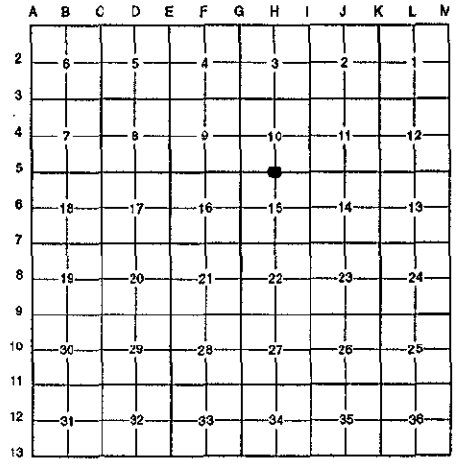
STATE OF MICHIGAN
 COUNTY OF KENT
 RECEIVED FOR RECORD
 97 OCT 15 AM 8:51
 REG. OF DEEDS
David Standa

10211

Register of Deeds Stamp & File Number

4. Lot No. _____, Recorded Plat _____
 5. Private Claims _____

I, Randy Kolehouse, in a field survey on June 3 19 97, do hereby certify that under requirements of P.A. 74 Michigan P.A. of 1970, the corner points mentioned in lines 1 and 2 above were in conformance with regulations and rules therefore as required in the current manual of survey instructions of the United States Department of the interior, Bureau of Land Management or by a decree of a Court of Law and/or that the corner points mentioned in lines 3, 4 and 5 above were in conformance with the rules of the Michigan Board of Land Surveyors or by a Decree of a Court of Law; established, re-established, monumented, re-monumented, recovered, found as expressed below:



NOTE: Not more than 4 corners, all in the same town and range, may be recorded on this certificate.

A. Description of original monument and accessories and/or subsequent restoration:

| | | | | |
|-----|------|----------------|--------------------|----------------------------------|
| H-5 | 1831 | G.L.O. Notes | Mullett | Set Post |
| | 1948 | Witness Map | K.C. Surveyor | 2-1/2" Iron |
| | 1979 | L.C.R.C. #1393 | Moore & Bruggink | Fnd. 1" Iron |
| | 1982 | L.C.R.C. #3148 | Moore & Bruggink | Fnd. 1" Iron / Set K.C. Monument |
| | 1994 | L.C.R.C. #8061 | Glaza & Associates | K.C. Monument |

This corner was originally approved by the Kent County Remonumentation Peer Group and monumented by Moore & Bruggink on 6/21/82 and was recorded per L.C.R.C. #3148.

B. Description of corner evidence found and/or method applied in restoring or reestablishing corner:
 H-5 Found a Standard Kent County Monument 5' South of the C/L of 2 Mile Road (gravel) running East and West and 40' ± West of the C/L of drive (bit.) running North to House #7615 per L.C.R.C.'s #3148 and #8061 as set by Moore & Bruggink in place of a 1" iron they found over a 2-1/2" x 24" iron which checked L.C.R.C. #1393 and the K.C. Surveyor's records.

| | |
|--|---|
| L.C.R.C. #3148 | L.C.R.C. #8061 |
| K.C. Nail & Tag 14" Hickory N 60° W 58.98' | K.C. remon tag & nail in S side 18" Hickory N 60° W 58.95' |
| K.C. Nail & Tag 15" Hickory N 20° W 35.77' | K.C. remon tag & nail in E side 18" Hickory N 20° W 35.79' |
| K.C. Nail & Tag 22" Oak N 05° E 35.53' | K.C. remon tag & nail in E side 24" Twin Oak N 05° E 35.60' |
| K.C. Nail & Tag 18" Oak N 10° E 69.35' | K.C. remon tag & nail in NW side 22" Oak N 30° E 61.97' |
| K.C. Nail & Tag 18" Oak N 30° E 61.84' | |

P.A. 345 1990 KENT COUNTY
 PEER APPROVED 6/26/97
 CHAIRMAN Harry Huber

The selected location is accepted by me and is generally accepted by professional surveyors as the best available evidence of the position of the original corner.

C. Description of monument for corner and accessories established to perpetuate locating the position of the corner:
 H-5 Standard Kent County Monument

Nail & K.C. remon. tag on S side 18" Hickory N 60° W 58.95'
 Nail & K.C. remon. tag on E side 18" Hickory N 20° W 35.79'
 Nail & K.C. remon. tag on E side 24" Twin Oak N 05° E 35.60'
 Nail & K.C. remon. tag on NW side 22" Oak N 30° E 61.97'

Signed by Randy J. Kolehouse Date 8-1-97
 EARTH TECH
 Surveyor's Michigan License No. 25854

