

MAR 03 1998

SECTION

LAND CORNER RECORDATION CERTIFICATE
Filing Requirement of Act 74, Mich. P.A. 1970
KENT COUNTY REMONUMENTATION

For corners in

Kent (County)

Located in: Ada Township

Corner Code #

- 1. Public Land Survey T 7N R 10W 1-2
2. Property Controlling in Section S T R
3. Miscellaneous Property in Sec. S T R

- 4. Lot No. Recorded Plat
5. Private Claims

STATE OF MICHIGAN COUNTY OF KENT RECEIVED FOR RECORD 97 OCT 15 AM 8:51 REG. OF DEEDS

10214

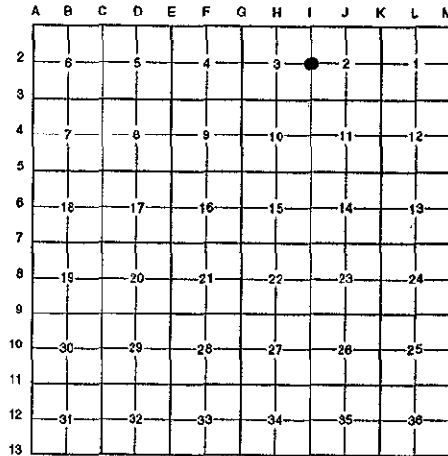
Register of Deeds Stamp & File Number

I, Randy Kolehouse, in a field survey on May 29 19 97, do hereby certify that under requirements of P.A. 74 Michigan P.A. of 1970, the corner points mentioned in lines 1 and 2 above were in conformance with regulations and rules therefore as required in the current manual of survey instructions of the United States Department of the interior, Bureau of Land Management or by a decree of a Court of Law and/or that the corner points mentioned in lines 3, 4 and 5 above were in conformance with the rules of the Michigan Board of Land Surveyors or by a Decree of a Court of Law; established, re-established, monumented, re-monumented, recovered, found as expressed below:

NOTE: Not more than 4 corners, all in the same town and range, may be recorded on this certificate.

A. Description of original monument and accessories and/or subsequent restoration:

Table with 4 columns: Date, Description, Surveyor, Monument Type. Includes entries for 1831, 1968, 1973, 1981, 1994.



This corner was originally approved by the Kent County Remonumentation Peer Group and monumented by Jonker Land Surveys on 12/11/81 and was recorded per L.C.R.C. #2589.

B. Description of corner evidence found and/or method applied in restoring or reestablishing corner:

I-2 Found a Standard Kent County Monument on the C/L of Honey Creek Avenue (bit.) running North and South on line of a tree row running East and 15'± North of a tree row running West per L.C.R.C.'s #2589 and #8067 as set by Rob Jonker in place of a "T" iron he found which checked L.C.R.C. #531 and the K.C. Surveyor's records.

L.C.R.C. #2589

L.C.R.C. #8067

Remon. tag on SE side 8" Pine S 27° W 72.39'
Remon. tag on S side 5" Hickory S 86° W 38.5'
Remon. tag on W side 6" Pine S 40° E 40.54'

K.C. remon tag & nail in SE side 10" Pine S 27° W 72.24' (m. 72.26')
K.C. remon tag & nail in S side 10" Hickory S 86° W 38.65'
K.C. remon tag & nail in NE side 8" Hickory N 48° W 40.93'
K.C. remon tag & nail in SW side 8" Pine S 40° E 40.65'

The selected location is accepted by me and is generally accepted by professional surveyors as the best available evidence of the position of the original corner.

C. Description of monument for corner and accessories established to perpetuate locating the position of the corner:

I-2 Standard Kent County Monument

- Nail & K.C. remon. tag on SE side 10" Pine S 27° W 72.26'
Nail & K.C. remon. tag on S side 10" Hickory S 86° W 38.65'
Nail & K.C. remon. tag on NE side 8" Hickory N 48° W 40.93'
Nail & K.C. remon. tag on SW side 8" Pine S 40° E 40.65'

Signed by Randy J. Kolehouse Date 8-1-97
EARTH TECH

Surveyor's Michigan License No. 25854

