

MAR 03 1998

**SECTION**

**LAND CORNER RECORDATION CERTIFICATE**  
**Filing Requirement of Act 74, Mich. P.A. 1970**  
**KENT COUNTY REMONUMENTATION**

For corners in

Kent (County)	Located in: Ada Township	Corner Code #
1. Public Land Survey	T <u>7N</u> R <u>10W</u>	<u>I-6</u>
	T _____ R _____	_____
	T _____ R _____	_____
	T _____ R _____	_____
2. Property Controlling in Section	S _____ T _____ R _____	_____
	S _____ T _____ R _____	_____
3. Miscellaneous Property in Sec.	S _____ T _____ R _____	_____
	S _____ T _____ R _____	_____

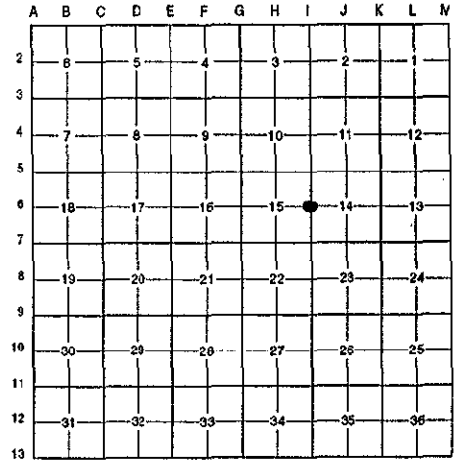
STATE OF MICHIGAN  
 COUNTY OF KENT  
 RECEIVED FOR RECORD  
 97 OCT 15 AM 8:51  
 REG. OF DEEDS  
*Lucy Bond*

**10217**

Register of Deeds Stamp & File Number

4. Lot No. \_\_\_\_\_, Recorded Plat \_\_\_\_\_  
 5. Private Claims \_\_\_\_\_

I, Randy Kolehouse, in a field survey on May 29 19 97, do hereby certify that under requirements of P.A. 74 Michigan P.A. of 1970, the corner points mentioned in lines 1 and 2 above were in conformance with regulations and rules therefore as required in the current manual of survey instructions of the United States Department of the interior, Bureau of Land Management or by a decree of a Court of Law and/or that the corner points mentioned in lines 3, 4 and 5 above were in conformance with the rules of the Michigan Board of Land Surveyors or by a Decree of a Court of Law; established, re-established, monumented, re-monumented, recovered, found as expressed below:



**NOTE: Not more than 4 corners, all in the same town and range, may be recorded on this certificate.**

**A. Description of original monument and accessories and/or subsequent restoration:**

I-6	1831	G.L.O. Notes	Mullett	Set Post	P.A. 345 1990 KENT COUNTY
	N/A	Witness Map	K.C. Surveyor	Boat Spike	PEER APPROVED <u>6/26/97</u>
	1973	L.C.R.C. #637	Exxel Engineering	Boat Spike	CHAIRMAN <u>Harry Huber</u>
	1975	L.C.R.C. #796	Moore & Bruggink	Iron	
	1982	L.C.R.C. #3144	Moore & Bruggink	Fnd. Boat Spike / Set K.C. Monument	
	1994	L.C.R.C. #8071	Glaza & Associates	K.C. Monument	

This corner was originally approved by the Kent County Remonumentation Peer Group and monumented by Moore & Bruggink on 6/15/82 and was recorded per L.C.R.C. #3144.

**B. Description of corner evidence found and/or method applied in restoring or reestablishing corner:**

I-6 Found a Standard Kent County Monument in the C/L of Honey Creek Avenue (bit.) running North and South and 32' ± South of a bituminous drive running West per L.C.R.C.'s #3144 and #8071 as set by Moore & Bruggink in place of a boat spike they found which checked L.C.R.C.'s #796, #637 and the K.C. Surveyor's records.

**L.C.R.C. #3144**

- KC Nail & Tag 16" Oak East 38.35'
- KC Nail & Tag 12" Oak S 45° E 47.43'
- KC Nail & Tag 4" Ash S 80° W 37.75'

**L.C.R.C. #8071**

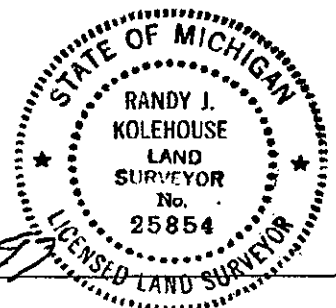
- K.C. remon tag & nail in NW side 36" Oak N 40° E 47.82'
- K.C. remon tag & nail in N side 18" Oak N 90° E 38.32'
- K.C. remon tag & nail in SW side 16" Oak S 45° E 47.32' (m. 47.42')
- K.C. remon tag & nail in S side 10" Ash S 75° W 37.84'

The selected location is accepted by me and is generally accepted by professional surveyors as the best available evidence of the position of the original corner.

**C. Description of monument for corner and accessories established to perpetuate locating the position of the corner:**

I-6 Standard Kent County Monument

- Nail & K.C. remon. tag on NW side 36" Oak N 40° E 47.82'
- Nail & K.C. remon. tag on N side 18" Oak N 90° E 38.32'
- Nail & K.C. remon. tag on SW side 16" Oak S 45° E 47.42'
- Nail & K.C. remon. tag on S side 10" Ash S 75° W 37.84'



Signed by Randy J. Kolehouse Date 8-1-97  
 EASTH TECH

Surveyor's Michigan License No. 25854