

MAR 03 1998

SECTION

LAND CORNER RECORDATION CERTIFICATE
Filing Requirement of Act 74, Mich. P.A. 1970
KENT COUNTY REMONUMENTATION

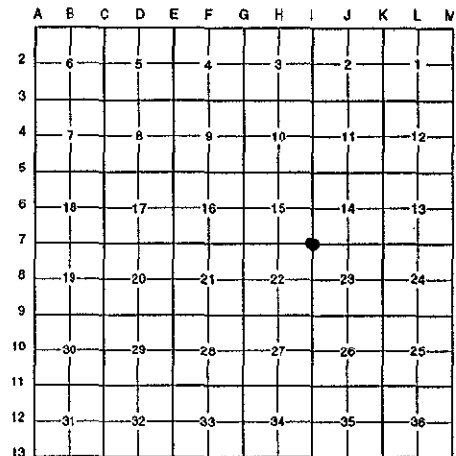
For corners in

Table with columns: Kent (County), Located in: Ada Township, Corner Code #. Rows include Public Land Survey, Property Controlling in Section, and Miscellaneous Property in Sec.

Register of Deeds Stamp & File Number. Includes stamp: REG. OF DEEDS, 10218, 97 OCT 15 AM 8:51, STATE OF MICHIGAN COUNTY OF KENT RECEIVED FOR RECORD.

4. Lot No. , Recorded Plat
5. Private Claims

I, Randy Kolehouse, in a field survey on May 29 19 97, do hereby certify that under requirements of P.A. 74 Michigan P.A. of 1970, the corner points mentioned in lines 1 and 2 above were in conformance with regulations and rules therefore as required in the current manual of survey instructions of the United States Department of the interior, Bureau of Land Management or by a decree of a Court of Law and/or that the corner points mentioned in lines 3, 4 and 5 above were in conformance with the rules of the Michigan Board of Land Surveyors or by a Decree of a Court of Law; established, re-established, monumented, re-monumented, recovered, found as expressed below:



NOTE: Not more than 4 corners, all in the same town and range, may be recorded on this certificate.

Table A: Description of original monument and accessories and/or subsequent restoration. Columns include description, date, and monument type.

P.A. 345 1990 KENT COUNTY PEER APPROVED 6/26/97 CHAIRMAN [Signature]

This corner was originally approved by the Kent County Remonumentation Peer Group and monumented by C. Hay on 12/11/81 and was recorded per L.C.R.C. #2507.

B. Description of corner evidence found and/or method applied in restoring or reestablishing corner:

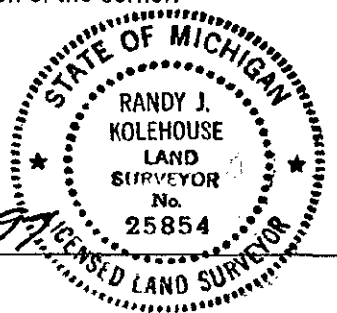
1-7 Found a Standard Kent County Monument in the C/L of Leonard Street (bit.) running West and 1' West of the C/L of Honey Creek Avenue (bit.) running North and South per L.C.R.C.'s #2507 and #8072 as set by C. Hay in place of a boat spike he found over a 3/4" iron which checked L.C.R.C.'s #796, #246 and the K.C. Surveyor's records.

Table with two columns: L.C.R.C. #2507 and L.C.R.C. #8072. Lists remon tags and bearings for each.

The selected location is accepted by me and is generally accepted by professional surveyors as the best available evidence of the position of the original corner.

C. Description of monument for corner and accessories established to perpetuate locating the position of the corner:

- 1-7 Standard Kent County Monument
Nail & K.C. remon. tag on NW side fence post S 50° W 47.66'
Nail & K.C. remon. tag on S side 24 Oak N 90° E 59.83'
Nail & K.C. remon. tag on SE side 26" Oak N 38° E 63.62'
Nail & K.C. remon. tag on N side 10" Pine S 60° E 29.88'



Signed by [Signature] Date 8-1-97

Surveyor's Michigan License No. 25854