

MAR 03 1998

SECTION

LAND CORNER RECORDATION CERTIFICATE
Filing Requirement of Act 74, Mich. P.A. 1970
KENT COUNTY REMONUMENTATION

For corners in

Kent (County)	Located in:	Ada Township	Corner Code #
1. Public Land Survey	T <u>7N</u>	R <u>10W</u>	<u>I-8</u>
	T _____	R _____	_____
	T _____	R _____	_____
	T _____	R _____	_____
2. Property Controlling in Section	S _____	T _____	R _____
	S _____	T _____	R _____
3. Miscellaneous Property in Sec.	S _____	T _____	R _____
	S _____	T _____	R _____

STATE OF MICHIGAN
COUNTY OF KENT
RECORDED FOR RECORD

97 OCT 15 AM 8:51

REG. OF DEEDS
Luci J. Bond

10219

Register of Deeds Stamp & File Number

- 4. Lot No. _____, Recorded Plat _____
- 5. Private Claims _____

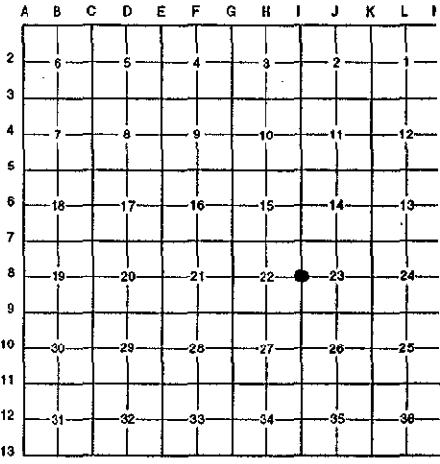
I, Randy Kolehouse, in a field survey on May 28 19 97, do hereby certify that under requirements of P.A. 74 Michigan P.A. of 1970, the corner points mentioned in lines 1 and 2 above were in conformance with regulations and rules therefore as required in the current manual of survey instructions of the United States Department of the interior, Bureau of Land Management or by a decree of a Court of Law and/or that the corner points mentioned in lines 3, 4 and 5 above were in conformance with the rules of the Michigan Board of Land Surveyors or by a Decree of a Court of Law; established, re-established, monumented, re-monumented, recovered, found as expressed below:

NOTE: Not more than 4 corners, all in the same town and range, may be recorded on this certificate.

A. Description of original monument and accessories and/or subsequent restoration:

I-8	1831	G.L.O. Notes	Mullet	Set Post
	N/A	Witness Map	K.C. Surveyor	Stone
	1972	L.C.R.C. #246	Williams & Works	Stone
	1972	L.C.R.C. #349	Williams & Works	1/2" Iron in Mon. Box
	1980	L.C.R.C. #1482	Williams & Works	Fnd. 3/4" Iron in Mon. Box / Set K.C. Monument
	1994	L.C.R.C. #8073	Glaza & Associates	K.C. Monument

P.A. 345 1990 KENT COUNTY
PEER APPROVED 6/26/97
CHAIRMAN Randy Kolehouse



This corner was originally approved by the Kent County Remonumentation Peer Group and monumented by Williams & Works on 11/26/80 and was recorded per L.C.R.C. #1482.

B. Description of corner evidence found and/or method applied in restoring or reestablishing corner:

I-8 Found a Standard Kent County Monument 6.5' East of the C/L intersection of Honey Creek Avenue (bit.) running North and South and Conservation Road running East (bit.) and West (gravel) per L.C.R.C.'s #1482 and #8073 as set by Williams & Works in place of a 3/4" iron they found in a monument box which checked L.C.R.C. #349, #246 and the K.C. Surveyor's records.

L.C.R.C. #1482

L.C.R.C. #8073

Nail & K.C. Remon. Tag NE'ly Side 26" Willow N 60° W 64.90'
Nail & K.C. Remon. Tag SW'ly Side 24" Willow N 26° W 76.73'
Nail & K.C. Remon. Tag NW'ly Side 6" Poplar N 29° E 100.23'
Nail & K.C. Remon. Tag SW'ly Side 6" Cedar S 60° E 75.46'
NE Cor. Conc. Headwall S 05° E 94.12'
NW Cor. Conc. Headwall S 15° W 96.06'

Nail & K.C. remon tag in NE'ly side 26" Willow N 60° W 64.90' (m. 64.85')
Nail & K.C. remon tag in SW'ly side 24" Willow N 26° W 76.73'
NW'ly side 6" Poplar N 29° E 100.23'
SW'ly side 6" Cedar S 60° E 75.46'
NE corner concrete headwall S 05° E 94.12'
NW corner concrete headwall S 15° W 96.06'

The selected location is accepted by me and is generally accepted by professional surveyors as the best available evidence of the position of the original corner.

C. Description of monument for corner and accessories established to perpetuate locating the position of the corner:

I-8 Standard Kent County Monument

Nail & K.C. remon. tag on NE'ly side 26" Willow N 60° W 64.85'
Nail & K.C. remon. tag on SW'ly side 24" Willow N 26° W 76.73'
Nail & K.C. remon. tag on NW'ly side 8" Poplar N 29° E 110.23'
Nail & K.C. remon. tag on SW'ly side 6" Cedar S 60° E 75.46'
NE corner concrete headwall S 05° E 94.12'
NW corner concrete headwall S 15° W 96.06'



Signed by Randy J. Kolehouse Date 8-1-97

Surveyor's Michigan License No. 25854