

SURVEY & REMONUMENTATION

MAR 03 1998

SECTION

**LAND CORNER RECORDATION CERTIFICATE
Filing Requirement of Act 74, Mich. P.A. 1970
KENT COUNTY REMONUMENTATION**

For corners in

Kent (County)	Located in: Township	Ada	Corner Code #
1. Public Land Survey	T <u>7N</u> R <u>10W</u>		<u>I-9</u>
	T _____ R _____		_____
	T _____ R _____		_____
	T _____ R _____		_____
2. Property Controlling in Section	S _____ T _____ R _____		_____
	S _____ T _____ R _____		_____
3. Miscellaneous Property in Sec.	S _____ T _____ R _____		_____
	S _____ T _____ R _____		_____

STATE OF MICHIGAN
COUNTY OF KENT
RECEIVED FOR RECORD

97 OCT 15 AM 8:51

REG. OF DEEDS

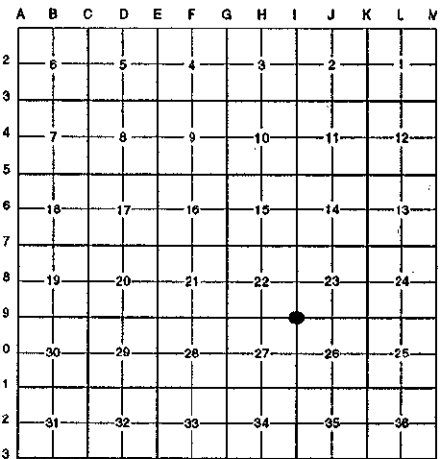
[Signature]

10220

Register of Deeds Stamp & File Number

4. Lot No. _____, Recorded Plat _____
5. Private Claims _____

I, Randy Kolehouse, in a field survey on January 30 19 97, do hereby certify that under requirements of P.A. 74 Michigan P.A. of 1970, the corner points mentioned in lines 1 and 2 above were in conformance with regulations and rules therefore as required in the current manual of survey instructions of the United States Department of the Interior, Bureau of Land Management or by a decree of a Court of Law and/or that the corner points mentioned in lines 3, 4 and 5 above were in conformance with the rules of the Michigan Board of Land Surveyors or by a Decree of a Court of Law; established, re-established, monumented, re-monumented, recovered, found as expressed below:



NOTE: Not more than 4 corners, all in the same town and range, may be recorded on this certificate.

A. Description of original monument and accessories and/or subsequent restoration:

Date	Description	Surveyor	Monument
1831	G.L.O. Notes	Mullett	Set Post
N/A	Witness Map	K.C. Surveyor	Stake & Stone
1973	L.C.R.C. #391	Williams & Works	3/4" Iron
1982	L.C.R.C. #3146	Moore & Bruggink	Fnd. 1/2" Iron / Set K.C. Monument
1994	L.C.R.C. #8074	Glaza & Associates	K.C. Monument

P.A. 345 1990 KENT COUNTY
PEER APPROVED 5/22/97
CHAIRMAN *[Signature]*

This corner was originally approved by the Kent County Remonumentation Peer Group and monumented by Moore & Bruggink on 8/2/82 and was recorded per L.C.R.C. #3146.

B. Description of corner evidence found and/or method applied in restoring or reestablishing corner:

I-9 Found a Standard Kent County Monument 3' ± West of the C/L of Honey Creek Avenue (bit.) running North and South and in bituminous 60' ± North of entrance to Wilderness Trail Pvt. per L.C.R.C.'s #3146 and #8074 as set by Moore & Bruggink in place of a 1/2" iron they found over a 3/4" iron at south base of large stone which checked L.C.R.C. #391 and the K.C. Surveyor's records.

L.C.R.C. #3146

- K.C. Nail & Tag 12" Oak S 20° E 110.13'
- K.C. Nail & Tag 44" Oak S 87° W 28.11'
- K.C. Nail & Tag 26" Oak N 25° W 60.36'
- K.C. Nail & Tag 36" Oak N 45° E 29.51'

L.C.R.C. #8074

- K.C. remon tag & nail in West side 16" Oak S 20° E 110.24'
- K.C. remon tag & nail in South side 44" Oak S 87° W 28.06'
- K.C. remon tag & nail in East side 26" Oak N 25° W 60.36'
- K.C. remon tag & nail in NW'ly side 36" Oak N 45° E 29.51'
- C/L road 3' ± West

The selected location is accepted by me and is generally accepted by professional surveyors as the best available evidence of the position of the original corner.

C. Description of monument for corner and accessories established to perpetuate locating the position of the corner:

I-9 Standard Kent County Monument

- Nail & K.C. remon. tag on W side 16" Oak S 20° E 110.24'
- Nail & K.C. remon. tag on S side 48" Oak S 87° W 28.06'
- Nail & K.C. remon. tag on E side 26" Oak N 25° W 60.36'
- Nail & K.C. remon. tag on NW'ly side 36" Oak N 45° E 29.51'
- Center line road ± 3' West

Signed by *[Signature]* Date 5-1-97
EARTH TECH

Surveyor's Michigan License No. 25854

