

MAR 03 1998

SECTION

LAND CORNER RECORDATION CERTIFICATE
Filing Requirement of Act 74, Mich. P.A. 1970
KENT COUNTY REMONUMENTATION

For corners in

Table with columns: Kent (County), Located in: Ada Township, Corner Code #. Rows include Public Land Survey, Property Controlling in Section, Miscellaneous Property in Sec.

STATE OF MICHIGAN
COUNTY OF KENT
RECEIVED FOR RECORD
97 OCT 15 AM 8:52
REG. OF DEEDS

10225

Register of Deeds Stamp & File Number

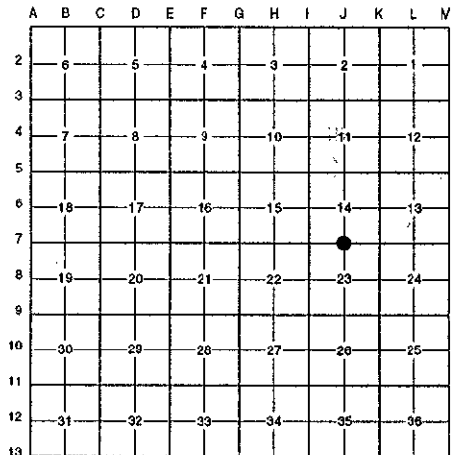
4. Lot No. , Recorded Plat
5. Private Claims

I, Randy Kolehouse, in a field survey on July 10 19 97, do hereby certify that under requirements of P.A. 74 Michigan P.A. of 1970, the corner points mentioned in lines 1 and 2 above were in conformance with regulations and rules therefore as required in the current manual of survey instructions of the United States Department of the Interior, Bureau of Land Management or by a decree of a Court of Law and/or that the corner points mentioned in lines 3, 4 and 5 above were in conformance with the rules of the Michigan Board of Land Surveyors or by a Decree of a Court of Law; established, re-established, monumented, re-monumented, recovered, found as expressed below:

NOTE: Not more than 4 corners, all in the same town and range, may be recorded on this certificate.

A. Description of original monument and accessories and/or subsequent restoration:

Table with columns: Date, Description, Surveyor, Monument Type. Rows include 1831 G.L.O. Notes Mullett Set Post, 1972 L.C.R.C. #349 Williams & Works 4" Conc. Post / Set Square Spike, etc.



This corner was originally approved by the Kent County Remonumentation Peer Group and monumented by Moore & Bruggink on 6/21/82 and was recorded per L.C.R.C. #3145.

B. Description of corner evidence found and/or method applied in restoring or reestablishing corner:

J-7 Found a Standard Kent County Monument on line of a fence line running West and a fence and tree row running North and South per L.C.R.C.'s #3145 and #8081 as set by Moore & Bruggink in place of a square spike they found which checked L.C.R.C. #349 and the K.C. Surveyor's records.

L.C.R.C. #3145

- K.C. Nail & Tag 30" Oak N 03° E 16.03'
K.C. Nail & Tag 10" Oak N 85° W 37.80'
K.C. Nail & Tag 12" Oak S 60° W 40.56'
K.C. Nail & Tag 30" Oak South 14.37'
K.C. Nail & Tag 12" Oak S 70° E 31.23'

L.C.R.C. #8081

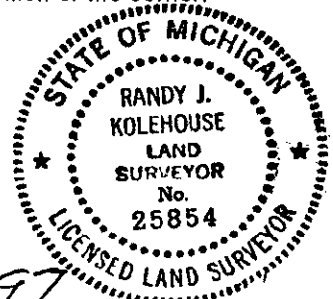
- Nail & K.C. remon tag in W side 36" Oak N 03° E 16.00' (m. 16.01')
Nail & K.C. remon tag in S side 12" Oak N 85° W 37.75'
Nail & K.C. remon tag in N side 14" Oak S 60° W 40.60' (m. 40.55')
Nail & K.C. remon tag in W side 30" Oak South 14.37' (m. 14.36')
Nail & K.C. remon tag in N side 12" Oak S 70° E 31.28' (m. 31.25')

The selected location is accepted by me and is generally accepted by professional surveyors as the best available evidence of the position of the original corner.

C. Description of monument for corner and accessories established to perpetuate locating the position of the corner:

J-7 Standard Kent County Monument

- Nail & K.C. remon. tag on W side 36" Oak N 03° E 16.01'
Nail & K.C. remon. tag on S side 12" Oak N 85° W 37.75'
Nail & K.C. remon. tag on N side 14" Oak S 60° W 40.55'
Nail & K.C. remon. tag on W side 30" Oak South 14.36'
Nail & K.C. remon. tag on N side 12" Oak S 70° E 31.25'



Signed by Randy J. Kolehouse

Date 8-1-97

Surveyor's Michigan License No. 25854

P.A. 345 1990 KENT COUNTY PEER APPROVED 7/29/97 CHAIRMAN Harry Hubert