

APR 14 1998

SECTION

LAND CORNER RECORDATION CERTIFICATE  
Filing Requirement of Act 74, Mich. P.A. 1970

KENT COUNTY REMONUMENTATION

For corners in

<u>Kent</u> (County)	Located in: <u>Ada</u> Township	Corner Code # <u>J-11</u>
1. Public Land Survey	T <u>7N</u> R <u>10W</u>	<u>J-11</u>
	T _____ R _____	_____
	T _____ R _____	_____
	T _____ R _____	_____
2. Property Controlling in Section	S _____ T _____ R _____	_____
	S _____ T _____ R _____	_____
3. Miscellaneous Property in Sec.	S _____ T _____ R _____	_____
	S _____ T _____ R _____	_____
4. Lot No. _____, Recorded Plat _____		
5. Private Claims _____		

STATE OF MICHIGAN  
COUNTY OF KENT  
RECEIVED FOR RECORD

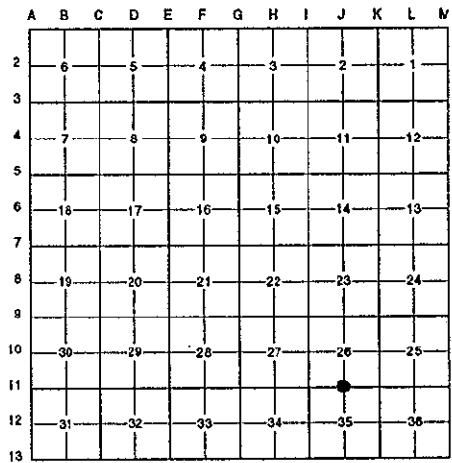
97 OCT 15 AM 8:52

REG. OF DEEDS  
*Luis S. Benda*

10227

Register of Deeds Stamp & File Number

I, Randy Kolehouse, in a field survey on January 30 19 97, do hereby certify that under requirements of P.A. 74 Michigan P.A. of 1970, the corner points mentioned in lines 1 and 2 above were in conformance with regulations and rules therefore as required in the current manual of survey instructions of the United States Department of the interior, Bureau of Land Management or by a decree of a Court of Law and/or that the corner points mentioned in lines 3, 4 and 5 above were in conformance with the rules of the Michigan Board of Land Surveyors or by a Decree of a Court of Law; established, re-established, monumented, re-monumented, recovered, found as expressed below:



NOTE: Not more than 4 corners, all in the same town and range, may be recorded on this certificate.

A. Description of original monument and accessories and/or subsequent restoration:

J-11	1831	G.L.O. Notes	Mullett	Set Post
	1933	Witness Map	K.C. Surveyor	Iron
	1971	L.C.R.C. #60	Williams & Works	1/2" Iron
	1982	L.C.R.C. #3143	Moore & Bruggink	Fnd. 1/2" Iron / Set K.C. Monument
	1994	L.C.R.C. #8083	Glaza & Associates	K.C. Monument

This corner was originally approved by the Kent County Remonumentation Peer Group and monumented by Moore & Bruggink on 8/30/82 and was recorded per L.C.R.C. #3143.

B. Description of corner evidence found and/or method applied in restoring or reestablishing corner:

J-11 Found a Standard Kent County Monument at the C/L of Vergennes Street (bit.) running East and West on line of a fence line running North per L.C.R.C.'s #3143 and #8083 as set by Moore & Bruggink in place of a 1/2" iron they found over a 1" iron which checked L.C.R.C. #60 and the K.C. Surveyor's records.

L.C.R.C. #3143

L.C.R.C. #8083

- K.C. Nail & Tag 15" Pine S 45° W 40.65'
- K.C. Nail & Tag 18" Oak N 05° E 40.77'
- K.C. Nail & Tag 15" Pine N 65° E 49.06'
- K.C. Nail & Tag 12" Oak S 05° EW 51.20'

- K.C. Tag & Nail in 18" Pine S 45° W 40.65' (m. 40.64')
- K.C. Tag & Nail in 14" Oak N 05° E 40.77' (m. 49.05')
- K.C. Tag & Nail in 18" Pine N 65° E 49.06'
- K.C. Tag & Nail in 14" Oak S 05° W 50.70'
- On center line bit. road

The selected location is accepted by me and is generally accepted by professional surveyors as the best available evidence of the position of the original corner.

C. Description of monument for corner and accessories established to perpetuate locating the position of the corner:

- J-11 Standard Kent County Monument
- Nail & K.C. remon. tag on 18" Pine S 45° W 40.64'
  - Nail & K.C. remon. tag on 14" Oak N 05° E 40.77'
  - Nail & K.C. remon. tag on 18" Pine N 65° E 49.05'
  - Nail & K.C. remon. tag on 14" Oak S 05° W 50.70'

P.A. 345 1990 KENT COUNTY  
PEER APPROVED 5/22/97  
CHAIRMAN *Randy Kolehouse*



Signed by *Randy J. Kolehouse*  
EARTH TECH

Date 8-1-97

Surveyor's Michigan License No. 25854