

# SURVEY & REMONUMENTATION

MAR 03 1998

## LAND CORNER RECORDATION CERTIFICATE Filing Requirement of Act 74, Mich. P.A. 1970 KENT COUNTY REMONUMENTATION

For corners in

**SECTION**

Kent	Located in:	Ada	Corner Code #
(County)	Township		
1. Public Land Survey	T <u>7N</u>	R <u>10W</u>	<u>K-2</u>
	T _____	R _____	_____
	T _____	R _____	_____
	T _____	R _____	_____
2. Property Controlling in Section	S _____	T _____	R _____
	S _____	T _____	R _____
3. Miscellaneous Property in Sec.	S _____	T _____	R _____
	S _____	T _____	R _____

10229

Register of Deeds Stamp & File Number

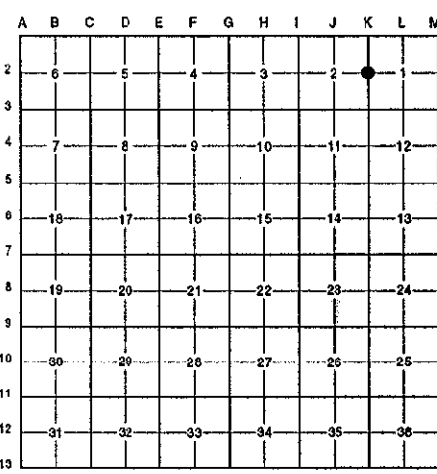
STATE OF MICHIGAN  
COUNTY OF KENT  
RECEIVED FOR RECORD

97 OCT 15 AM 8:52

REG. OF DEEDS

*Eric Standa*

4. Lot No. \_\_\_\_\_, Recorded Plat \_\_\_\_\_  
5. Private Claims \_\_\_\_\_



I, Randy Kolehouse, in a field survey on April 11 19 97, do hereby certify that under requirements of P.A. 74 Michigan P.A. of 1970, the corner points mentioned in lines 1 and 2 above were in conformance with regulations and rules therefore as required in the current manual of survey instructions of the United States Department of the Interior, Bureau of Land Management or by a decree of a Court of Law and/or that the corner points mentioned in lines 3, 4 and 5 above were in conformance with the rules of the Michigan Board of Land Surveyors or by a Decree of a Court of Law; established, re-established, monumented, re-monumented, recovered, found as expressed below:

**NOTE: Not more than 4 corners, all in the same town and range, may be recorded on this certificate.**

**A. Description of original monument and accessories and/or subsequent restoration:**

K-2	1831 G.L.O. Notes	Mullett	Set Post
	1968 Witness Map	K.C. Surveyor	Iron & Stones
	1973 L.C.R.C. #532	Exxel Engineering	1" Iron
	1981 L.C.R.C. #2595	Jonker Land Surveys	Fnd. 1" Iron / Set K.C. Monument
	1994 L.C.R.C. #8085	Glaza & Associates	K.C. Monument

P.A. 345 1990 KENT COUNTY  
PEER APPROVED 5/22/97  
CHAIRMAN Harry Huber

This corner was originally approved by the Kent County Remonumentation Peer Group and monumented by Rob Jonker on 12/15/81 and was recorded per L.C.R.C. #2595.

**B. Description of corner evidence found and/or method applied in restoring or reestablishing corner:**

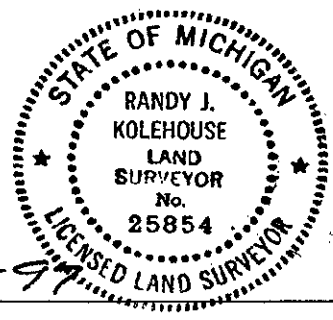
K-2 Found a Standard Kent County Monument (missing cap) at the C/L of Giles Avenue (gravel) running North and South on line of a fence line running East per L.C.R.C.'s #2595 and #8085 as set by Rob Jonker in place of a 1" iron he found which checked L.C.R.C. #532 and the K.C. Surveyor's records.

L.C.R.C. #2595	L.C.R.C. #8085
Remon. tag on W side Tw. 10" Ash S 27° E 39.85'	K.C. remon tag & nail in W side 10" Twin Ash S 27° E 39.90'
Remon. tag on NW side 18" Ash S 29° W 50.86'	K.C. remon tag & nail in NE side 20" Ash S 29° W 50.05'
Remon. tag on S side 9" Oak S 65° W 32.68'	K.C. remon tag & nail in S side 12" Oak S 65° W 32.72'
Remon. tag on S side 9" Ash N 62° W 27.76'	K.C. remon tag & nail in S side 12" Ash N 62° W 27.58'

The selected location is accepted by me and is generally accepted by professional surveyors as the best available evidence of the position of the original corner.

**C. Description of monument for corner and accessories established to perpetuate locating the position of the corner:**

- K-2 Replaced Cap on Standard Kent County Monument
- Nail & K.C. remon. tag on W side 10" Twin Ash S 27° E 39.90'
  - Nail & K.C. remon. tag on NE side 20" Ash S 29° W 50.05'
  - Nail & K.C. remon. tag on S side 12" Oak S 65° W 32.72'
  - Nail & K.C. remon. tag on S side 12" Ash N 62° W 27.58'



Signed by *Randy J. Kolehouse* Date 8-1-97  
EARTH TECH

Surveyor's Michigan License No. 25854